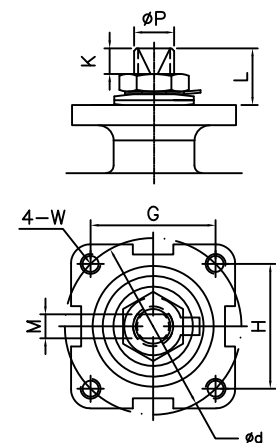
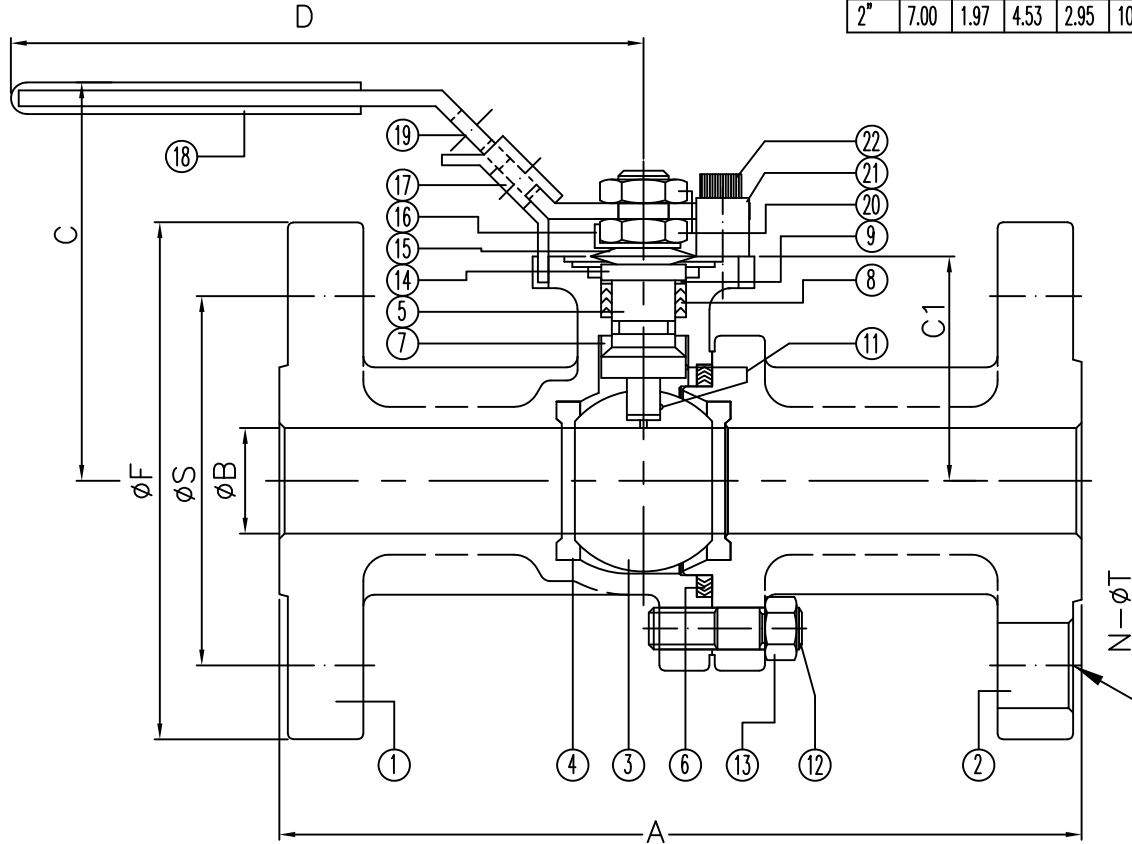


F150 Series	Class 150	WCB	TFM Seat
FIRE SAFE API 607-7			Size 1/2"-2"

DS-F150-CS-F-G-G-N-L

Size	A	B	C	C1	D	F	N	S	T	d	G	H	K	L	M	P	W	ISO
1/2"	4.25	0.59	2.60	1.54	6.50	3.50	4	2.38	0.62	1.65	1.17	1.17	0.31	0.55	0.250	0.37	#10-24UNC	F04
3/4"	4.62	0.79	2.91	1.67	6.50	3.88	4	2.75	0.62	1.65	1.17	1.17	0.31	0.55	0.250	0.37	#10-24UNC	F04
1"	5.00	0.98	3.43	2.06	7.87	4.25	4	3.12	0.62	1.97	1.39	1.39	0.43	0.75	0.315	0.43	1/4-20UNC	F05
1 1/4"	5.50	1.26	3.62	2.20	7.87	4.62	4	3.50	0.62	1.97	1.39	1.39	0.43	0.75	0.315	0.43	1/4-20UNC	F05
1 1/2"	6.50	1.50	4.13	2.65	9.84	5.00	4	3.88	0.62	2.76	1.95	1.95	0.55	0.91	0.374	0.62	5/16-18UNC	F07
2"	7.00	1.97	4.53	2.95	10.4	6.00	4	4.75	0.75	2.76	1.95	1.95	0.55	0.91	0.374	0.62	5/16-18UNC	F07



No.	Name	Carbon Steel
1	Body	ASTM A216 WCB
2	Cap	ASTM A216 WCB
3	Ball	ASTM A351 CF8M
4	Seat	TFM
5	Stern	SS316
6	Gasket	SWG SS316/Graphite
7	Thrust Washer	25%Carbon+TFM
8	Stern Packing	Graphite
9	Packing Protector	50%PTFE+SS316
10		
11	Anti-Static	SS316
12	Body Stud	ASTM A193 B7
13	Body Nut	ASTM A194 2H
14	Packing Follower	SS304
15	Belleville Washer	SS301
16	Lock Washer	SS304
17	Locking Device	SS304
18	Handle Sleeve	Plastic
19	Handle	SS304
20	Thin Nut	SS304
21	Valve Stop	SS304
22	Stop Bolt	SS304

ANSI RATING CLASS 150

SEAT TEST @ 80~100 PSI	ASME B16.34
SHELL TEST @ 450 PSI	ASME B16.34
PRESSURE TEMPERATURE RATING	ASME B16.34
FACE TO FACE DIMENSION	ASME B16.10
END CONNECTION	ASME B16.5
JOINT STRENGTH	ASME B16.34
WALL THICKNESS	ASME B16.34
BASIC DESIGN	ASME B16.34

For certified drawing, consult factory

Drawn by:	Date:	Scale: NTS	Rev: 0
Checked by:	Date:	Unit: inch	Sheet: xxx
Approved by:	Date:	Material: See Notes	

Drawing Title:	Flange Ball Valve Class 150 1/2"-2"
Drawing No.:	DS-F150CSFGGN-L-01-HC



4815 W. 5th Street  
Lumberton, NC 28358  
Website: www.flotite.com  
Tel: 910-738-8904  
Fax: 910-738-9112  
E-mail: flotite@flotite.com

REVIEW ALL STANDARD SOFT PARTS FOR APPLICATION COMPATIBILITY