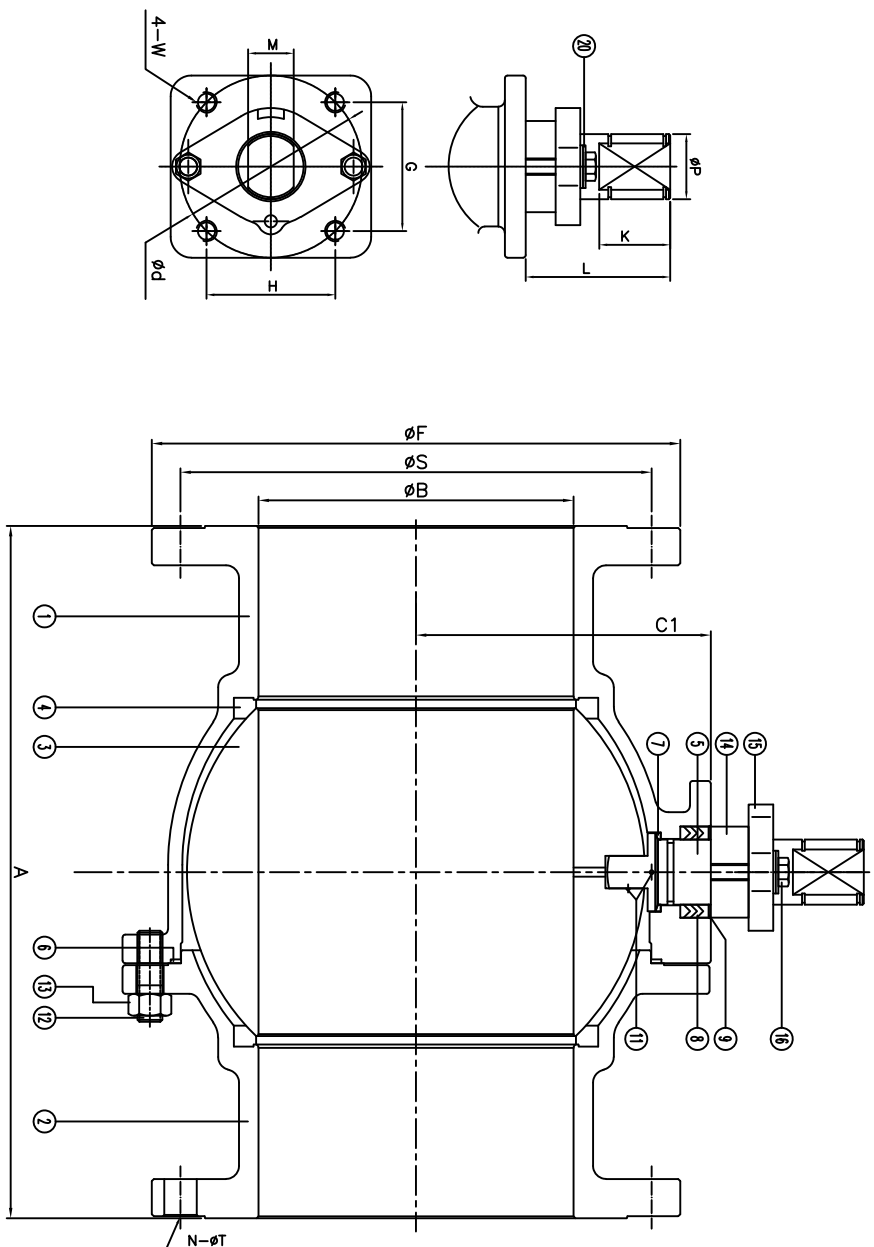


F150 Series	Class 150	WCB	TFM Seat
FIRE SAFE API 607-7		Size 10"-12"	

DS-F150-CS-F-G-G-N-N-YM



Size	A	B	C	C1	D	F	N	S	T	d	G	H	K	L	M	P	W	ISO
10"	21.0	9.84		10.91		16.0	12	14.25	1.00	5.51	3.897	3.897	2.28	3.66	1.378	1.97	5/8-11unc	F14
12"	24.0	11.8		12.66		19.0	12	17.0	1.00	5.51	3.897	3.897	2.12	3.66	1.378	1.97	5/8-11unc	F14

ANSI RATING CLASS 150	ASME B16.34
SEAT TEST @ 80-100 PSI	ASME B16.34
SHELL TEST @ 450 PSI	ASME B16.34
PRESSURE TEMPERATURE RATING	ASME B16.34
FACE TO FACE DIMENSION	ASME B16.10
END CONNECTION	ASME B16.5
JOINT STRENGTH	ASME B16.34
WALL THICKNESS	ASME B16.34
BASIC DESIGN	ASME B16.34

No.	Name	Material
1	Body	Carbon Steel
2	Cap	ASTM A216 WCB
3	Ball	ASTM A351 CF8
4	Seat	TFM
5	Stem	17-4PH
6	Gasket	SMC SSS304/Graphite
7	Thrust Washer	25%Carbon+TFM
8	Stem Packing	Graphite
9		
10		
11	Anti-Static	SS304
12	Body Stud	ASTM A193 B7M
13	Body Nut	ASTM A194 2HM
14	Packing Follower	SS304
15	Packing Gland	ASTM A216 WCB
16	Gland Bolt	Steel
17		
18		
19		
20	Belleville Washer	Steel

For certified drawing, consult factory

Drawn by: _____ Date: _____ Scale: NTS Rev: 0 Drawing Title: Flange Ball Valve Class 150 10" - 12" Bare Stem

Checked by: _____ Date: _____ Unit: inch Sheet: xxx Drawing No.: DS-F150CSFGGN-N-04-YM

Approved by: _____ Date: _____ Material: See Notes



4815 W. 5th Street
Lumberton, NC 28358
Website: www.flo-tite.com

Tel: 910-738-8904
Fax: 910-738-9112
E-mail: lholte@flo-tite.com

REVIEW ALL STANDARD SOFT PARTS FOR APPLICATION COMPATIBILITY