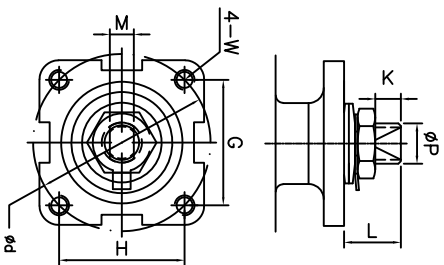
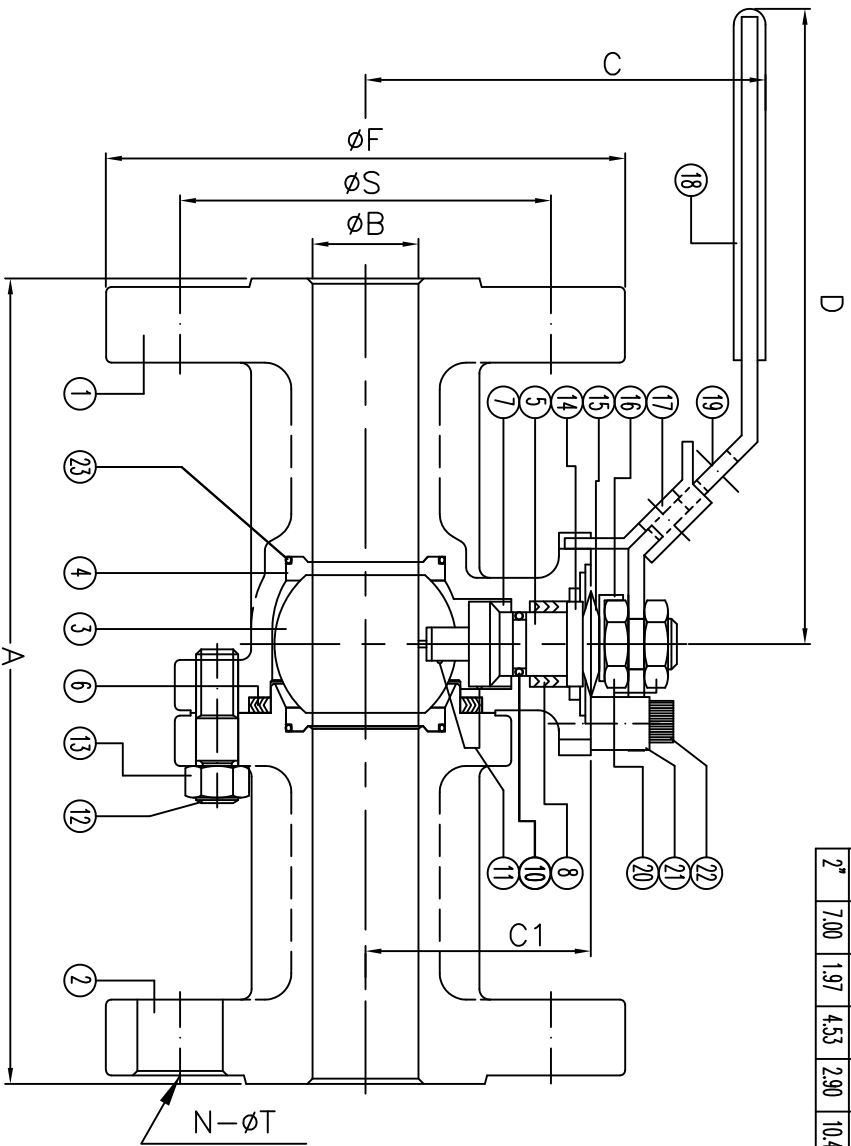


Size	A	B	C	C1	D	F	N	S	T	d	G	H	K	L	M	P	W	ISO
1/2"	4.25	0.59	2.60	1.54	6.50	3.50	4	2.38	0.62	1.65	1.17	1.17	0.31	0.47	0.250	0.37	#10-24UNC	F04
3/4"	4.62	0.79	2.91	1.70	6.50	3.88	4	2.75	0.62	1.65	1.17	1.17	0.31	0.63	0.250	0.37	#10-24UNC	F04
1"	5.00	0.98	3.43	2.06	7.87	4.25	4	3.12	0.62	1.97	1.39	1.39	0.43	0.83	0.315	0.43	1/4-20UNC	F05
1 1/4	5.50	1.26	3.62	2.35	7.87	4.62	4	3.50	0.62	1.97	1.39	1.39	0.43	0.75	0.315	0.43	1/4-20UNC	F05
1 1/2	6.50	1.50	4.13	2.65	9.84	5.00	4	3.88	0.62	2.76	1.95	1.95	0.55	1.02	0.374	0.62	5/16-18UNC	F07
2"	7.00	1.97	4.53	2.90	10.4	6.00	4	4.75	0.75	2.76	1.95	1.95	0.55	0.97	0.374	0.62	5/16-18UNC	F07



ANSI RATING CLASS 150			
SEAT TEST @ 80~100 PSI	ASME B16.34	17	Locking Device
SHELL TEST @ 450 PSI	ASME B16.34	18	Handle Sleeve
PRESSURE TEMPERATURE RATING	ASME B16.34	19	Handle
FACE TO FACE DIMENSION	ASME B16.10	20	Thin Nut
END CONNECTION	ASME B16.5	21	Valve Stop
JOINT STRENGTH	ASME B16.34	22	Stop Bolt
WALL THICKNESS	ASME B16.34	23	Seat O-Ring
BASIC DESIGN	ASME B16.34		

For certified drawing, consult factory

Drawn by:	Date:	Scale: NTS	Rev: 0	Drawing Title: Flange Ball Valve Class 150 1/2"-2"
Checked by:	Date:	Unit: inch	Sheet: xxx	Drawing No.: DS-F150CSFGV-L-01-YM
Approved by:	Date:	Mdtrndi: See Notes		



4815 W. 5th Street
Lumberton, NC 28358
Websterwww.flo-tite.com
E-mail: flo-tite@flo-tite.com

Tel: 910-739-9904
Fax: 910-739-9112

REVIEW ALL STANDARD SOFT PARTS FOR APPLICATION COMPATIBILITY