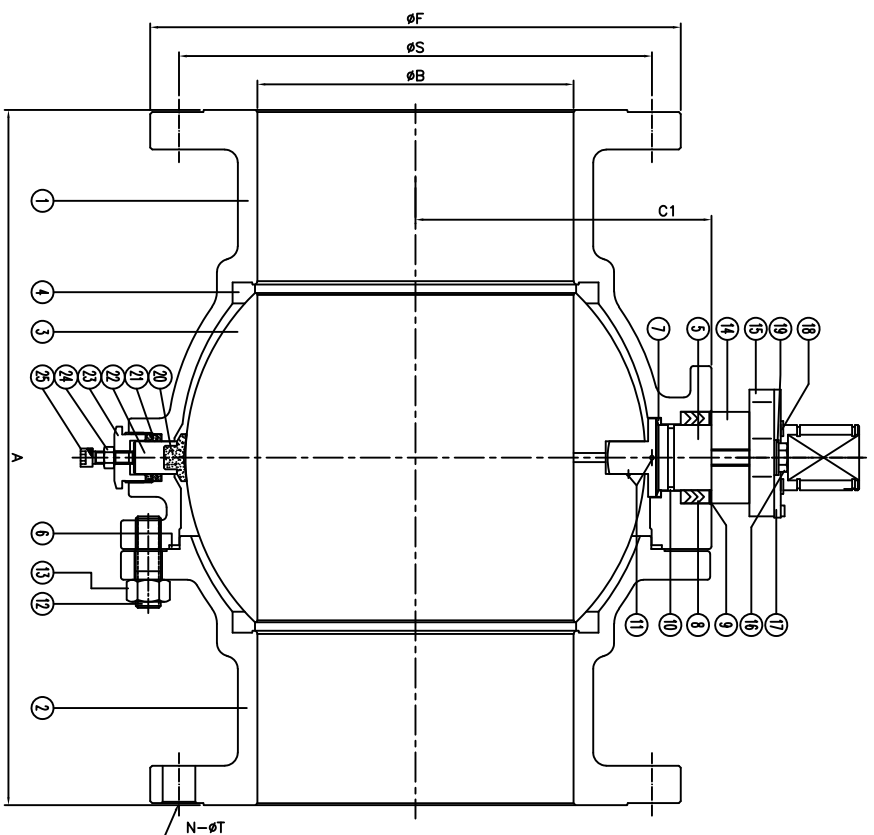
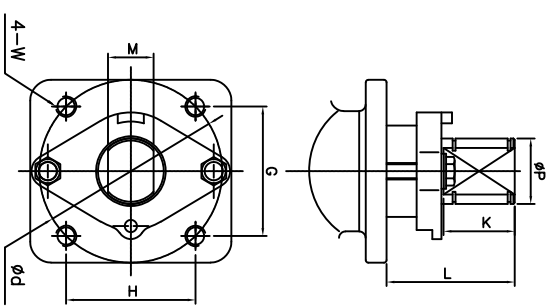


F150 Series	Class 150	WCB	TFM Seat
FIRE SAFE API 607-7			Size 10"-12"

DS-F150-CS-F-G-G-V-N-HC



Size	A	B	C1	F	N	S	T	d	G	H	K	L	M	P	W	ISO
10"	21.0	9.84	9.88	16.0	12	14.25	1.00	5.51	3.897	3.897	2.12	3.86	1.378	1.97	5/8-11unc	F14
12"	24.0	11.8	11.5	19.0	12	17.0	1.00	5.51	3.897	3.897	2.12	3.86	1.378	1.97	5/8-11unc	F14

For certified drawing, consult factory

Drawn by:	Date:	Scale: NTS	Rev: 0
Checked by:	Date:	Unit: inch	Sheet: xxx
Approved by:	Date:	Material: See Notes	

Drawing Title:	Flange Ball Valve Class 150 10" - 12" Bare Stem
Drawing No.:	DS-F150CSFGV-N-04-HC

ANSI RATING CLASS 150	ASME B16.34
SEAT TEST @ 80-100 PSI	ASME B16.34
SHELL TEST @ 450 PSI	ASME B16.34
PRESSURE TEMPERATURE RATING	ASME B16.10
FACE TO FACE DIMENSION	ASME B16.5
END CONNECTION	ASME B16.34
JOINT STRENGTH	ASME B16.34
WALL THICKNESS	ASME B16.34
BASIC DESIGN	ASME B16.34

No.	Name	Carbon Steel
1	Body	ASTM A216 WCB
2	Cap	ASTM A216 WCB
3	Ball	ASTM A351 CF8M
4	Seat	TFM
5	Stem	SS316
6	Gasket	SiMC SS316/Graphite
7	Thrust Washer	25%Carbon+TFM
8	Stem Packing	Graphite
9	Packing Protector	50%PTFE+SS316
10	O-Ring	Viton
11	Anti-Static	SS316
12	Body Stud	ASTM A193 B7
13	Body Nut	ASTM A194 2H
14	Packing Follower	Steel
15	Packing Gland	17-4Ph
16	Gland Bolt	Steel
17	Trawl Stopper	Steel
18	Snop Ring	Plated Steel
19	Bellville Washer	SS301
20	Pin Seat	PTFE
21	Pin Packing	Graphite
22	Support Pin	SS316
23	Support Nut	SS304
24	Set Nut	SS304
25	Tuning Screw	SS304

REVIEW ALL STANDARD SOFT PARTS FOR APPLICATION COMPATIBILITY



4815 W. 5th Street
Lumberton, NC 28358
Website: www.flo-tite.com

Tel: 910-238-8904
Fax: 910-238-9112
E-mail: hotline@flo-tite.com