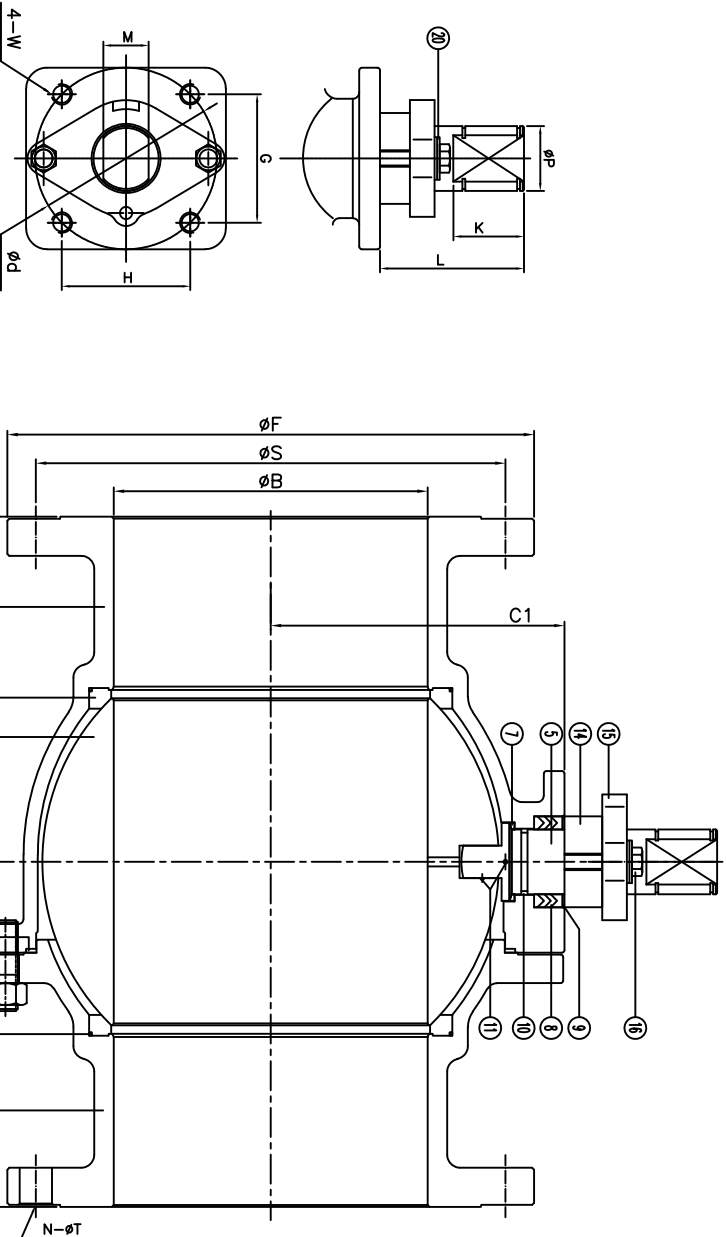


F150 Series	Class 150	WCB	TFM Seat
FIRE SAFE API 607-7			Size 10"-12"

DS-F150-CS-F-G-G-V-N-YM



Size	A	B	C	C1	D	F	N	S	T	d	G	H	K	L	M	P	W	ISO
10"	21.0	9.84		10.91		16.0	12	14.25	1.00	5.51	3.897	3.897	2.28	3.86	1.378	1.97	5/8-11unc	F14
12"	24.0	11.8		12.66		19.0	12	17.0	1.00	5.51	3.897	3.897	2.12	3.86	1.378	1.97	5/8-11unc	F14

For certified drawing, consult factory

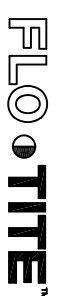
Drawn by:	Date:	Scale: NTS	Rev: 0
Checked by:	Date:	Unit: Inch	Sheet: xxx
Approved by:	Date:	Material: See Notes	

Drawing Title:	Flange Ball Valve Class 150 10" - 12" Bare Stem
Drawing No.:	DS-F150CSFGCV-N-04-YM

ANSI RATING CLASS 150	
SEAT TEST @ 450 PSI	ASME B16.34
SHELL TEST @ 450 PSI	ASME B16.34
PRESSURE TEMPERATURE RATING	ASME B16.34
FACE TO FACE DIMENSION	ASME B16.10
END CONNECTION	ASME B16.5
JOINT STRENGTH	ASME B16.34
WALL THICKNESS	ASME B16.34
BASIC DESIGN	ASME B16.34

No.	Name	Material
1	Body	Carbon Steel
2	Cop	ASTM A216 WCB
3	Ball	ASTM A351 CF8
4	Seat	TFM
5	Stem	17-4PH
6	Gasket	SWC SS304/graphite
7	Thrust Washer	25%Carbon+TFM
8	Stem Packing	Graphite
9		
10	O-Ring	Viton
11	Anti-Static	SS304
12	Body Stud	ASTM A193 B7M
13	Body Nut	ASTM A194 2HM
14	Packing Follower	SS304
15	Packing Gland	ASTM A216 WCB
16	Gland Bolt	Steel
17		
18		
19	Seat O-Ring	Viton
20	Belleville Washer	Steel

REVIEW ALL STANDARD SOFT PARTS FOR APPLICATION COMPATIBILITY



4815 W. 5th Street
Lumberton, NC 28358
Website: www.flo-tite.com
Tel: 910-738-8904
Fax: 910-738-9112
E-Mail: flo@flo-tite.com