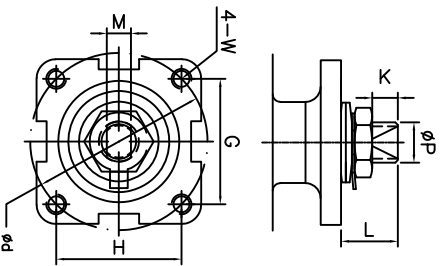
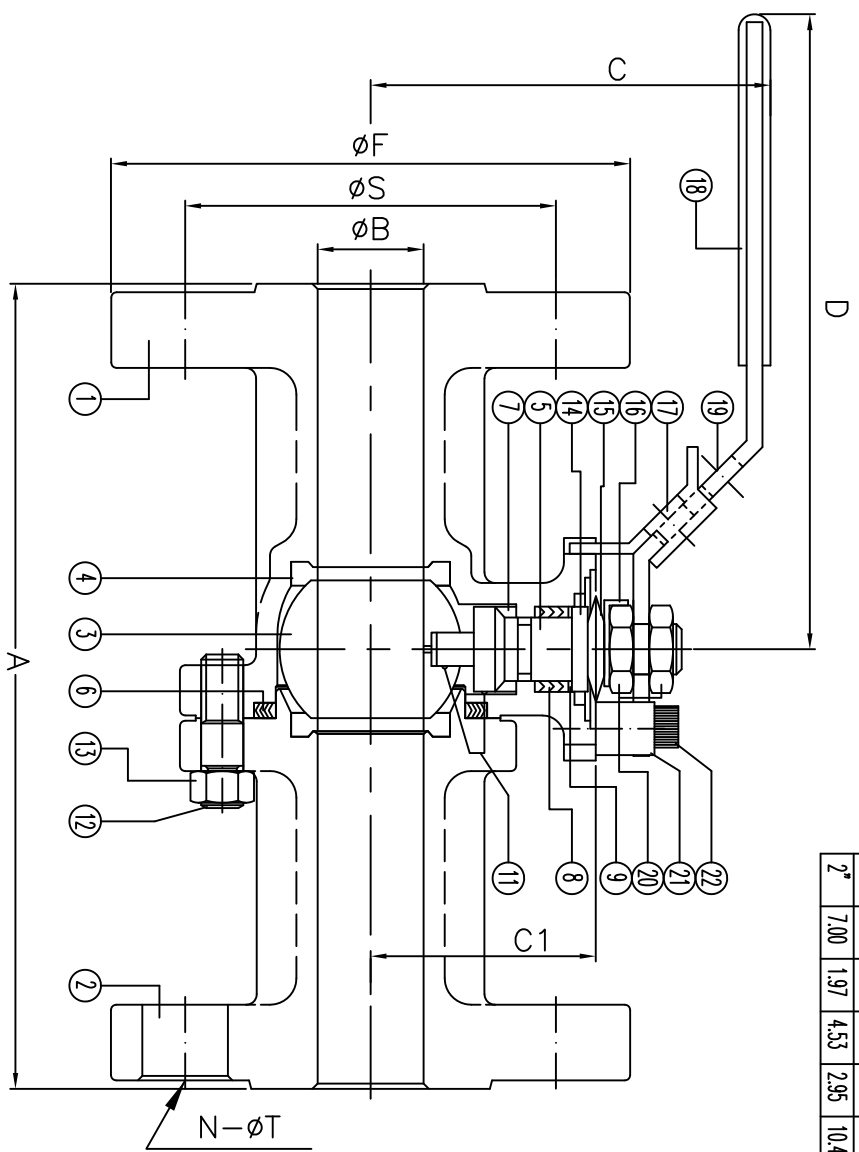


Size	A	B	C	C1	D	F	N	S	T	d	G	H	K	L	M	P	W	ISO
1/2"	4.25	0.59	2.60	1.54	6.50	3.50	4	2.38	0.62	1.65	1.17	1.17	0.31	0.55	0.250	0.37	#10-24UNC	F04
3/4"	4.62	0.79	2.91	1.67	6.50	3.88	4	2.75	0.62	1.65	1.17	1.17	0.31	0.55	0.250	0.37	#10-24UNC	F04
1"	5.00	0.98	3.43	2.06	7.87	4.25	4	3.12	0.62	1.97	1.39	1.39	0.43	0.75	0.315	0.43	1/4-20UNC	F05
1 1/4"	5.50	1.26	3.62	2.20	7.87	4.62	4	3.50	0.62	1.97	1.39	1.39	0.43	0.75	0.315	0.43	1/4-20UNC	F05
1 1/2"	6.50	1.50	4.13	2.65	9.84	5.00	4	3.88	0.62	2.76	1.95	1.95	0.55	0.91	0.374	0.62	5/16-18UNC	F07
2"	7.00	1.97	4.53	2.95	10.4	6.00	4	4.75	0.75	2.76	1.95	1.95	0.55	0.91	0.374	0.62	5/16-18UNC	F07



ANSI RATING CLASS 150

SEAT TEST @ 80~100 PSI	ASME B16.34	17	Locking Device	SS304
SHELL TEST @ 425 PSI	ASME B16.34	18	Handle Sleeve	Plastic
PRESSURE TEMPERATURE RATING	ASME B16.34	19	Handle	SS304
FACE TO FACE DIMENSION	ASME B16.10	20	Thin Nut	SS304
END CONNECTION	ASME B16.5	21	Valve Stop	SS304
JOINT STRENGTH	ASME B16.34	22	Stop Bolt	SS304
WALL THICKNESS	ASME B16.34			
BASIC DESIGN	ASME B16.34			

For certified drawing, consult factory

Drawn by:	Date:	Scale: NTS	Rev: 0	Drawing Title: Flange Bolt Valve Class 150 1/2"-2"
Checked by:	Date:	Unit: inch	Sheet: xxx	Drawing No.: DS-F150SSFFG-N-L-01-HC
Approved by:	Date:	Material: See Notes		



4815 W. 5th Street
 Lumberton, NC 28358
 Website: www.flottite.com
 E-mail: flottite@flottite.com

REVIEW ALL STANDARD SOFT PARTS FOR APPLICATION COMPATIBILITY

Tel: 910-726-9904
 Fax: 910-726-9112