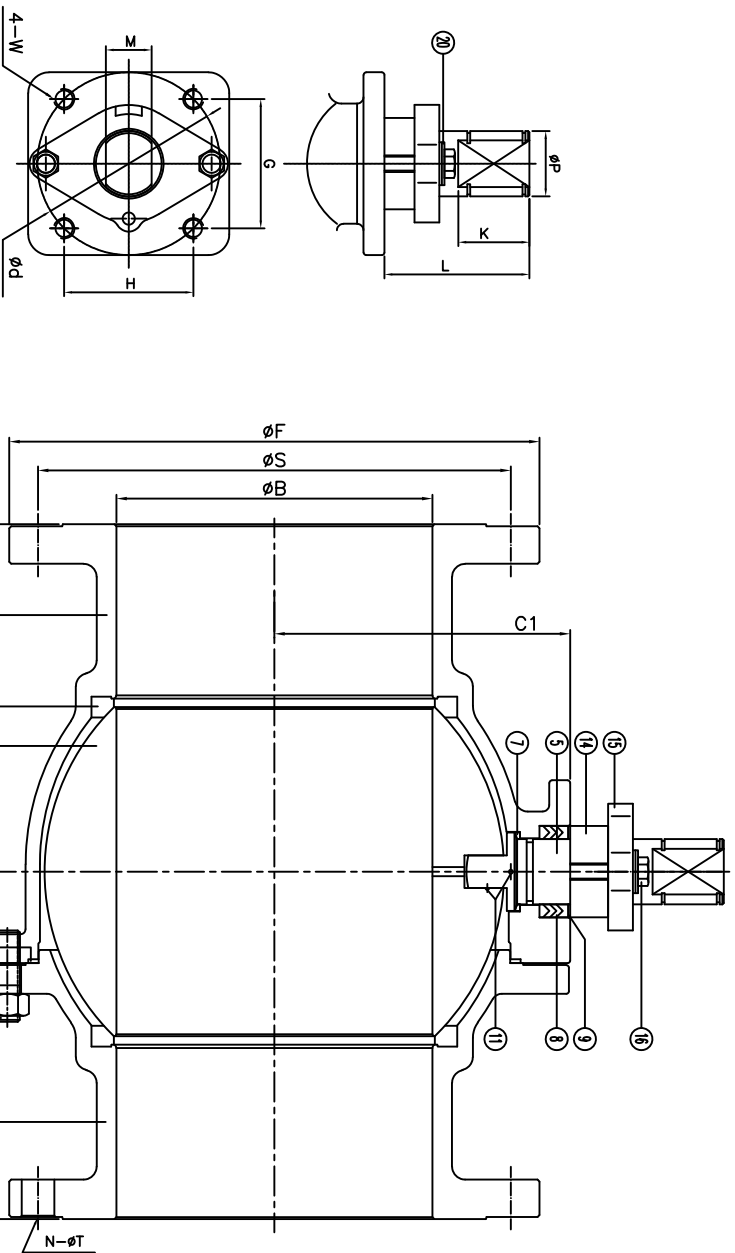


F150 Series	Class 150	CF8M	TFM Seat
FIRE SAFE API 607-7			Size 10"-12"

DS-F150-SS-F-G-G-N-N-YM



Size	A	B	C	C1	D	F	N	S	T	d	G	H	K	L	M	P	W	ISO
10"	21.0	9.84		10.91		16.0	12	14.25	1.00	5.51	3.897	3.897	2.28	3.86	1.378	1.97	5/8-11unc	F14
12"	24.0	11.8		12.66		19.0	12	17.0	1.00	5.51	3.897	3.897	2.12	3.86	1.378	1.97	5/8-11unc	F14

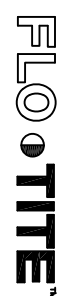
For certified drawing, consult factory

Drawn by:	Date:	Scale: NTS	Rev: 0	Drawing Title: Flange Ball Valve Class 150 10" - 12" Bore Stem
Checked by:	Date:	Unit: Inch	Sheet: xxx	Drawing No.: DS-F150SSFGGN-N-04-YM
Approved by:	Date:	Material: See Notes		

ANSI RATING CLASS 150	
SEAT TEST @ 80-100 PSI	ASME B16.34
SHELL TEST @ 425 PSI	ASME B16.34
PRESSURE TEMPERATURE RATING	ASME B16.34
FACE TO FACE DIMENSION	ASME B16.10
END CONNECTION	ASME B16.5
JOINT STRENGTH	ASME B16.34
WALL THICKNESS	ASME B16.34
BASIC DESIGN	ASME B16.34

No.	Name	Material
1	Body	Stainless Steel ASTM A351 CF8M
2	Cap	ASTM A351 CF8M
3	Ball	ASTM A351 CF8M
4	Seat	TFM
5	Stem	17-4PH
6	Gasket	SMC SSS304/Graphite
7	Thrust Washer	25%Carbon+TFM
8	Stem Packing	Graphite
9		
10		
11	Anti-Static	SS304
12	Body Stud	ASTM A193 B8M
13	Body Nut	ASTM A194 8M
14	Packing Follower	SS304
15	Packing Gland	ASTM A351 CF8
16	Gland Bolt	SS304
17		
18		
19		
20	Ball Valve Washer	SS420

REVIEW ALL STANDARD SOFT PARTS FOR APPLICATION COMPATIBILITY



4815 W. 5th Street
Lumberton, NC 28358
Website: www.flo-tite.com
Tel.: 910-738-8904
Fax: 910-738-9112
E-mail: flo-tite@flo-tite.com