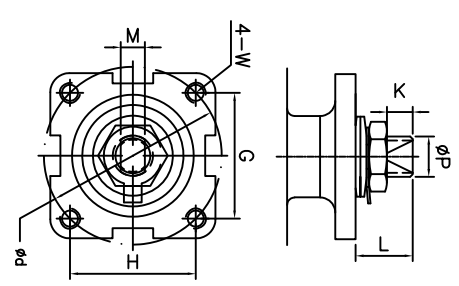
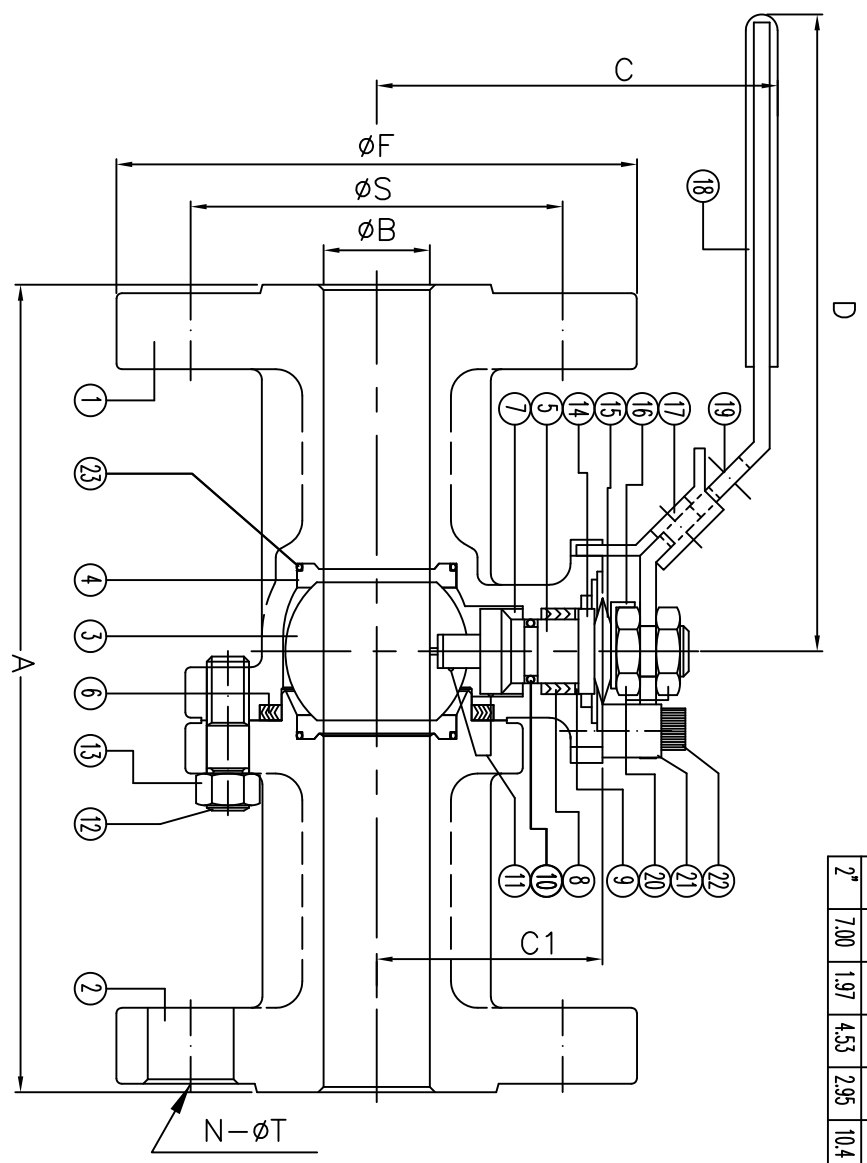


F150 Series	Class 150	CF8M	TFM Seat
FIRE SAFE API 607-7			Size 1/2"-2"

DS-F150-SS-F-G-G-V-L

Size	A	B	C	C1	D	F	N	S	T	d	G	H	K	L	M	P	W	ISO
1/2"	4.25	0.59	2.60	1.54	6.50	3.50	4	2.38	0.62	1.65	1.17	1.17	0.31	0.55	0.250	0.37	#10-24UNC	F04
3/4"	4.62	0.79	2.91	1.67	6.50	3.88	4	2.75	0.62	1.65	1.17	1.17	0.31	0.55	0.250	0.37	#10-24UNC	F04
1"	5.00	0.98	3.43	2.06	7.87	4.25	4	3.12	0.62	1.97	1.39	1.39	0.43	0.75	0.315	0.43	1/4-20UNC	F05
1 1/4"	5.50	1.26	3.62	2.20	7.87	4.62	4	3.50	0.62	1.97	1.39	1.39	0.43	0.75	0.315	0.43	1/4-20UNC	F05
1 1/2"	6.50	1.50	4.13	2.65	9.84	5.00	4	3.88	0.62	2.76	1.95	1.95	0.55	0.91	0.374	0.62	5/16-18UNC	F07
2"	7.00	1.97	4.53	2.95	10.4	6.00	4	4.75	0.75	2.76	1.95	1.95	0.55	0.91	0.374	0.62	5/16-18UNC	F07

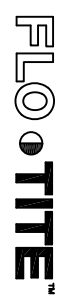


No.	Name	Material
1	Body	ASTM A351 CF8M
2	Cop	ASTM A351 CF8M
3	Roll	ASTM A351 CF8M
4	Seat	TFM
5	Stem	SS316
6	Gasket	5% S3316/graphite
7	Thrust Washer	25%Carbon+TFM
8	Stem Packing	Graphite
9	Packing Protector	50%PTFE+SS316
10	O-Ring	Viton
11	Anti-Static	SS316
12	Body Stud	ASTM A193 B8
13	Body Nut	ASTM A194 Gr. 8
14	Packing Follower	SS304
15	Bellville Washer	SS301
16	Lock Washer	SS304
17	Locking Device	SS304
18	Handle Sleeve	Plastic
19	Handle	SS304
20	Thin Nut	SS304
21	Valve Stop	SS304
22	Stop Ball	SS304
23	Seat O-Ring	Buna N

ANSI RATING CLASS 150
 SEAT TEST @ 80-100 PSI ASME B16.34
 SHELL TEST @ 425 PSI ASME B16.34
 PRESSURE TEMPERATURE RATING ASME B16.34
 FACE TO FACE DIMENSION ASME B16.10
 END CONNECTION ASME B16.5
 JOINT STRENGTH ASME B16.34
 WALL THICKNESS ASME B16.34
 BASIC DESIGN ASME B16.34

For certified drawing, consult factory

Drawn by:	Date:	Scale: NTS	Rev: 0	Drawing Title: Flange Ball Valve Class 150 1/2"-2"
Checked by:	Date:	Unit: Inch	Sheet: xxx	Drawing No.: DS-F150SSFGV-L-01-HC
Approved by:	Date:	Material: See Notes		



4815 W. 5th Street
 Lumberton, NC 28358
 Website: www.flo-tite.com
 Tel: 910-738-8904
 Fax: 910-738-9112
 E-mail: info@flo-tite.com

REVIEW ALL STANDARD SOFT PARTS FOR APPLICATION COMPATIBILITY