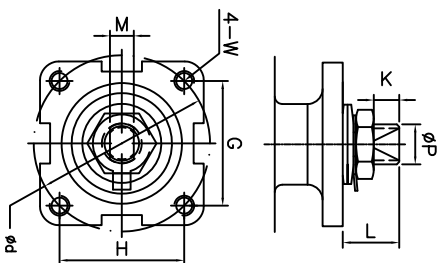
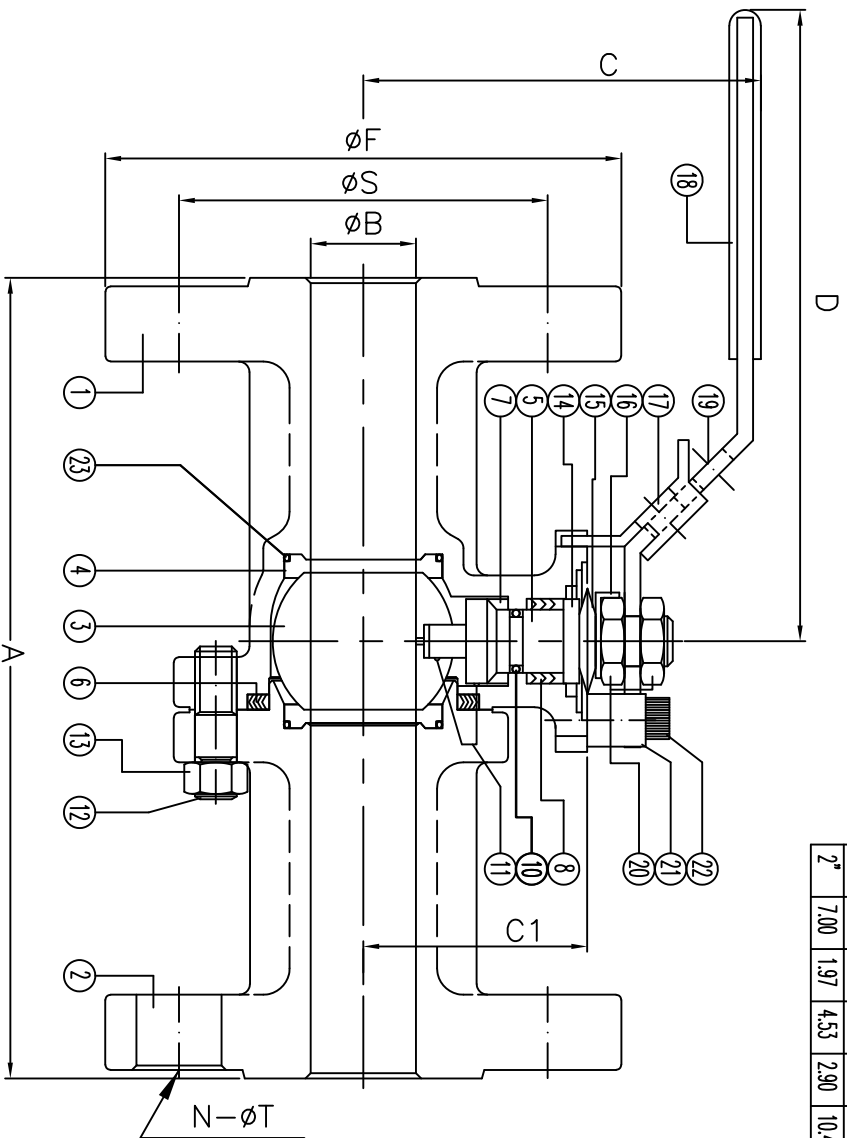


F150 Series	Class 150	CF8M	TFM Seat
FIRE SAFE API 607-7			Size 1/2"-2"

DS-F150-SS-F-G-G-V-L

Size	A	B	C	C1	D	F	N	S	T	d	G	H	K	L	M	P	W	ISO
1/2"	4.25	0.59	2.60	1.54	6.50	3.50	4	2.38	0.62	1.65	1.17	1.17	0.31	0.47	0.250	0.37	#10-24UNC	F04
3/4"	4.62	0.79	2.91	1.70	6.50	3.88	4	2.75	0.62	1.65	1.17	1.17	0.31	0.63	0.250	0.37	#10-24UNC	F04
1"	5.00	0.98	3.43	2.06	7.87	4.25	4	3.12	0.62	1.97	1.39	1.39	0.43	0.83	0.315	0.43	1/4-20UNC	F05
1 1/4"	5.50	1.26	3.62	2.35	7.87	4.62	4	3.50	0.62	1.97	1.39	1.39	0.43	0.75	0.315	0.43	1/4-20UNC	F05
1 1/2"	6.50	1.50	4.13	2.65	9.84	5.00	4	3.88	0.62	2.76	1.95	1.95	0.55	1.02	0.374	0.62	5/16-18UNC	F07
2"	7.00	1.97	4.53	2.90	10.4	6.00	4	4.75	0.75	2.76	1.95	1.95	0.55	0.97	0.374	0.62	5/16-18UNC	F07



ANSI RATING CLASS 150

SEAT TEST @ 80~100 PSI	ASME B16.34
SHELL TEST @ 425 PSI	ASME B16.34
PRESSURE TEMPERATURE RATING	ASME B16.34
FACE TO FACE DIMENSION	ASME B16.10
END CONNECTION	ASME B16.5
JOINT STRENGTH	ASME B16.34
WALL THICKNESS	ASME B16.34
BASIC DESIGN	ASME B16.34

No.	Name	Material
1	Body	ASTM A351 CF8M
2	Cap	ASTM A351 CF8M
3	Ball	ASTM A351 CF8M
4	Seat	TFM
5	Stem	SS316
6	Gasket	SWC SS304/Graphite
7	Thrust Washer	25%Carbon+TFM
8	Stem Packing	Graphite
9		
10	O-Ring	Viton
11	Anti-Static	SS304
12	Body Stud	ASTM A193 B8
13	Body Nut	ASTM A194 Gr. 8
14	Packing Follower	SS304
15	Belleville Washer	SA#20
16	Lock Washer	SS304
17	Locking Device	SS304
18	Handle Sleeve	Plastic
19	Handle	SS304
20	Thin Nut	SS304
21	Valve Stop	SS304
22	Stop Bolt	SS304
23	Seat O-Ring	Viton

Drawn by:	Date:	Scale: NTS	Rev: 0	Drawing Title: Flange Ball Valve Class 150 1/2"-2"
Checked by:	Date:	Unit: inch	Sheet: xxx	Drawing No.: DS-F150SSF-GG-V-L-01-YM
Approved by:	Date:	Material: See Notes		

For certified drawing, consult factory



4815 W. 5th Street  
Lumberton, NC 28358  
Website: www.flo-tite.com  
E-mail: info@flo-tite.com

Tel.: 910-738-8904  
Fax: 910-738-8112

REVIEW ALL STANDARD SOFT PARTS FOR APPLICATION COMPATIBILITY