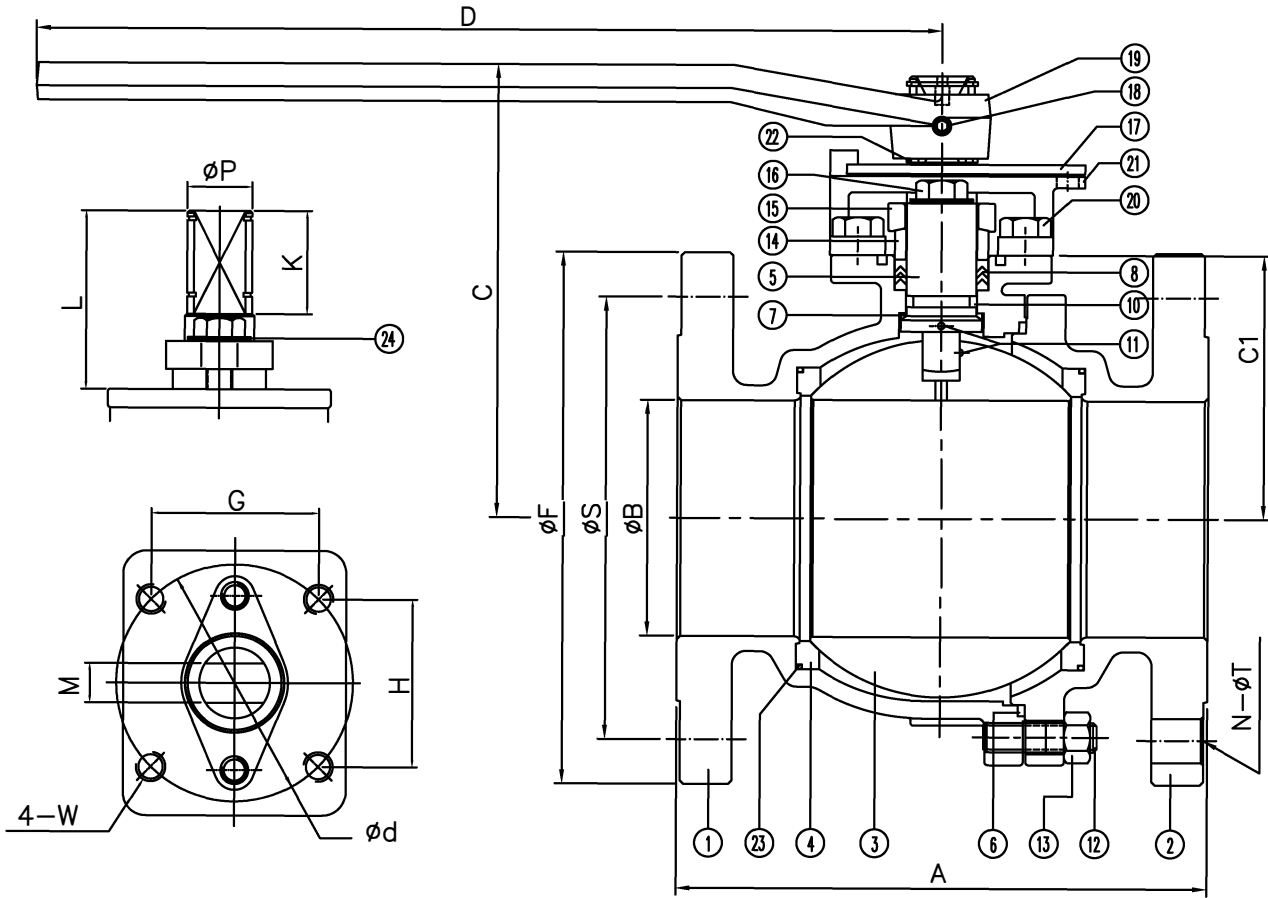


F150 Series | Class 150 | CF8M | TFM Seat
 FIRE SAFE API 607-7 | Size 2 1/2"-4"

DS-F150-SS-F-G-G-V-L

Size	A	B	C	C1	D	F	N	S	T	d	G	H	K	L	M	P	W	ISO
2 1/2"	7.50	2.56	6.22	3.39	15.4	7.00	4	5.50	0.75	4.02	2.84	2.84	1.75	3.07	0.669	1.10	1 1/2-13UNC	F10
3"	8.00	3.00	6.54	3.72	15.4	7.50	4	6.00	0.75	4.02	2.84	2.84	2.36	3.07	0.669	1.10	1 1/2-13UNC	F10
4"	9.00	4.00	7.20	4.31	15.4	9.00	8	7.50	0.75	4.02	2.84	2.84	2.28	3.07	0.669	1.10	1 1/2-13UNC	F10



No.	Name	Stainless Steel
1	Body	ASTM A351 CF8M
2	Cap	ASTM A351 CF8M
3	Ball	ASTM A351 CF8M
4	Seat	TFM
5	Stem	SS316
6	Gasket	SWG SS304/Graphite
7	Thrust Washer	25%Carbon+TFM
8	Stem Packing	Graphite
9		
10	O-Ring	Viton
11	Anti-Static	SS304
12	Body Stud	ASTM A193 B8
13	Body Nut	ASTM A194 Gr. 8
14	Packing Follower	SS304
15	Packing Gland	ASTM A351 CF8
16	Gland Bolt	SS304
17	Travel Stopper	SS304
18	Set Screw	Steel
19	Handle	Ductile Iron
20	Housing Bolt	SS304
21	Stop Housing	ASTM A351 CF8
22	Snap Ring	Plated Steel
23	Seat O-Ring	Viton
24	Belleville Washer	SS420

ANSI RATING CLASS 150	
SEAT TEST @ 80-100 PSI	ASME B16.34
SHELL TEST @ 425 PSI	ASME B16.34
PRESSURE TEMPERATURE RATING	ASME B16.34
FACE TO FACE DIMENSION	ASME B16.10
END CONNECTION	ASME B16.5
JOINT STRENGTH	ASME B16.34
WALL THICKNESS	ASME B16.34
BASIC DESIGN	ASME B16.34

For certified drawing, consult factory

Drawn by:	Date:	Scale: NTS	Rev: 0	Drawing Title: Flange Ball Valve Class 150 2 1/2" - 4"
Checked by:	Date:	Unit: inch	Sheet: xxx	Drawing No.: DS-F150SSFGGV-L-02-YM
Approved by:	Date:	Material: See Notes		

FLO TITE™
 4815 W. 5th Street | Tel: 910-738-8904
 Lumberton, NC 28358 | Fax: 910-738-9112
 Website: www.flotite.com | E-mail: flotite@flotite.com

REVIEW ALL STANDARD SOFT PARTS FOR APPLICATION COMPATIBILITY