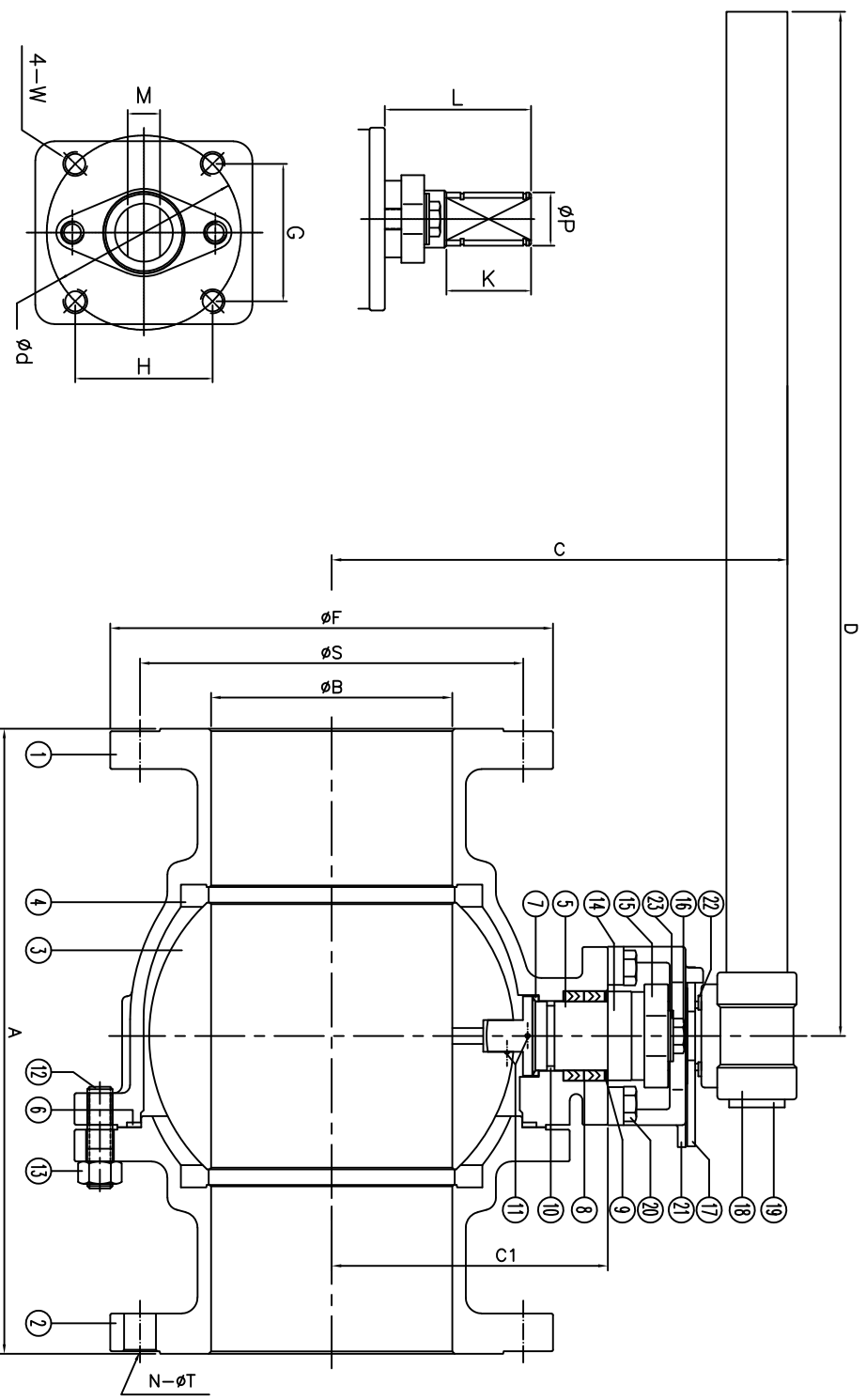


F150 Series	Class 150	CF8M	TFM Seat
FIRE SAFE API 607-7			Size 6"-8"

DS-F150-SS-F-G-G-V-L



Size	A	B	C	C1	D	F	N	S	T	d	G	H	K	L	M	P	W	ISO
6"	15.5	5.98	11.2	7.20	25.4	11.0	8	9.50	0.88	4.92	3.48	3.48	1.65	3.58	1.024	1.713	1/2-13UNC	F12
8"	18.0	7.87	11.6	7.60	25.4	13.5	8	11.75	0.88	4.92	3.48	3.48	1.65	3.58	1.024	1.713	1/2-13UNC	F12

For certified drawing, consult factory

Drawn by:	Date:	Scale: NTS	Rev: 0
Checked by:	Date:	Unit: inch	Sheet: xxx
Approved by:	Date:	Material: See Notes	

Drawing Title:	Flange Ball Valve Class 150 6" - 8"
Drawing No.:	DS-F150SS-FGGV-L-03-HC

ANSI RATING CLASS 150	
SEAT TEST @ 80~100 PSI	ASME B16.34
SHELL TEST @ 425 PSI	ASME B16.34
PRESSURE TEMPERATURE RATING	ASME B16.34
FACE TO FACE DIMENSION	ASME B16.10
END CONNECTION	ASME B16.5
JOINT STRENGTH	ASME B16.34
WALL THICKNESS	ASME B16.34
BASIC DESIGN	ASME B16.34

No.	Name	Material
1	Body	ASTM A351 CF8M
2	Cop	ASTM A351 CF8M
3	Ball	ASTM A351 CF8M
4	Seat	TFM
5	Stem	SS316
6	Gasket	SWG SS316/Graphite
7	Thrust Washer	25%Carbon+TFM
8	Stem Packing	Graphite
9	Packing Protector	50%PTFE+SS316
10	O-Ring	Viton
11	Anti-Static	SS316
12	Body Stud	ASTM A193 B8
13	Body Nut	ASTM A194 Gr. 8
14	Packing Follower	SS304
15	Packing Gland	17-4Ph
16	Gland Bolt	SS304
17	Travel Stopper	SS304
18	Junction Head	Ductile Iron
19	Pipe Grip	Carbon Steel
20	Housing Bolt	SS304
21	Stop Housing	SS304
22	Snop Ring	Plated Steel
23	Belleisle Washer	SS301

REVIEW ALL STANDARD SOFT PARTS FOR APPLICATION COMPATIBILITY



4815 W. 5th Street
Lumberton, NC 28358
Website: www.flo-tite.com
Tel: 910-728-8904
Fax: 910-728-9112
E-mail: ftdt@flo-tite.com