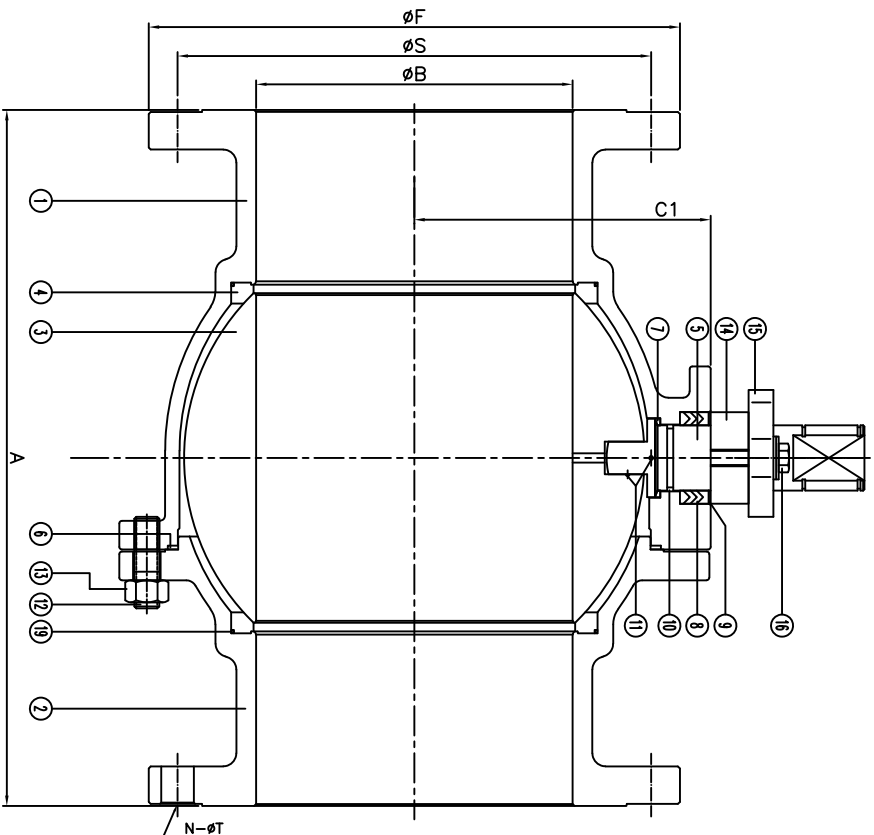
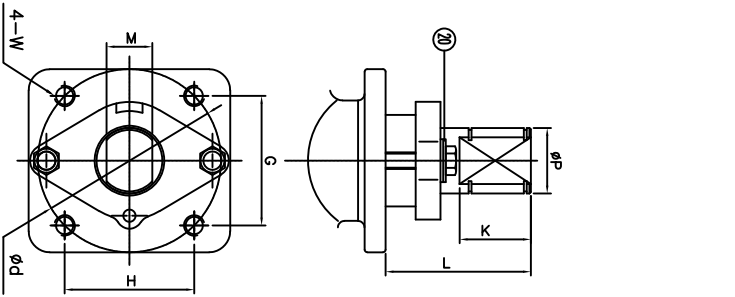


F150 Series	Class 150	CF8M	TFM Seat
FIRE SAFE API 607-7			Size 10"-12"

DS-F150-SS-F-G-G-V-N-YM



Size	A	B	C	C1	D	F	N	S	T	d	G	H	K	L	M	P	W	ISO
10"	21.0	9.84		10.91		16.0	12	14.25	1.00	5.51	3.897	3.897	2.28	3.86	1.378	1.97	5/8-11unc	F14
12"	24.0	11.8		12.66		19.0	12	17.0	1.00	5.51	3.897	3.897	2.12	3.86	1.378	1.97	5/8-11unc	F14

No.	Name	Material
1	Body	Stainless Steel
2	Cup	ASTM A351 CF8M
3	Ball	ASTM A351 CF8M
4	Seat	TFM
5	Stem	17-4PH
6	Gasket	SWC SS304/Graphite
7	Thrust Washer	25%Carbon+TFM
8	Stem Packing	Graphite
9	O-Ring	Viton
10	Anti-Static	SS304
11	Body Stud	ASTM A193 B8M
12	Body Nut	ASTM A194 8M
13	Packing Follower	SS304
14	Packing Gland	ASTM A351 CF8
15	Gland Bolt	SS304
16	Seat O-Ring	Viton
17	Ballville Washer	SS420

ANSI RATING CLASS 150	ASME B16.34
SEAT TEST @ 80-100 PSI	ASME B16.34
SHELL TEST @ 425 PSI	ASME B16.34
PRESSURE TEMPERATURE RATING	ASME B16.34
FACE TO FACE DIMENSION	ASME B16.10
END CONNECTION	ASME B16.5
JOINT STRENGTH	ASME B16.34
WALL THICKNESS	ASME B16.34
BASIC DESIGN	ASME B16.34

Drawn by:	Date:	Scale: NTS	Rev: 0	Drawing Title: Flange Ball Valve Class 150 10" - 12" Bare Stem
Checked by:	Date:	Unit: inch	Sheet: xxx	Drawing No.: DS-F150SSFGV-N-04-YM
Approved by:	Date:	Material: See Notes		



4815 W. 5th Street
Lumberton, NC 28358
www.flo-tite.com

REVIEW ALL STANDARD SOFT PARTS FOR APPLICATION COMPATIBILITY

Tel.: 910-736-8904
Fax: 910-736-9112
E-mail: flo@flo-tite.com

For certified drawing, consult factory