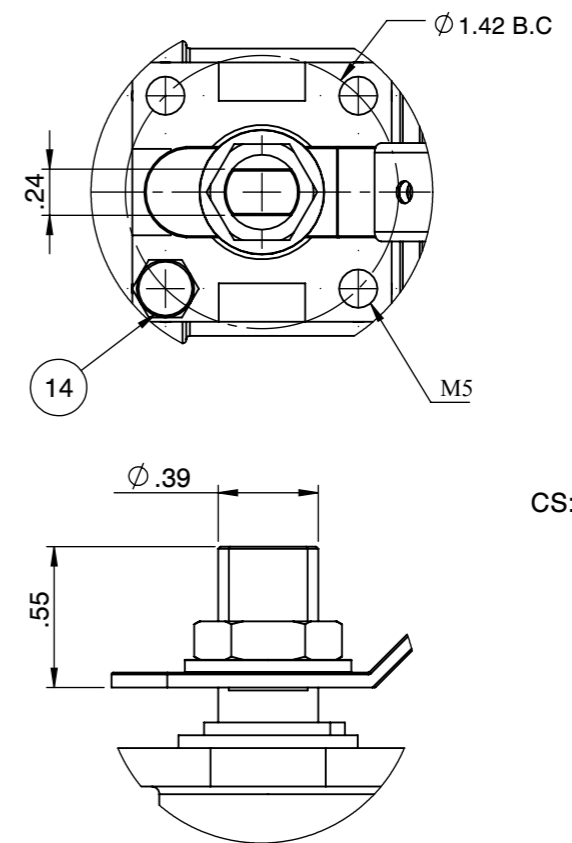
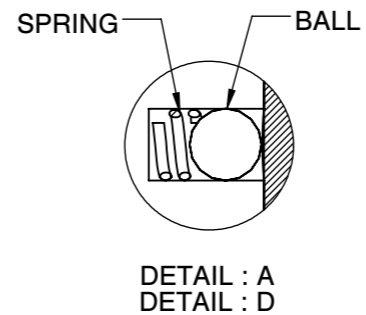
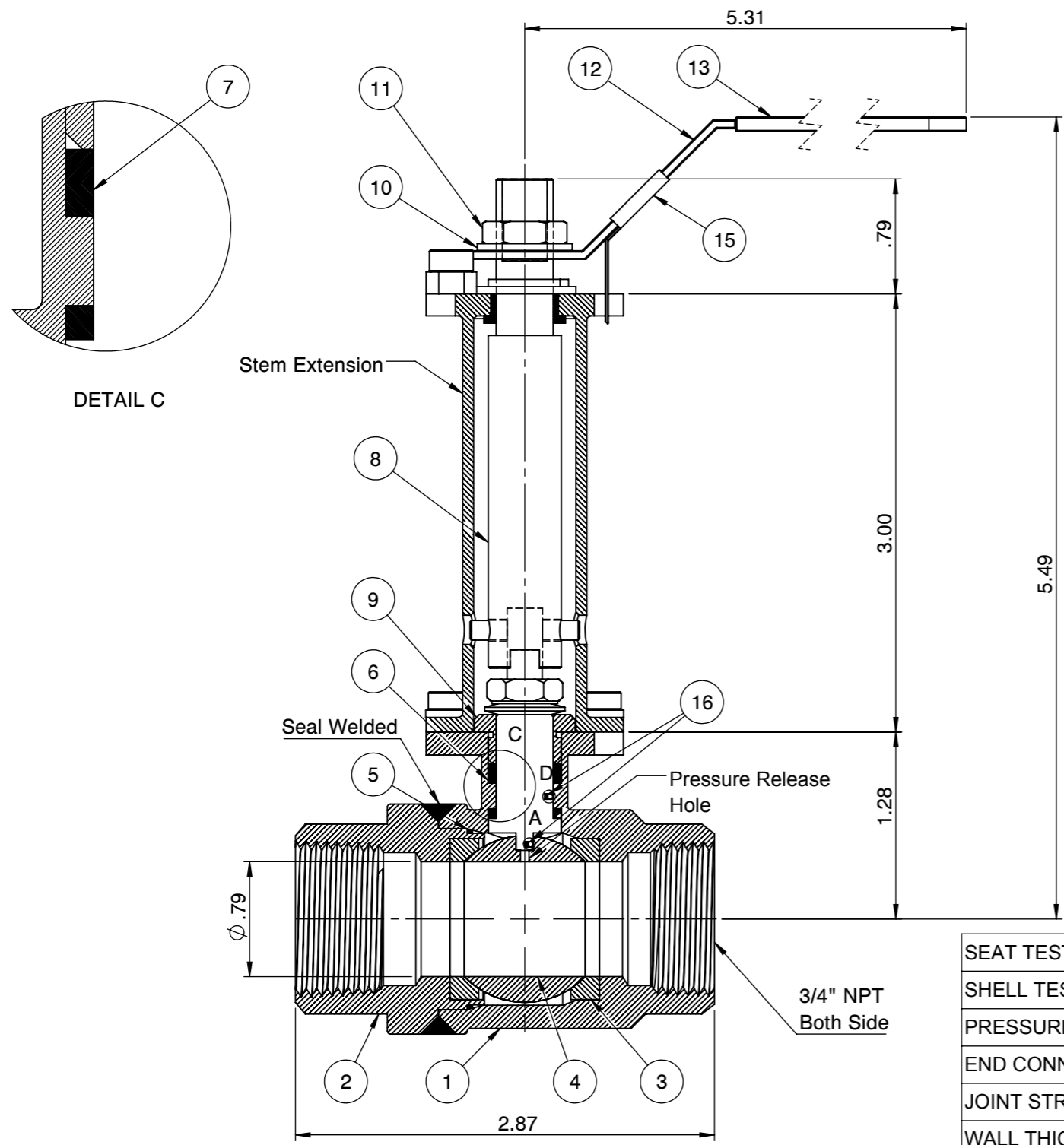




Actuator ISO Mounting Flange (F04)



CS: Flo-Tite S23CS WCB      3/4" 2000 WOG  
 1/4" - 1" Body marking



PRESSURE RATING 2000 WOG

|                             |             |
|-----------------------------|-------------|
| SEAT TEST @ 80~100 PSI      | ASME B16.34 |
| SHELL TEST @ 2175 PSI       | ASME B16.34 |
| PRESSURE TEMPERATURE RATING | ASME B16.34 |
| END CONNECTION              | ASME B16.11 |
| JOINT STRENGTH              | ASME B16.34 |
| WALL THICKNESS              | ASME B16.34 |
| BASIC DESIGN                | ASME B16.34 |

| No. | Parts              | Material          |
|-----|--------------------|-------------------|
| 1   | Body               | ASTM A216 WCB     |
| 2   | End Cap            | ASTM A216 WCB     |
| 3   | Seat               | Super-Tek III     |
| 4   | Ball               | ASTM A351 CF8     |
| 5   | Gasket             | Graphite          |
| 6   | Thrust Washer      | 25% Carbon PTFE   |
| 7   | Stem Packing       | Graphite          |
| 8   | Stem               | A276-304 / 17-4PH |
| 9   | Gland              | SS304             |
| 10  | Handle Washer      | SS304             |
| 11  | Handle Nut         | SS304             |
| 12  | Handle             | Zinc Plated Steel |
| 13  | Handle Cover       | PVC               |
| 14  | Stop Screw         | Steel             |
| 15  | Locking Device     | Zinc Plated CS    |
| 16  | Anti-Static Device | SS304             |

FOR CERTIFIED DRAWING CONSULT FACTORY  
 Drawn by : M      Date : June 14, 2019      Scale : Not To Scale      Rev : 0  
 Checked by : M      Date : June 14, 2019      Unit : Inch      Sheet : xxx  
 Approved by : M      Date : June 14, 2019      Material : See Notes

Drawing Title: NPT 3/4" FULL PORT BALL VALVE  
 Drawing No.: DT-S23SSFGGL020XS3

**FLO-TITE™**      4815 W. 5th Street      Tel : 910-738-8904  
 Lumberton, NC 28358      Fax : 910-738-9112  
 Website: www.flotite.com      E-mail : flotite@flotite.com