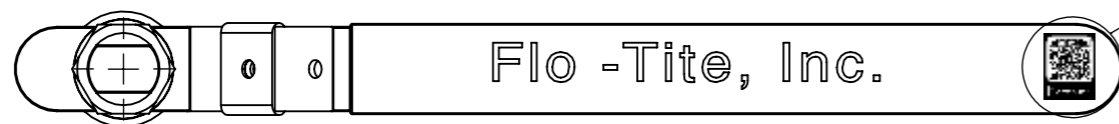


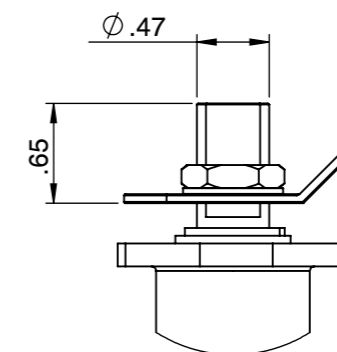
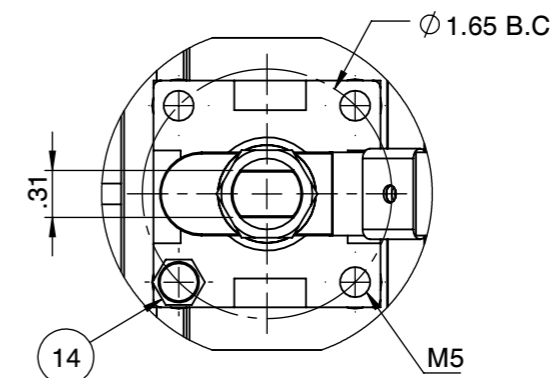
Fusion Series **2000 WOG** **SS** **Super-Tek Seat**
NON FIRESAFE PER API 607-5 **SIZE 1-1/4"**

T23-SS-F-F-G-L-032-XS3

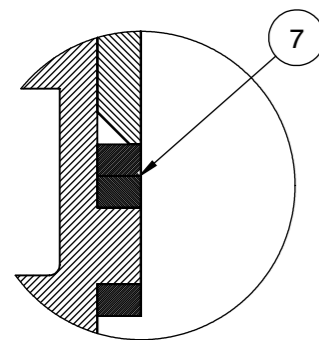


QR CODE

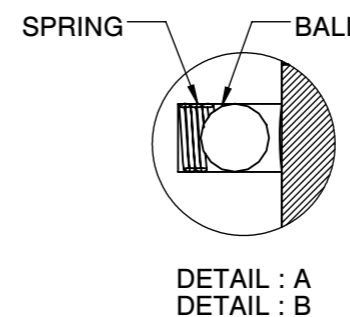
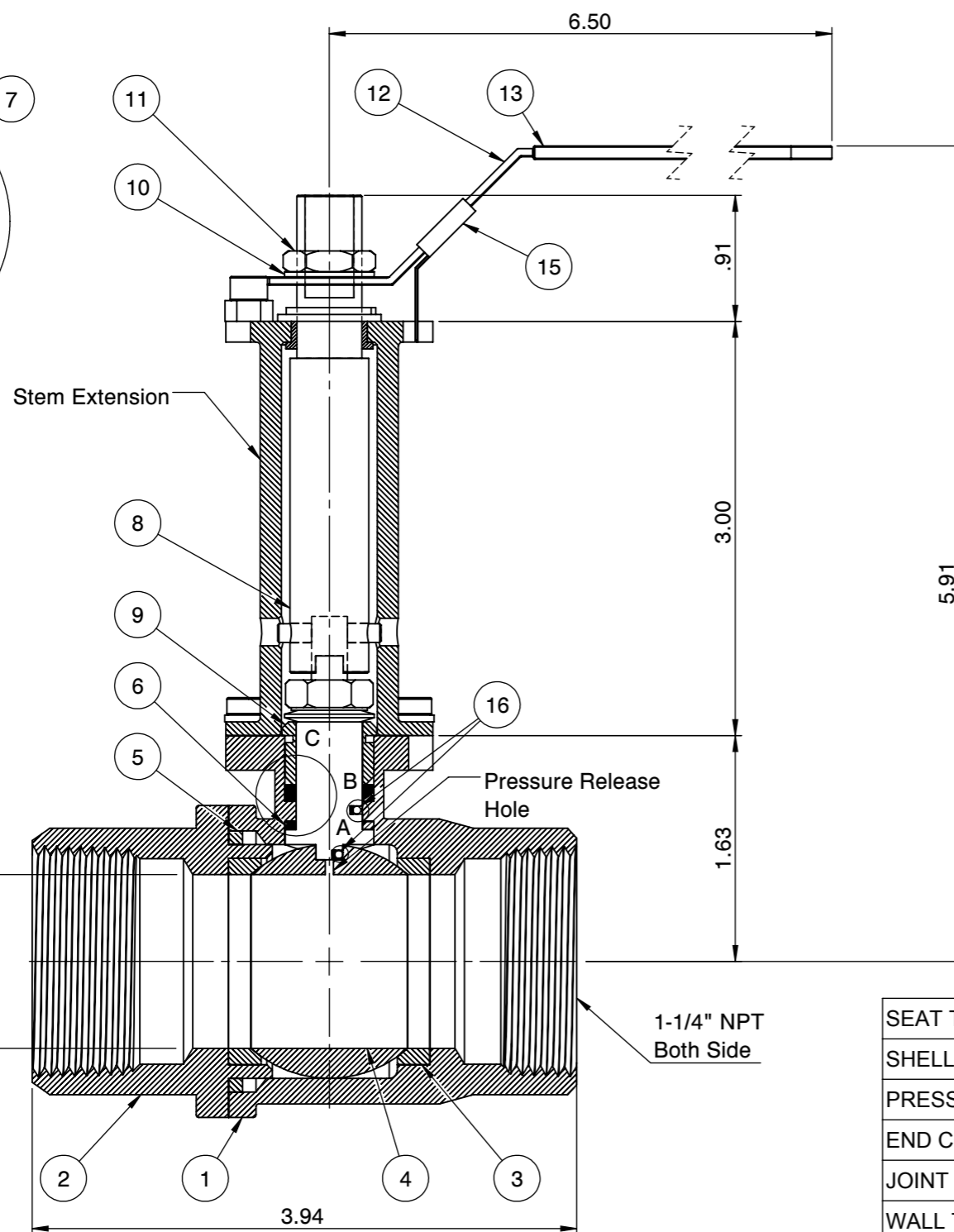
Actuator ISO Mounting Flange (F05)



1-1/4"
 SS: Flo-Tite T23SS CF8M 2000 WOG
 1-1/4" - 2" Body marking



DETAIL C



DETAIL : A
 DETAIL : B

PRESSURE RATING 2000 WOG

| | |
|-----------------------------|-------------|
| SEAT TEST @ 80~100 PSI | ASME B16.34 |
| SHELL TEST @ 2175 PSI | ASME B16.34 |
| PRESSURE TEMPERATURE RATING | ASME B16.34 |
| END CONNECTION | ASME B16.11 |
| JOINT STRENGTH | ASME B16.34 |
| WALL THICKNESS | ASME B16.34 |
| BASIC DESIGN | ASME B16.34 |

| No. | Parts | Material |
|-----|--------------------|----------------------|
| 1 | Body | ASTM A351 CF8M |
| 2 | End Cap | ASTM A351 CF8M |
| 3 | Seat | Super-Tek (TFM 1600) |
| 4 | Ball | ASTM A351 CF8M |
| 5 | Gasket | Graphite |
| 6 | Thrust Washer | TFM |
| 7 | Stem Packing | TFM |
| 8 | Stem | A276-316 / 17-4PH |
| 9 | Gland | SS304 |
| 10 | Handle Washer | SS304 |
| 11 | Handle Nut | SS304 |
| 12 | Handle | SS304 |
| 13 | Handle Cover | PVC |
| 14 | Stop Screw | SS304 |
| 15 | Locking Device | SS304 |
| 16 | Anti-Static Device | SS316 |

FOR CERTIFIED
 DRAWING CONSULT
 FACTORY

Drawn by : M Date : June 17, 2019 Scale : Not To Scale Rev : 0
 Checked by : M Date : June 17, 2019 Unit : Inch Sheet : xxx
 Approved by : M Date : June 17, 2019 Material : See Notes

Drawing Title: NPT 1-1/4" FULL PORT BALL VALVE
 Drawing No.: DT-T23SSFFGL032XS3

FLO-TITE™

4815 W. 5th Street Tel : 910-738-8904
 Lumberton, NC 28358 Fax : 910-738-9112
 Website: www.flotite.com E-mail : flotite@flotite.com

REVIEW ALL STANDARD SOFT PARTS FOR APPLICATION COMPATIBILITY