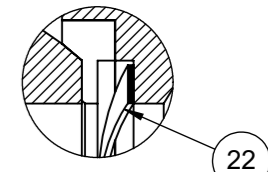
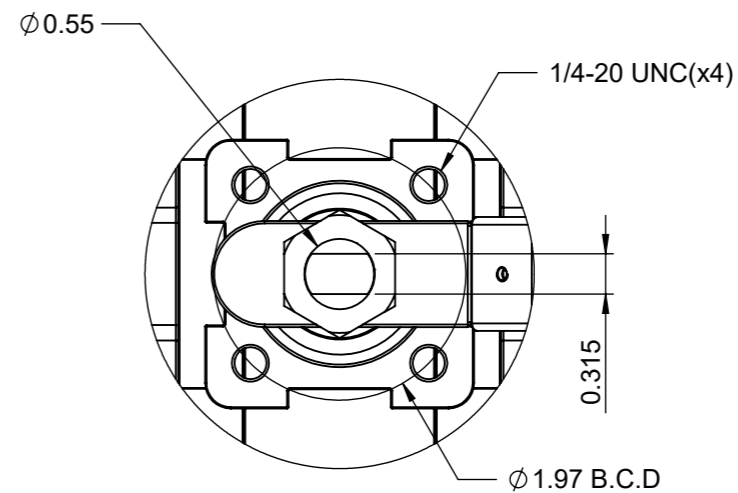


|                            |                |                    |                   |                  |                                   |
|----------------------------|----------------|--------------------|-------------------|------------------|-----------------------------------|
| <b>Tri-Pro Series</b>      | <b>2250WOG</b> | <b>WCB</b>         | <b>Metal Seat</b> | <b>FULL PORT</b> | <b>HPF41-CS-1-MGG-L-032-C5/C6</b> |
| <b>FIRE SAFE API 607-7</b> |                | <b>SIZE 1-1/4"</b> |                   |                  |                                   |



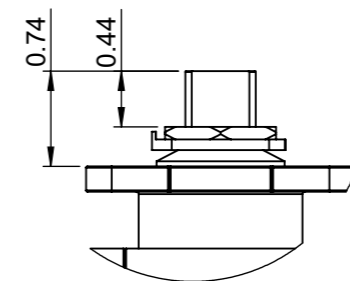
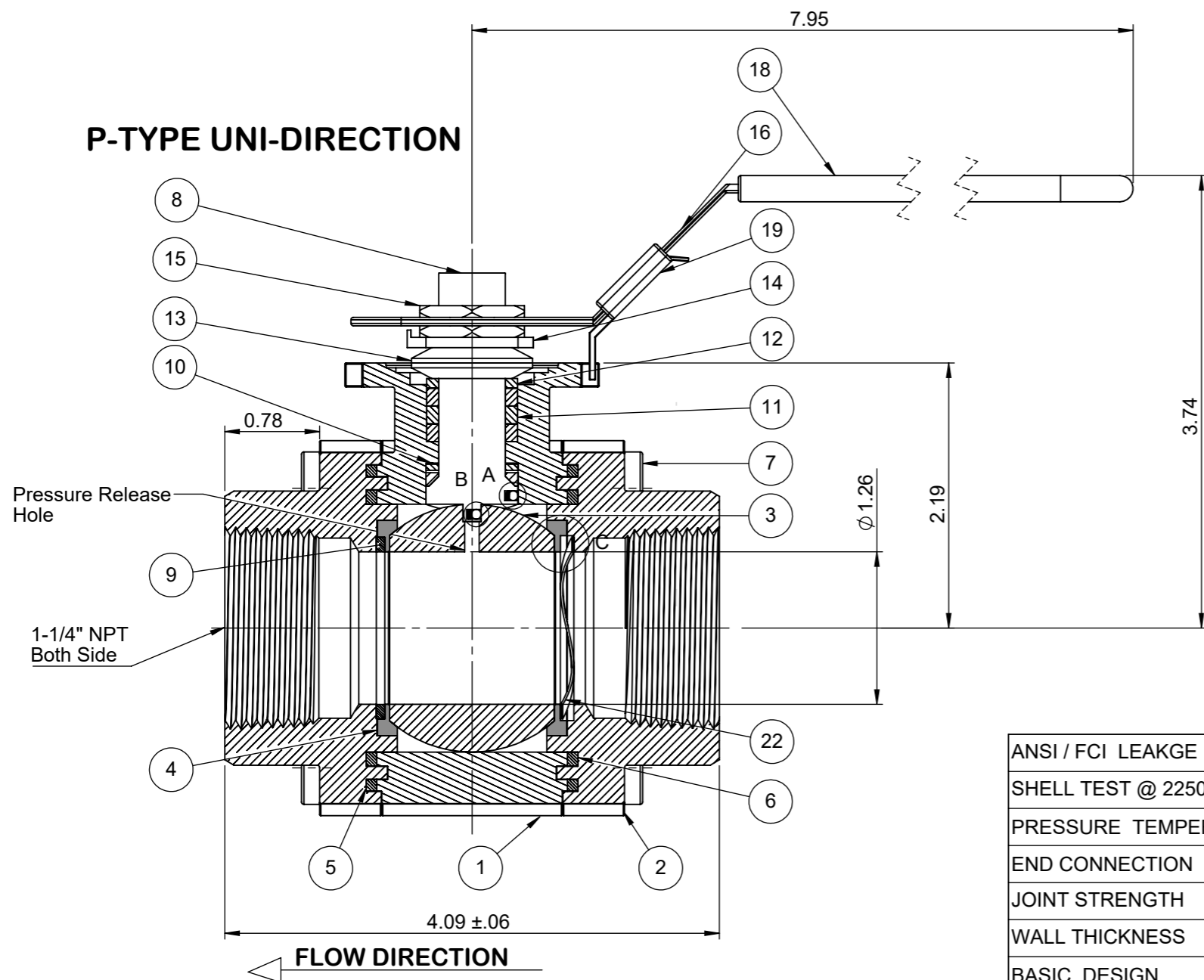
QR CODE

Actuator ISO Mounting Flange (F05)

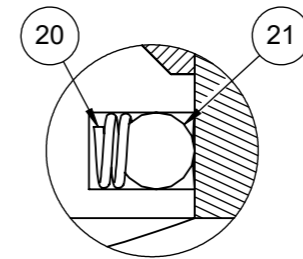


DETAIL C

**P-TYPE UNI-DIRECTION**



DETAIL : A  
DETAIL : B



| NO | Name               | Material                    |
|----|--------------------|-----------------------------|
| 1  | Body               | ASTM A216 WCB               |
| 2  | Cap                | ASTM A216 WCB               |
| 3  | Ball               | Forged SS316 Carbide Coated |
| 4  | Seat               | Forged SS316 Carbide Coated |
| 5  | Gasket (Inner)     | Graphite                    |
| 6  | Gasket (Outer)     | Graphite                    |
| 7  | Bolt               | EN3506 A2-70/A193 B8        |
| 8  | Stem               | 17-4PH                      |
| 9  | Seat Gasket        | Graphoil                    |
| 10 | Thrust Washer      | NIT60                       |
| 11 | Stem Packing       | Graphite                    |
| 12 | Packing Follower   | SS304                       |
| 13 | Belleville Washer  | SS301                       |
| 14 | Tap Lock Washer    | SS304                       |
| 15 | Stem Nut           | SS304                       |
| 16 | Handle             | SS304                       |
| 17 | Stopper            | SS304                       |
| 18 | Plastic Cover      | Plastic                     |
| 19 | Locking Device     | SS304                       |
| 20 | Anti-Static Spring | SS301                       |
| 21 | Anti-Static Ball   | SS316                       |
| 22 | Wavo Spring        | 17-7/Inconel/A286           |

PRESSURE RATING 2250 WOG

| ANSI / FCI LEAKGE CLASS     | SHUT-OFF CLASS V/VI |
|-----------------------------|---------------------|
| SHELL TEST @ 2250 PSI       | ASME B16.34         |
| PRESSURE TEMPERATURE RATING | ASME B16.34         |
| END CONNECTION              | ASME B16.11         |
| JOINT STRENGTH              | ASME B16.34         |
| WALL THICKNESS              | ASME B16.34         |
| BASIC DESIGN                | ASME B16.34         |

|                 |                         |                      |             |
|-----------------|-------------------------|----------------------|-------------|
| Drawn by : M    | Date : November 9, 2018 | Scale : Not To Scale | Rev : 0     |
| Checked by : M  | Date : November 9, 2018 | Unit : Inch          | Sheet : xxx |
| Approved by : M | Date : November 9, 2018 | Material : See Notes |             |

|                |                                |
|----------------|--------------------------------|
| Drawing Title: | NPT 1-1/4"FULL BORE BALL VALVE |
| Drawing No.:   | DT-HPF41-CS-1-MGG-L-032-C5/C6  |

**FLO TITE™** 4815 W. 5th Street Tel : 910-738-8904  
 Lumberton, NC 28358 Fax : 910-738-9112  
 Website: www.flotite.com E-mail : flotite@flotite.com

REVIEW ALL STANDARD SOFT PARTS FOR APPLICATION COMPATIBILITY