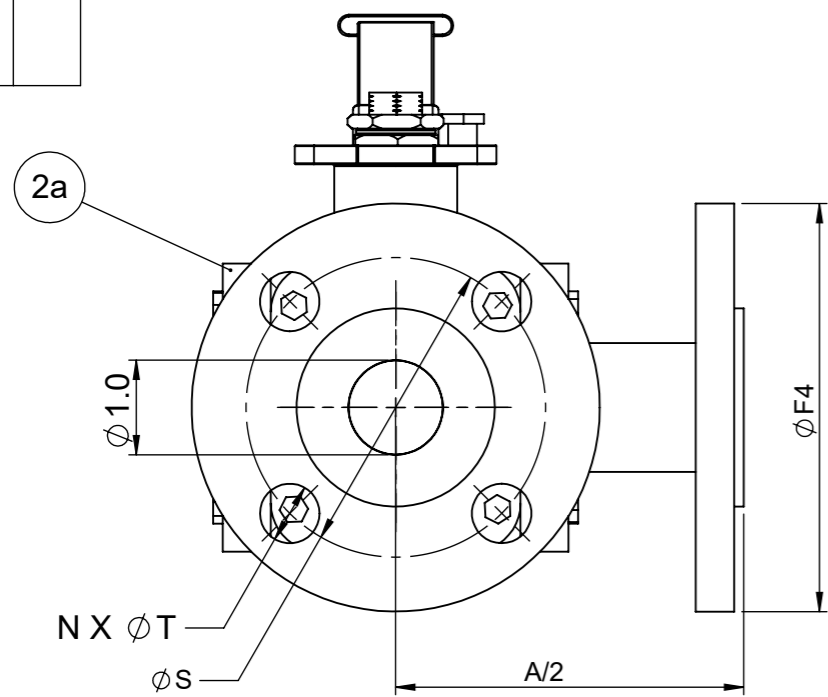
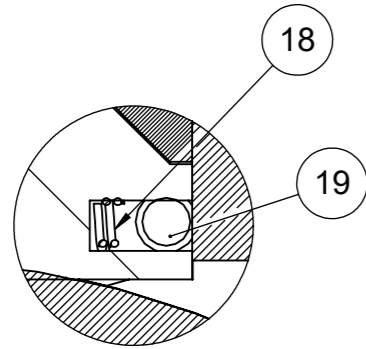
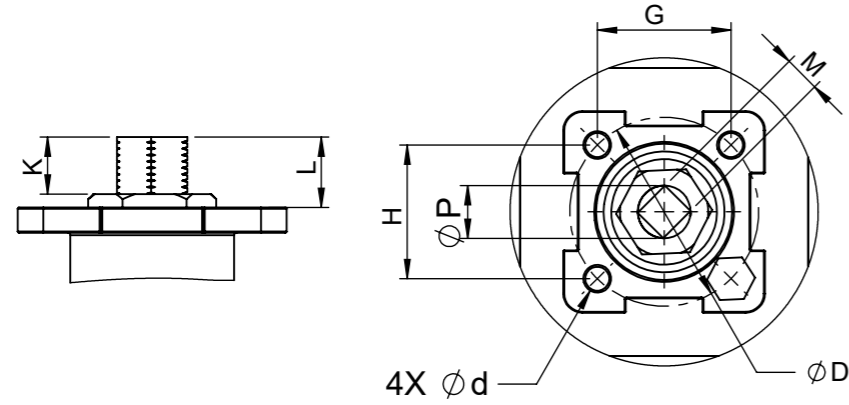
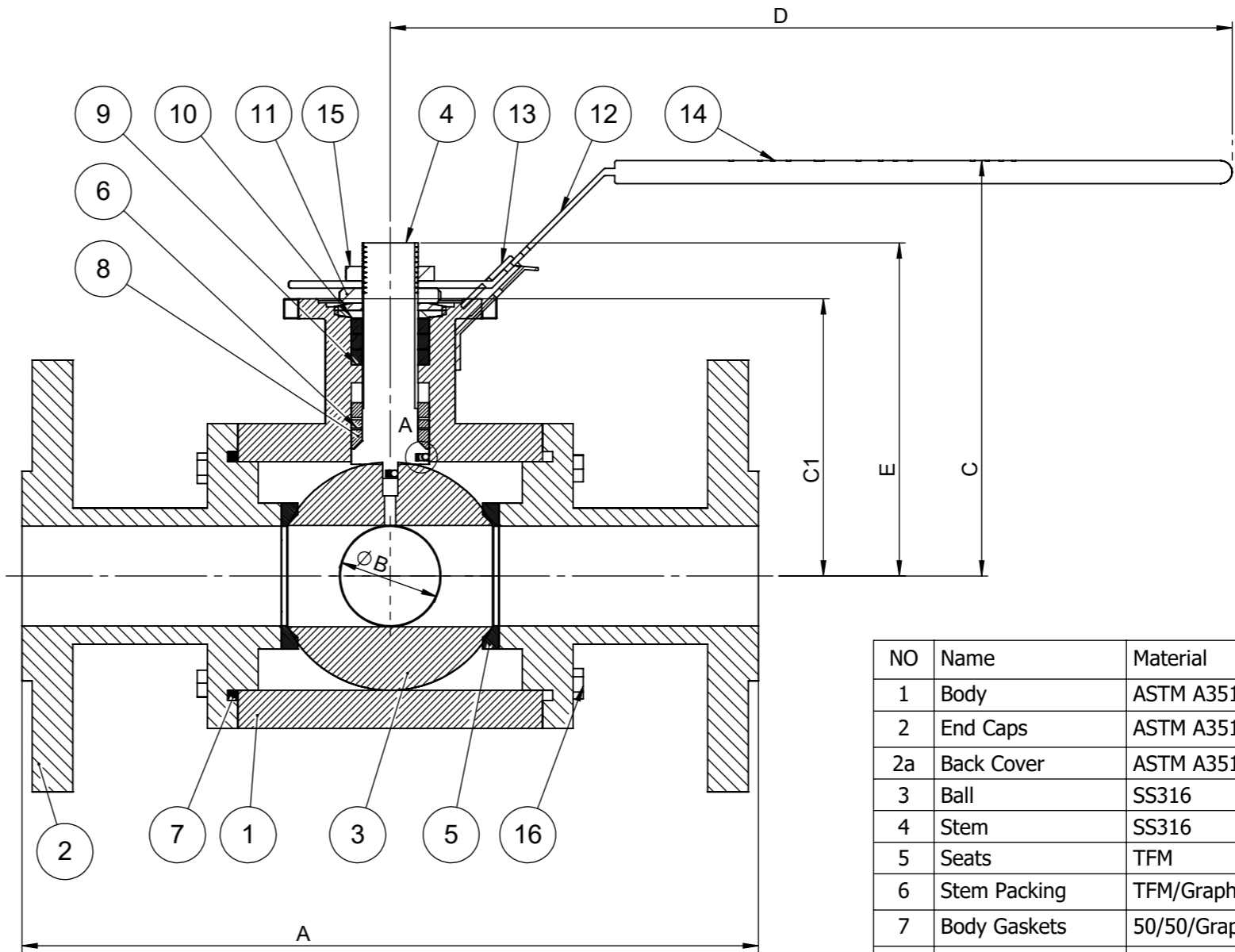


Trans-Flo Series
ANSI 150 316SS
TFM Seat
FULL PORT
Size 1/2" - 1"

MOUNTING DETAILS



SIZE	A	B	C	C1	D	E	F4	N	S	T	d	D	G	H	K	L	M	P	ISO
1/2"	6.17	0.50	3.18	1.93	7.13	2.50	3.50	4	2.38	0.62	0.28	1.97	1.39	1.39	0.47	0.57	0.354	0.46	F05
3/4"	6.65	0.75	3.95	2.50	7.60	3.06	3.88	4	2.75	0.62	0.28	2.76	1.95	1.95	0.55	0.55	0.354	0.46	F07
1"	7.25	1.00	4.09	2.73	8.25	3.28	4.25	4	3.12	0.62	0.28	2.76	1.95	1.95	0.63	0.55	0.433	0.55	F07



NO	Name	Material	Qty
1	Body	ASTM A351 CF8M	1
2	End Caps	ASTM A351 CF8M	3
2a	Back Cover	ASTM A351 CF8M	1
3	Ball	SS316	1
4	Stem	SS316	1
5	Seats	TFM	4
6	Stem Packing	TFM/Graphite *	1
7	Body Gaskets	50/50/Graphite *	4
8	Thrust Washer	50/50	1
9	Packing Follower	SS304	1
10	Belleville Washer	SS304	2
11	Stem Nut	SS304	1
12	Handle	SS304	1
13	Handle Lock	SS304	1
14	Handle Sleeve	Plastic	1
15	Handle Nut	SS304	1
16	Body Bolts	ASTM A193 B8	16
17	Handle Stop Bolt	SS304	1
18	Anti-Static Springs	SS316	2
19	Anti-Static Balls	SS316	2

ANSI CLASS 150	
ANSI / FCI LEAKGE CLASS	SHUT-OFF CLASS V/VI
SHELL TEST @ 425 PSI	ASME B16.34
PRESSURE TEMPERATURE RATING	ASME B16.34
END CONNECTION	ASME B16.11
JOINT STRENGTH	ASME B16.34
WALL THICKNESS	ASME B16.34
BASIC DESIGN	ASME B16.34

Drawn by :	M	Date :	November 9, 2018	Scale :	Not To Scale	Rev :	0
Checked by :	M	Date :	November 9, 2018	Unit :	Inch	Sheet :	xxx
Approved by :	M	Date :	November 9, 2018	Material :	See Notes		

Drawing Title: FLANGED FULL BORE BALL VALVE
Drawing No.: DT-MPF15-SS-T-FFG-L-XXX

FLO-TITE™ 4815 W. 5th Street Tel : 910-738-8904
 Lumberton, NC 28358 Fax : 910-738-9112
 Website: www.flotite.com E-mail : flotite@flotite.com