



STEAM JACKET SERIES



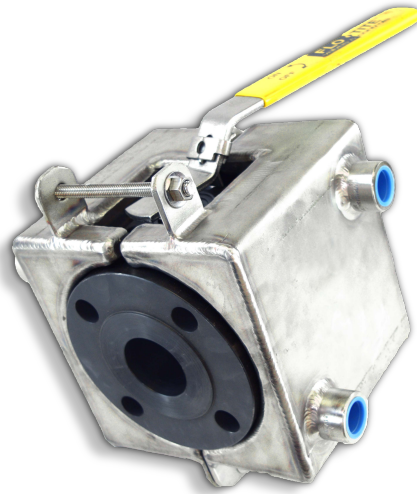
Flo-Tite's valve jackets are designed for any service where absolute control of fluids is required within a specified temperature range. With special preparation, these valves can be used for severe and hazardous chemical service.

Flo-Tite offers various types of jacketed valves for handling highly viscous materials or materials that solidify at ambient temperatures. Our steam jackets can be used with steam, hot oil, or other heat transfer medias.

The steam jacket system insures free flow through the valve and prevents clogging when valve is in the closed position.

Standard steam jackets are rated for heat transfer media pressures up to 150 psi.

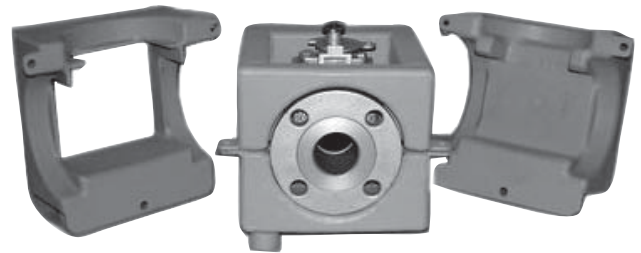
Standard arrangement for jacket connections is side and bottom connection on each half of the two-piece jacket and two side connections, and bottom connection with weld-on full jacket designs. Socket weld and weld nipple stubs are also available.



Steam Jacket

STANDARD PRODUCT NUMBER

- J1** (Partial steam jacket)
- J2** (Full steam jacket)



3 & 4 Way Multi-Port Design

Service Applications

- Asphalt Resins
- Wax Syrup
- Chocolate Jam
- Tar Glue

Jacket Types

- One Piece Full Port Body
- Weld-On Full Jacket
- Partial Jacket
- 2PC Bolt-On Jacket
- Clamp-On Jacket

Valve Size	Connection
1/2" - 2"	1/2"
3" - 6"	3/4"
8" - 12"	1"

Latest Valve Technology for Valves Requiring Jackets

Flo-Tite's new Kompact Flanged Wafer Ball is one of the valve industries lowest cost and easiest to Jacket ball valves.

- Narrow End to End
- Reduces Jacketing Cost

One Piece Full Port Body

Allows full jacket with standard flanges
No body seal leaks
Allows for valve repair with no need to remove jacket
Available with both standard ball and V-port control ball.

Weld-on Full Jacket

The full jacket extends from one flange to the other.
The steam jacket is normally furnished with oversized flanges. Fully jacketed flange valves may have modified flanges with blind tapped stud holes in place of the ordinary bolt holes.

Partial Jacket

The partial jacket is available on the reduce port valve.
The jacketing is applied just to the center section of the valve. The partial jacket is generally specified to allow the use of standard flanges and retain conventional flange bolting.

Two Piece Bolted Design

- Ease of Installation
- Removable for Valve Repair
- Jacket can be reused in the event the basic valve has to be replaced.
- The flow of heat transfer doesn't have to be shut down when the jacket remains connected.
- Eliminates the need for oversized flanges when full jacketing is required.

Clamp-on Jacket

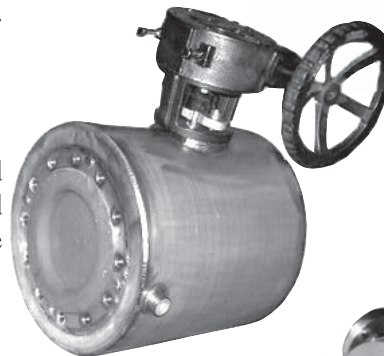
This jacket offers flexibility not available in the other configurations. Clamp-on jacketing can be applied to valves already in service or can be removed and reinstalled on a replacement valve. Similar to the bolt on or the weld-on jacket, except it is not a custom fit to a particular valve. It is more universal in nature.

Custom Design Jacket

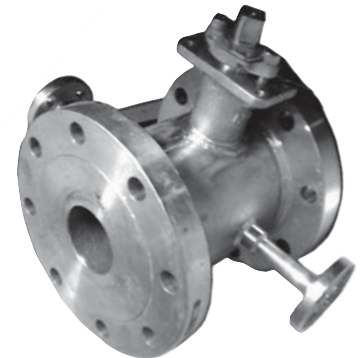
Custom fabricated to customer specifications, with custom end fittings, connections, materials, and dimensions.



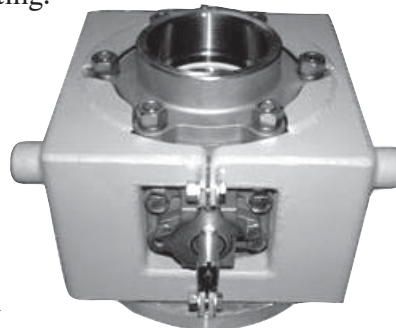
Kompact



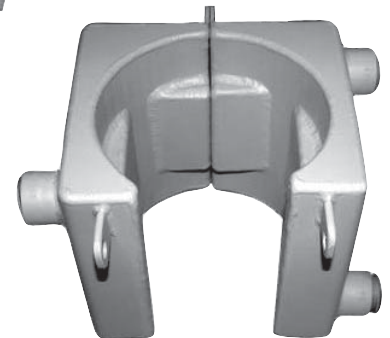
Full Jacket



Partial Jacket



Bolt-on Jacket



Clamp-on Jacket