



Three Piece Full Bore Tank Valve

FLUSH BOTTOM SERIES

Model :

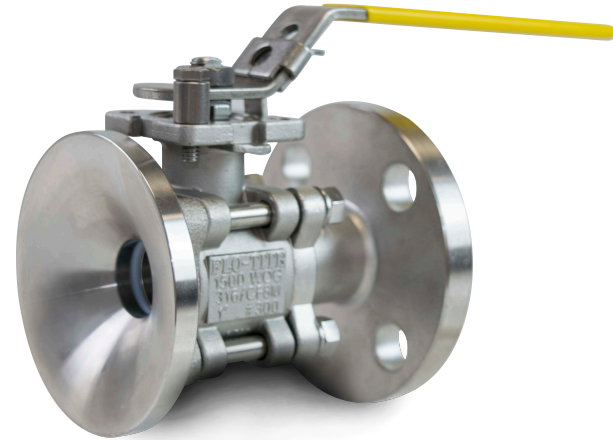
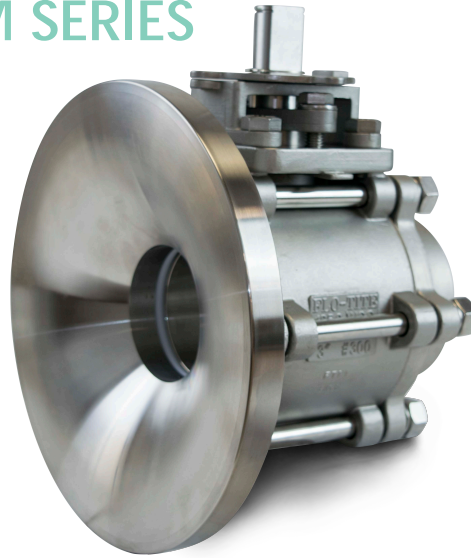
TK300

Size Range:

1" - 8"

Pressure Rating:

1500 WOG



Tank Bottom Series

STANDARD PRODUCT NUMBER

TK300-SS-1-FFF-L	Tank x NPT ends
TK300-SS-2-FFF-L	Tank x SW ends
TK300-SS-3-FFF-L	Tank x BW ends
TK300-SS-4-FFF-L	Tank x Flange ends

Series: TK300 Size: 1" - 8"

DESIGN FEATURES:

The geometric design of the tank pad is an integral part of the surface, allowing a smooth flow, preventing stagnation of the media, resulting in a perfect adaptor between the tank and the valve body.

Our Flush Bottom Series minimizes the dead space between the valve ball and the tank.

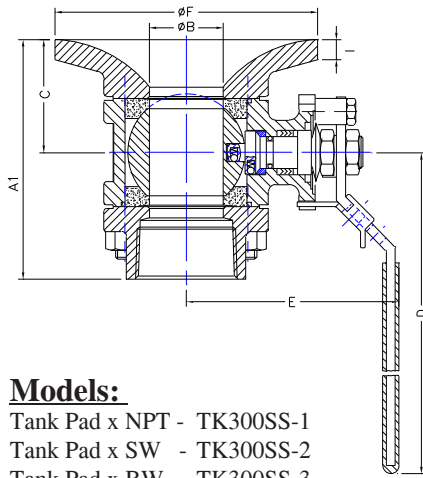
CF3M-316L Tank Pad

Model Numbers	Pipe Side End Connection Option
TK300-1	Threaded
TK300-2	Socket Weld
TK300-3	Butt Weld
TK300-4	ANSI Class 150
TK300-5	Sanitary Clamp
TK300-7	Tube O.D.

Full body cavity fillers available for all sizes.

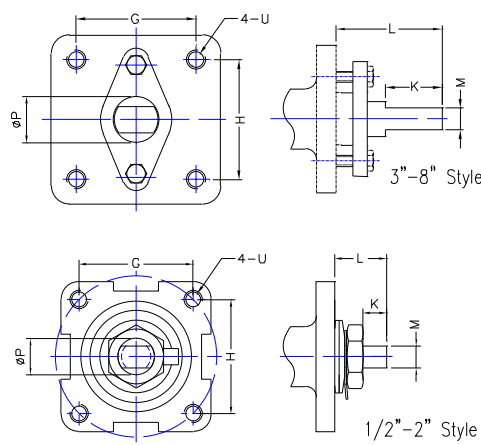
Flo-Tite's Flush Bottom Valves meet ASME Boiler and Pressure Vessel Code Section 8, Tank Flange Class 150 and 300.

www.flotite.com

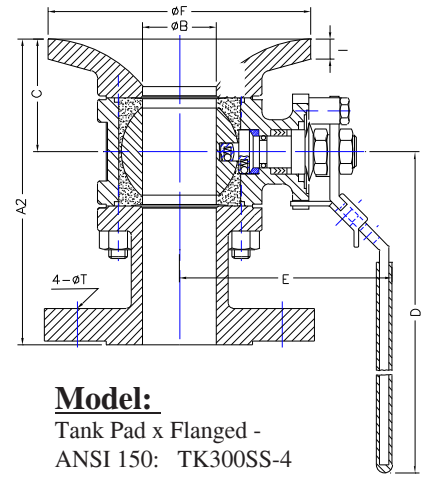


Models:

Tank Pad x NPT - TK300SS-1
 Tank Pad x SW - TK300SS-2
 Tank Pad x BW - TK300SS-3



NOTE: Verify the dimensions before manufacturing mounting hardware.



Model:

Tank Pad x Flanged -
 ANSI 150: TK300SS-4
 ANSI 300 TK300SS-8

TK300 Series

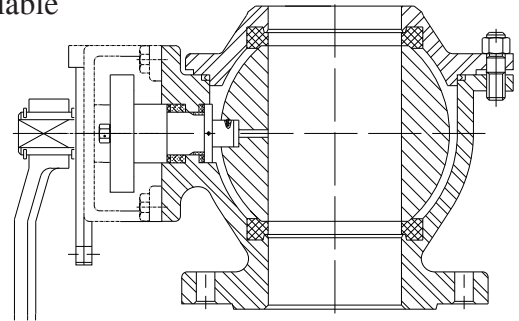
Pressure Rating:

1" - 2" 1500 WOG
 3" - 4" 1250 WOG
 6" - 8" 740 WOG

Flanged End By Butt Weld Available
 Consult Factory for Dimensions

Tank Flange Series
 Pressure Rating:
 TKF150: Class 150
 TKF300: Class 300

Model:
 Butt Weld Tankpad x Flanged
 ANSI 150: TKF150SS
 ANSI 300 TKF300SS



DIMENSIONS, WEIGHTS

SIZE	A1	A2	B	C	D	E	F	G	H	I	K	L	M	P	U	Torque In-Lb	Weight Lbs
1"	3.50	4.70	1.0	1.69	7.87	3.45	3.60	1.392	1.392	0.34	0.43	0.75	0.315	0.429	1/4-20unc	98	4
1 1/2"	4.63	6.22	1.5	2.20	9.87	4.15	5.38	1.949	1.949	0.50	0.55	0.91	0.374	0.618	5/16-18unc	270	9
2"	5.30	7.00	2.0	2.50	9.87	4.55	6.00	1.949	1.949	0.63	0.55	0.91	0.374	0.618	5/16-18unc	350	14
3"	7.95	9.03	3.0	4.00	15.25	6.45	10.00	2.840	2.840	0.69	1.75	3.07	0.669	1.102	1/2-13unc	780	44
4"	9.75	12.15	4.0	5.20	15.25	7.10	11.38	2.840	2.840	0.94	1.75	3.07	0.669	1.102	1/2-13unc	1600	70
6"	C/F	14.95	6.0	7.20	44.00	12.30	12.30	3.480	3.480	1.00	1.65	3.58	1.024	1.713	1/2-13unc	4600	150
8"	C/F	17.43	8.0	8.43	44.00	13.50	18.00	3.480	3.480	1.23	1.65	3.58	1.024	1.713	1/2-13unc	10800	C/F

Note: For additional technical information see standard tech bulletin pages 45-18, 46-18, Multi-Choice series.

The Flo-Tite flush bottom tank valve is a compact, reliable product designed specifically for welding to any shape tank or vessel. The pad is stainless steel type CF3M-316L that is ideal for welding because of its true full port design. Tank emptying times are minimized and port plugging or clogging is eliminated. There is very little stagnant area due to the close proximity of the ball to the flush plate.

Cavity fillers may be added to Flo-Tite's flush bottom series. Designed to fill the cavity of the valve between the body and the ball, they minimize problems with trapped fluid in the valve body that could contaminate the process or prevent smooth operation of the valve. Flo-Tite designs its cavity fillers to be integral parts of the valve seat. This eliminates the need to have two standard seats and two part cavity fillers.



Flo-Tite, Inc.
 4815 West 5th St.
 Lumberton, NC 28358

P. O. Box 1293
 Lumberton, NC 28359
 Website: www.flotite.com

Tel: (910) 738-8904
 Fax: (910) 738-9112
 E-mail: flotite@flotite.com

Due to continuous development & improvement of our product range, we reserve the right to alter the dimensions and technical data included in this brochure

Printing Date 2018/09