



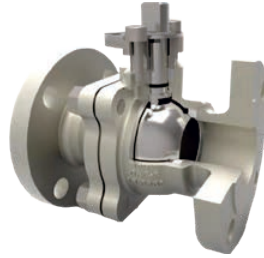
For **EXTREME CORROSION**
where ordinary metal just doesn't last!

Extreme Corrosion Alloys:

Titanium, Hastelloy, Inconel, Nickel Alloys, Chromium, Zirconium, Copper



Plug Valves
2"-24"
ANSI-150/300/600/900



Floating Ball Valve
1/2"-10"
ANSI 150/300/600/900/1500



Gate Valves
2"-60" and ANSI 1500
ANSI 150/300/600/900/1500



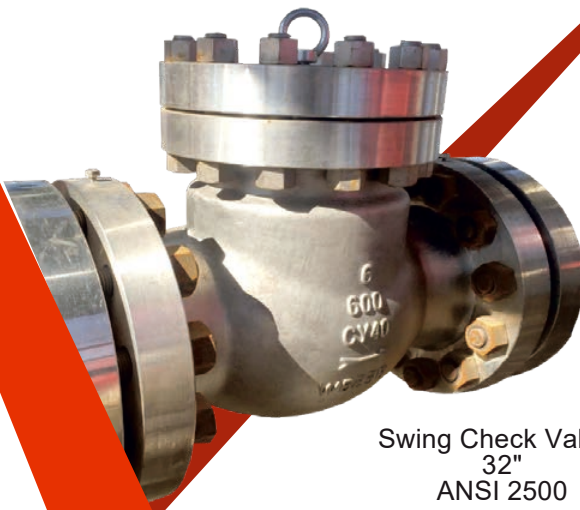
Double Offset Butterfly
2"-100"
ANSI 150/300/600



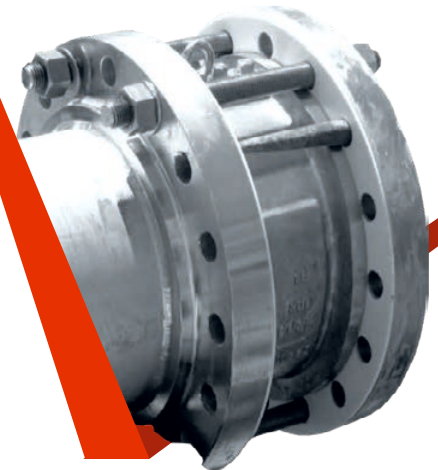
Triple Offset Butterfly
3"-80"
ANSI 600



Trunnion Ball Valves
2"-48"
ANSI 150/600/900/1500/2500



Swing Check Valves
32"
ANSI 2500



Wafer Swing Check
32"
ANSI 2500

Hi-Tek Valves Specializes in a Wide
Selection of Special Alloys

Hi-TEK SuperAlloy

INNOVATION



For High Purity applications, we operate a Class 100,000 clean room for cleaning, assembly, testing and packing to insure the safety of your products and eliminating in-field cleaning processes. Typically offered for Semiconductor, chemical, pharmaceutical or other industries that require high purity.



Our valves are available with heat dissipating bonnets for high temperature applications to insure that packings and actuators are safe from temperature



Titanium and Zirconium balls and seats are vacuum hardness treated to improve corrosion resistance and hardness for increased life. As an example, Titanium hardness is typically about HV <= 235. After this treatment, it exceeds HV 800.

Material	316	Titanium	Hastelloy C276	Zirconium	Monel
Ammonium fluoride	○	-	+	-	+
Ammonium hydroxide	+	+	+	○	-
Aqua Regia	-	○	-	-	-
Chlorine dioxide (wet)	-	+	+	-	-
Ferric chloride	-	+	○	○	-
10% Hydrochloric acid	-	-	+	○	○
20% Hydrochloric acid	-	-	-	○	○
Hydrofluoric acid	-	-	○	-	+
Oxalic acid	+	-	+	+	+
80% Phosphoric acid	+	-	+	○	+
50% Sulphuric acid	-	-	+	+	○

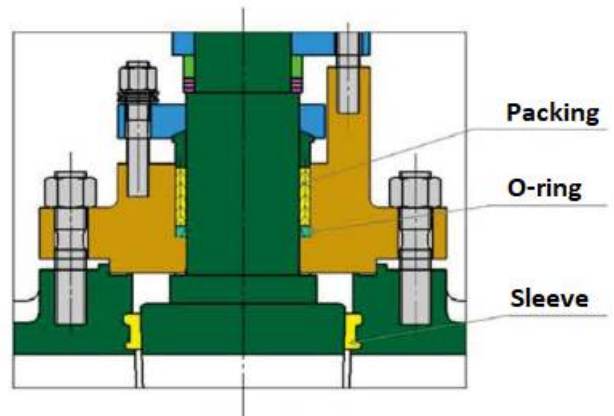
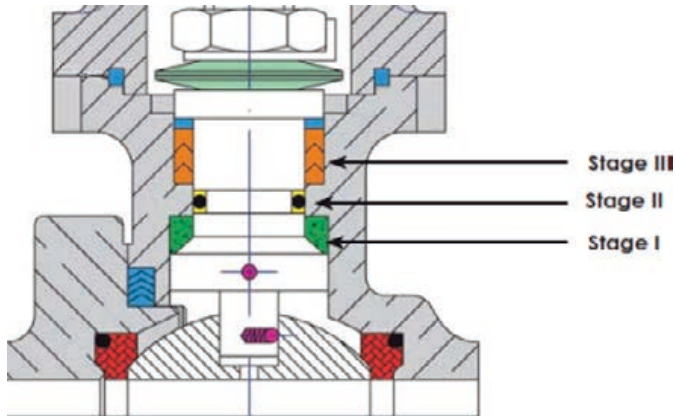
⊕ High resistance / ○ Moderate resistance / - No resistance



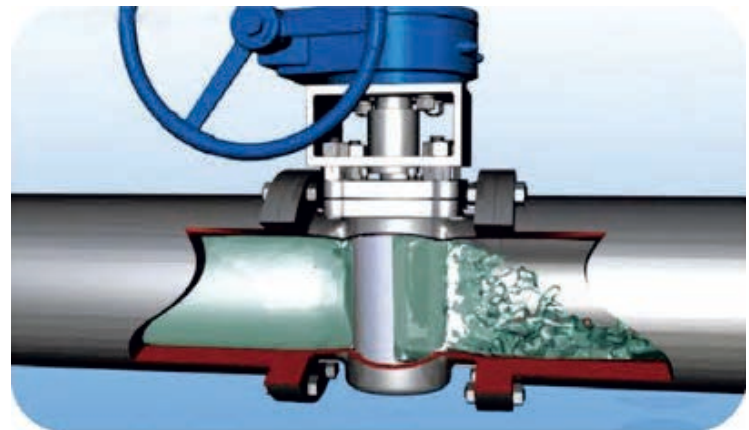
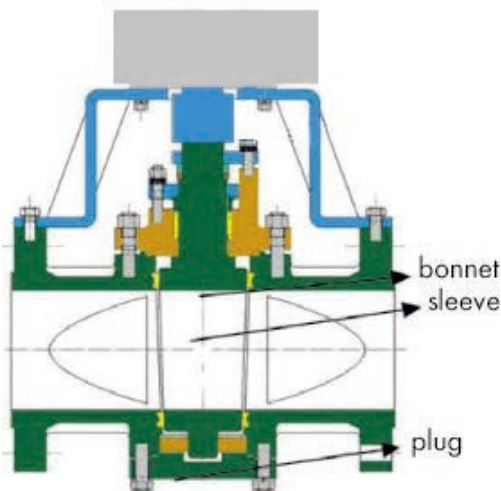
Metal seated valves are offered with a sealed particulate & self-cleaning design that reduces seat damage during operation as well as insures the valve retains its ability to open

Hi-TEK SuperAlloy

INNOVATION

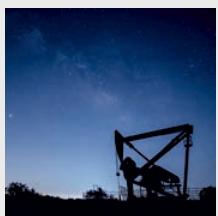


Triple protection stem seal designs, standard on many valves.



Plug valve offers patented double gland design with a patented trunnion mount. One gland independently tightens the packing, the other adjusts the plug.

Plug valves offer zero body cavity space that limit any material collection inside the valve



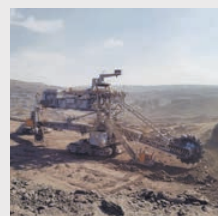
Wellhead

Super Duplex



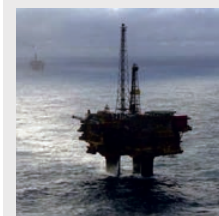
Nuclear Processes

Zirconium



Mining

Titanium



Subsea

Super Duplex



HF Acid and Alkylation

Monel

Alloy Listing

Exotic Alloy Material Series					
Common Designation	Forging Spec		Casting Spec	Service Application	
ID Codes					
Alloy 20	A20	B462 N08020	A351 CN7M	An austenitic stainless for sulfuric acid corrosion environments. Resists intergranular corrosion as welded. Resistant to chloride and polythionic acid stress corrosion cracking.	
Titanium Gr.2	T02	B381 Gr. F-2	B367 Gr. C-2	Good resistance to corrosion together with low specific weight. Widely applied in the chlor-alkali industry, soda industry, the pharmaceutical industry, fertilizer industry, nitric acid industry fields etc. Best choose for paper and pulp application.	
Titanium Gr. 3	T13	B381 Gr. F-3	B367 Gr. C-3		
Titanium Gr. 5	T15	B381 Gr. F-5	B367 Gr. C-5		
Titanium	T16	B381 Gr. F-6	B367 Gr. C-6		
Titanium	T12	B381 Gr. F-12	B367 Gr. C-12		
Titanium	T18	B381 Gr. F-7	B367 Gr. C-7		
Nickel 200	N20	B160 N02200	A494 CZ100	Used in high temperature thick alkali corrosive medium condition.	
Nickel 201	N21	B160 N02201			
Monel 400	M40	B564 N04400	A494 M35-1/M35-C	For corrosive service such as acids, alkalies, salt solutions. Mainly used in hydrogen fluoride gas and hydrofluoric acid solution condition.	
Monel K500	M50	B864 N05500			
Inconel 600	I60	B564 N06600	A494 CY40	For high temperature service, used for nuclear applications.	
Inconel 625	I62	B564 N06625	A494 CW6MC		
Inconel 800	I80	B564 N08800	A351 CT15C		
Inconel 825	I82	B564 N08825	A494 CU5MCuC		
Hastelloy B	HB1	B335 N10001	A494 N12MV		
Hastelloy B-2	HB2	B462 N10665	A494 N7M	Hastelloy super alloys are effective under high-temperature, high-stress service in a moderately to severely corrosive, and/or erosion-prone environment where more common and less expensive iron-based alloys would fail. This includes the pressure vessels of some nuclear reactors, chemical reactors, distillation equipment, and pipes and valves in the chemical industry.	
Hastelloy C276	HC6	B564 N10276	A494 N12MV		
Hastelloy C-22	HC2	B564 N06022	A494 N7M		
Hastelloy C-4	HC4	B574 N06455	A494 CW12MV/CW6M		
Hastelloy G	HG	B462 N06007	A494 CX2MW		
Hastelloy G30	HG3	B462 N06030	A494 CW2M		
Zirconium 702	Z02	B493 R60702	B752 702C		Outstanding corrosion resistance to hydrochloric acid, sulfuric acid, acetic acid, applicable for any density alkaline solution.
Zirconium 705	Z05	B493 R60705	B752 705C		

About Hi-Tek

Hi-Tek is the engineered valve division of Flo-Tite and Max-Seal. We have a long history of providing quality products into severe services such as the high corrosion components offered by our Hi-Tek SuperAlloys series. Hi-Tek offers a wide range of engineered and severe service products for your critical operations. Our engineering team develops specifications to deal specifically with difficult service conditions from control applications to corrosion, high temperature, and abrasion. It is our intent to deliver a full range of quality and reliable solutions for all types of valve problems. We strive to be your "one-stop-shop" valve and automation source.

Here's what our typical stock looks like:

- Over 85,000 Ball Valves up to 12" and 6000 PSI (3 ways as well)
- Over 700 Double/triple offsets to 30" in ANSI 150/300
- 200 Trunnion Ball valves from 2-12" to ANSI 600
- 20,000 Repair kits for actuators and valves
- Over 1700 resilient seated butterflies up to 24"
- Thousands of Strainers
- In excess of 2,000 pneumatic and electric actuators
- 115 Sentinel Series Control valves from 2 to 16" to ANSI 300
- 400 Super Alloy valves
- Thousands of check valves
- 3,500 V-balls for control valves
- Thousands of automation related accessories including solenoids, switches and controllers.
- Nearly \$50 Million in Inventory across all product segments