



## Flo-Tite Media Tank Bottom Series

### Installation, Operation and Maintenance Manual

#### NOTE:

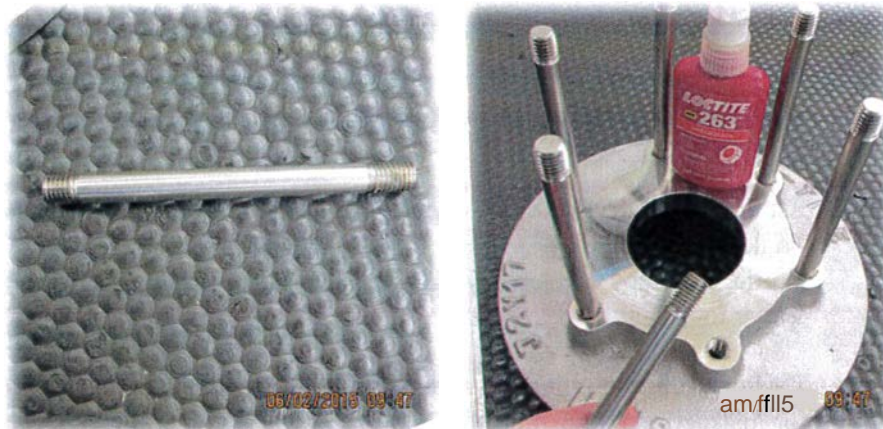
Before using a valve, read the entire IOM carefully and make sure you have a clear understanding of all information included.

This manual describes the procedures for the safe and efficient installation, operation, and maintenance of Flo-Tite Tank Bottom Series Ball Valves. **Failure to follow the procedures in this manual may result in Flo-Tite warranties being voided.** Problems with the operation and maintenance of these valves should be directed to the nearest Flo-Tite Representative. ...

1. Disassemble the valve by removing the end caps, ball, seals and seats making sure to protect the ball, seals and seats from damage.



2. Insert the tank pad rods into the tank pad using "Loctite" to secure the rods in place. Note that the rods are threaded at both ends. The shorter threaded end goes into the tank pad.



3. Obtain body back after machining. With the tank pad face down and the rods pointing up, reinsert the seat and seal into the body and carefully slide the body down over the rods making sure that the valve body sits flush on the tank pad.



4. Reinsert the ball carefully as not to scratch or dent the ball.



5. When the ball is in position, insert the seat and seal on the other side, checking their position and alignment to the body and ball.



6. Replace the second end cap over the tank pad rod ends and secure with lock washers and nuts.



7. After reassembly, rotate the valve open—close—open several times to insure smooth operation.

8. If a different seat and seal material was installed, restamp the valve accordingly.

9. This valve does not require testing.