



# Actuator Selection Guide

## **AirCon C Series**

**Pneumatic rack & pinion  
Rotary actuators  
Spring return & double acting  
Travel stop adjustments 5%  
Optional travel stop for 100%**

TB 1554



**Sizes Ranging from 55 in-lbs to  
28500 in-lbs Standard**

TB 155A



**Series XB**

## **Extended Range Series**

**AirCon heavy duty rack and  
seven pinion actuators offer  
a broad range of torques  
up to 1,565,800 inch lbs**

## **AirMax Cylinder Type**

**Dependable high-cycle operation  
The AirMax Actuator is the most  
efficient pneumatic actuator available,  
delivering precise reliable automation  
for all types of control valves.**

TB 1552



TB 1556



## **Kompact 4 Series**

**Space saving - fast acting four piston  
design- increased number of pistons  
allows for a smaller piston diameter,  
allowing less air consumption to reduce  
size while maintaining its high output torques.**

## **Automator Series**

**Spring-Diaphragm Actuator  
designed & developed specifically  
for valves that require precise control  
with low air supply.  
Torque range; 133 to 12680 inch lbs**

TB 1553







## INOX Series

**304 & 316 Stainless Steel  
Pneumatic rack & pinion  
Actuators suitable for highly  
corrosive environments.**



TB 1558



TB 152



**PRO-torq**  
electric actuators

## Pro-Torque Series

**Electric actuators built for  
industrial process &  
commercial applications.**

**Torque Range : 90 - 177,000 inch lbs.**

## POWER STROKE

**The Power-Stroke Series is a heavy-duty product line of  
pneumatic actuators ideal for operating a higher torque  
ball, butterfly, or plug valves.**

**Our Scotch-Yoke design mechanism produces a torque curve  
that closely matches requirements of valve actuation when  
converting linear to rotary motion.**

**The Scotch-Yoke produces greater torque at the beginning and the  
end of each stroke of the piston, precisely where it is required to  
operate most valve types.**

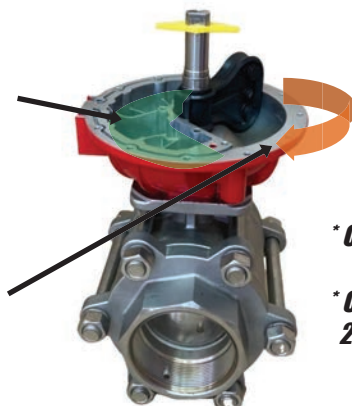
## Scotch-Yoke Actuators



TB 1560



**EZ Vane** actuators are  
significantly smaller,  
lighter, faster, and more  
cost efficient.



**Torque Range:**  
30in-lbs to 57,854 in-lbs

**Travel Stop Adjustment: +/- 5°**

**\*Only one part to replace if ever needed**

**\*Change from Fail Open to Fail close in  
2 minutes**

**TB 1555**

# EZ Vane Actuator's Unique Solutions and Benefits



The Easytork Control Actuator line is a game-changing development for the pneumatic actuation and control valve markets. It replaces the rotary spring & diaphragm style actuator's reason for existence. **Compared to RS&D, the EZ has better accuracy and is more economical, 1/10th to 1/4th the weight, 1/6th to 2/3rd the size, and consumes 1/4th to 1/2 the air consumption.**

## Predictive Maintenance

### Using internal air reservoir for fail-safe

Air reservoirs in fail-safe systems are commonly used to replace springs for large mission critical emergency shut down valves. Spring failure and its performance decay are common occurrences but are hard to detect. Unlike spring actuation, monitoring devices can be installed onto air reservoir fail-safe actuation systems to positively detect performance decay or failure.

## Product Reliability

### One moving piece – pure rotary-to-rotary movement

EVAs only have one moving part that creates pure rotary-to-rotary movement. Not only does the simplistic design contribute to better lifespan, the singular moving component simplifies predictive maintenance monitoring. Common off the shelf technology provides for validated automatic detection.

## Product Reliability

### Ideal for dirty environments & poor instrument air

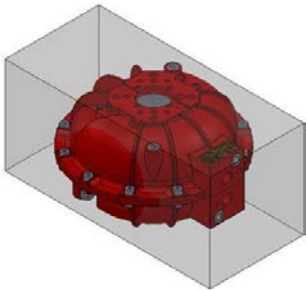
Environmental air never enters the actuator. Unlike springs, air reservoir fail-safe systems never pull in environmental air into actuators. While clean instrument air is important, Easytork's rugged vane handles poor air supply significantly better than traditional actuators.

## Smaller & Lighter than any other actuator

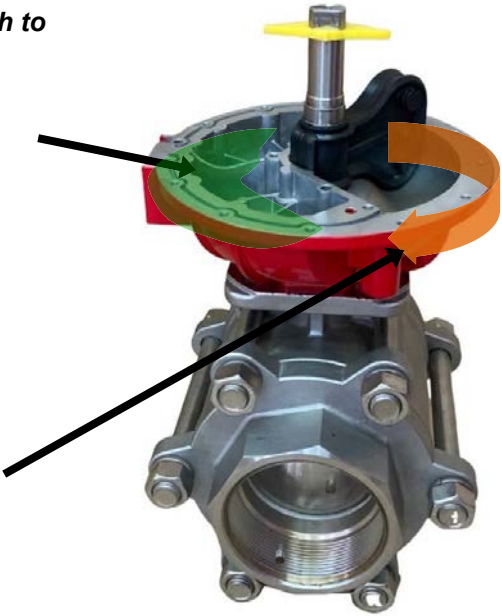
### Smallest and lightest actuator on the market

Spring-return actuators are sized up to compensate for the resistance of the spring, while air reservoir fail-safe actuators do not have to account for spring resistance, as such EVA is the smallest and lightest actuator for any fail-safe application.

Rack & Pinion  
(2 Piston)



Size overlay



EZ Vane actuators are significantly smaller, lighter, faster, and more cost efficient.



## Weight Differential

12" butterfly valve for fail-safe  
**49 lb (~22kg) EVA**  
or  
**120 lb (~54kg)** spring-return rack & pinion

Email: [sales@flotite.com](mailto:sales@flotite.com)  
Main Tel.: 1-910-738-8904

[www.flotite.com](http://www.flotite.com)







## ***Spring Diaphragm Rotary Actuators***

### **AUTOMATOR Series**

#### **Torque Range:**

133 to 12,680 in-lbs

Operated by Air, Water, or  
Mineral-Based Hydraulic Fluid

Quarter-Turn Rotary Actuators

Designed for Ball, Butterfly, & Plug Valves



***IN STOCK!!!***

**[WWW.FLOTITE.COM](http://WWW.FLOTITE.COM)**

**[SALES@FLOTITE.COM](mailto:SALES@FLOTITE.COM)**



Spring Diaphragm Rotary Actuators are Designed  
to be used with minimal pressure.



Automator Actuators are designed for on-off Modulating  
Service in either fail-open or fail-closed models.

#### **Weatherproof Construction:**

The Actuator cover, adapter, and shaft bearings are  
seated and gasketed to provide a weatherproof enclosure.



4815 West 5th St  
Lumberton, N.C. 28358  
[sales@flotite.com](mailto:sales@flotite.com)

PH: 910-738-8904  
[www.airconactuators.com](http://www.airconactuators.com)  
[www.flotite.com](http://www.flotite.com)

## Air-Con SV Direct Mount Solenoids

Custom-designed pilot type valves for use with pneumatic actuators.

### FEATURES:

- NAMUR Direct Mounting Rapid
- response
- Nickel infused aluminum body Optional
- stainless
- Wide selection of three & four way types
- Voltage 12, 24, 120, 220 available
- NEMA 4 & 7

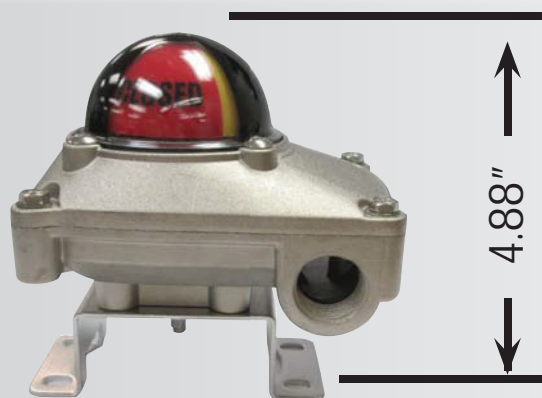


TB 160

## Limit Switch

### ALS Series

Low Cost Compact Design



### ALS II Series

Conventional Size Box

TB 166

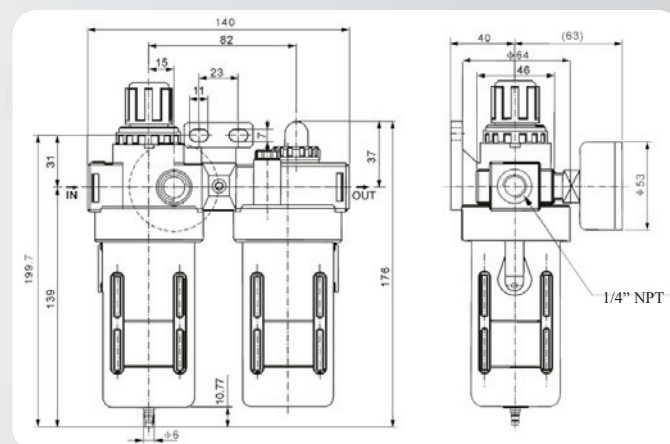


Corrosion Resistance  
Nickel Infused Housing  
Low Profile  
Visual Indication

# Filter Regulator & Lubricator (Air-Set)

## SPECIFICATION

Operating fluid	Air
Joint pipe bore	1/4" NPT
Filtering element micron	40
Range of adjustable pressure	7.25 - 123.28 psi
Max. adjustable pressure	137.8 psi
Ensured pressure resistance	217.5 psi
Operating temperature range	41-140 F
Capacity of filter cup	15 cc
Capacity of oil feel cup	25 cc
Suggested lube	ISO VG 32 or equal
Weight	1.1 lbs
Body material	Aluminum
Container cup material	PE
Protective cup cover material	Iron



Filter regulator units are available in a wide variety of port sizes to meet a broad range of pneumatic air supply filtration, air regulation and compressed air lubrication applications. It includes two parts: filter/regulator and lubricator, but still has three functions: filtration, decompression, and lubricating.

## ISO Square Adapters

Easy - Link's Actuator Inserts are an easy way to mount valves to actuators.

Model  
SQ



TB 150

## Butterfly Valve Spacer Plates

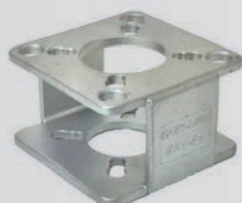


## Easy-Link TB 150

### Precision Engineered Actuator Mounting Brackets

#### Features

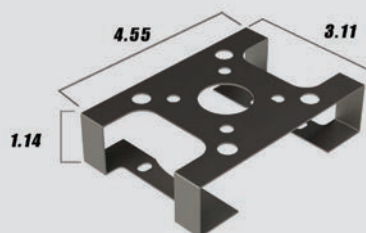
- 12 design built
- Ten different options
- Fits most valves with ISO 5211 mounting bolt holes
- 304 stainless steel or chrome plated carbon steel



## Limit Switch Bracket

Model LS5

Adjustable stainless steel NAMUR Limit Switch Brackets are designed to directly interface with NAMUR standards





## Easy-Link

TB 150

Custom Designed Actuator Drive Couplers (from 9 to 46 mm)

Actuator Drive  
Blank Coupler



ISO Square  
Encapsulated Design



ISO Square  
Open Slot



## Indicator Series

TB 165

Highly Visual Position Indicator  
mounts to Pneumatic Actuators  
with NAMUR standards



*Offering a wide selection of options.*

Indicators for 90° / Quarter-Turn Valves

Type (open/closed)	Code	Open	Closed
Black / Yellow	Y		
Full Green / Full Red	A		
Full Red / Full Green	B		
ANSI Red / White	R		
ANSI Green / White	G		
ANSI Blue / White	B		

Indicators for Multi-Port Valves (90°)

Type	Code	Position 1	Position 2	Views	Position 1	Position 2
3-way Path O	O			or		
3-way Path T	T			or		
Note: Four Viewing Configurations Possible						
3-way Path F	F			or		
Note: Four Viewing Configurations Possible						
4-way Path S	S			or		



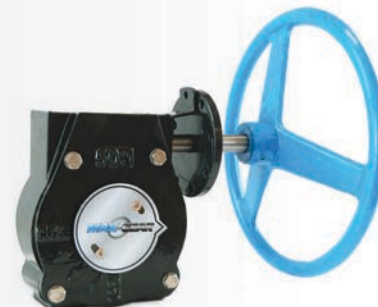
## Manual Worm Gear Operators



TB 151



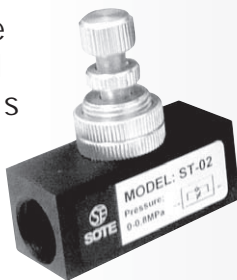
TB 151



## Speed Control Valve TB 158

### Silencer, Muffler, Bug Screen, Breather Vent

In-line  
Speed  
Controls



An adjustable needle valve provides metered air flow with the adjustable pressure reducing feature

Speed Controls  
& Muffler  
Combination



Silencer  
Muffler



Bug Screen  
Breather Vent



### Flexible Stainless Steel Hose



TB 158

### Hard Stainless Steel Pipe



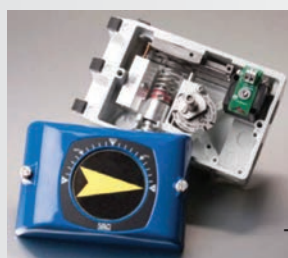
## Positioners

TB 168

**Flo-Tite Series V200:** This is our compact NEMA 4X "all-in-one housing" offered in a pneumatic or electro-pneumatic version. It provides a complete modular design utilizing a rugged, die cast aluminum housing. It is easy to calibrate and both the Zero and Span can be adjusted without removing the cover. This unit provides many options, such as a standard I/P, IS, EX, and others. It also offers a position feedback option in the all-in-one modular housing.



**Flo-Tite Series D400:** Our microprocessor based, "intelligent" or "smart" positioner can easily be mounted to a vast offering of pneumatic actuators for accurate valve control. This unit is simple to mount and calibrate with its local push-button calibration and LCD onboard monitoring. With properly filtered air, the D400 can provide extremely accurate and trouble-free service for many years. It's available in Hart, Foundation Fieldbus, or Profibus Communications.



TB 169



4815 West 5th St  
Lumberton, N.C. 28358  
sales@flotite.com

PH: 910-738-8904  
www.airconactuators.com  
www.flotite.com