



## Low Profile - Compact Limit Switch

### Cost Effective Solution

The compact ALS Series Rotary Limit Switch enclosure provides both visual and remote electrical indication of valve position.



#### **Corrosive Environment**

Our standard housing is offered nickel infused.

#### **Inclusive Mounting Bracket**

The bracket is supplied as standard to actuators with NAMUR top-mounting.

#### **High Visibility Indicator**

The compact ALS limit switch is designed for applications where space, weight, and cost are of major concern.

#### **Captive Cover Screws**

The screws permit cover removal without potential of losing

screws.

#### **Low Profile**

Compact Body Design



Compact Limit Switch  
STANDARD PRODUCT NUMBER

**ALS210**

**ALS310**

### Variety of Indicator Dome Selections



A



B



C



D



E



F

Ideal, Economical, Manual Limit Switch for quarter turn valves. When position indication of the valve is required at the valve or at a remote location, Flo-Tite's ALS Series is an ideal choice.

Applications for these units include the control of signaling devices, panel lights, and visual indication of the valve position.



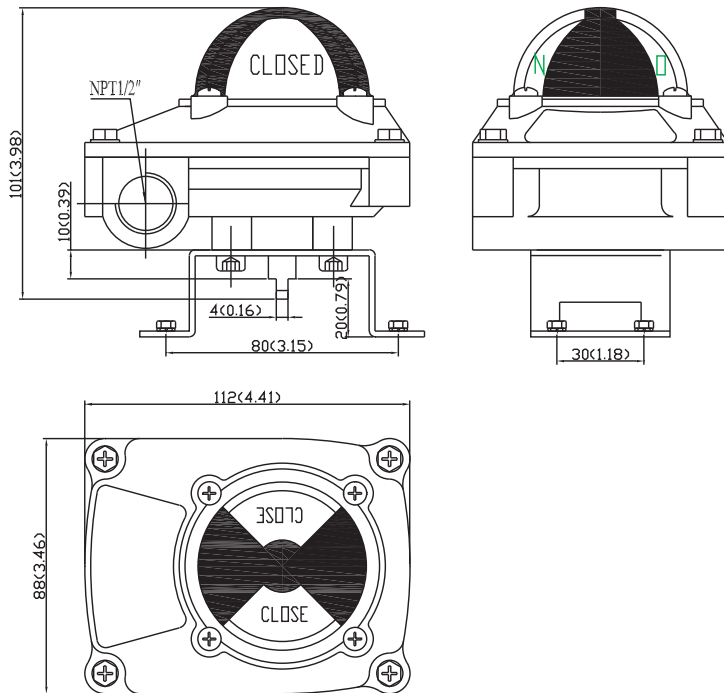
Model #

Small Housing ALS-210

Large Housing ALS-310

# Technical Data

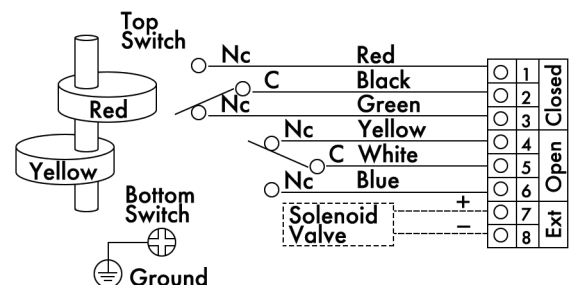
## Flo-Tite's ALS Series Limit Switch



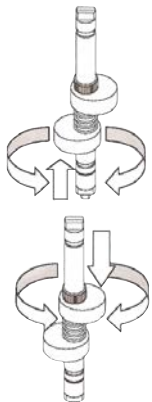
### Specifications

Enclosure	Die-cast aluminum, Nickel infused
	IP67, Type 4, 4x
Weather proof	N/A
Area Classification	Buna-N O-Ring
Sealed	(2) SPDT Honeywell Mechanical Switches
Sensor(M2)	5A125-250VAC
	90° Yellow (open) Red (closed) indicator
Visual Display	304 Stainless Steel Namur Shaft
Shaft	(2) 1/2" NPT conduit entries
Conduit Entries	(Optional, 1/2" BSPP, M20-1.5)
Mounting Bracket	MB-1.0: 30 x 80 H:20, (Stainless Steel)
	30 x 80 H:30, (CS plated)
Temperature Rating	-15°F--185°F

### Wiring Diagram



### Limit Switch Adjustment



1. Loosen limit switch box cover screws and remove cover.
2. Rotate actuator to full counterclockwise position. Valve is in fully open or closed position.
3. Lift up bottom cam and turn until switch is activated and then release. Engage cam back onto the splined retainer. Spring will maintain cam engagement.
4. Rotate actuator to full clockwise position. Valve is in fully closed or open position.
5. Push down top cam and turn until switch is activated and then release. Engage cam back onto the splined retainer. Spring will maintain cam engagement.
6. Place cover on limit switch box and tighten. Take care to ensure that housing O-ring is properly located in seal groove.



Flo-Tite, Inc.  
4815 West 5th St.  
Lumberton, NC 28358

P. O. Box 1293  
Lumberton, NC 28359  
Website: [www.flotite.com](http://www.flotite.com)

Tel: (910) 738-8904  
Fax: (910) 738-9112  
E-mail: [sales@flotite.com](mailto:sales@flotite.com)

This brochure is general in nature and manufacturer reserves the right to alter dimensions, materials or to make design improvements.

***Limit Switch units to be calibrated in the field unless specified on the order.***