



Direct Mount Ball Valve

2 Piece • Full Port • Threaded Connection • 600 WOG •
ISO Mounting Pad • Stainless Steel Ball and Stem



DM-52

Features

- Dezincification resistant alloy
- ISO 5211 direct mounting pad
- Square valve stem for direct mounting to any ISO actuator
- Blow out proof stem
- Latch lock may be locked in open or closed position
- 100% leak tested
- Wetted surface contains less than .25% lead content

Approvals

- NSF 61-8
- NSF 372
- MSS SP-110
- ANSI B1.20.1
- RoHS Compliant

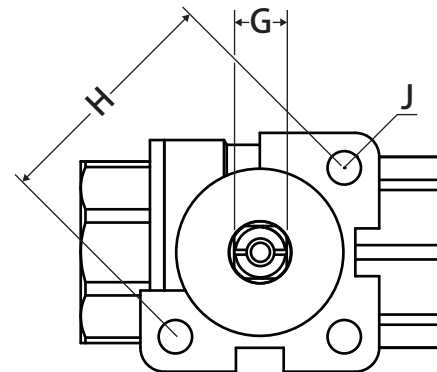
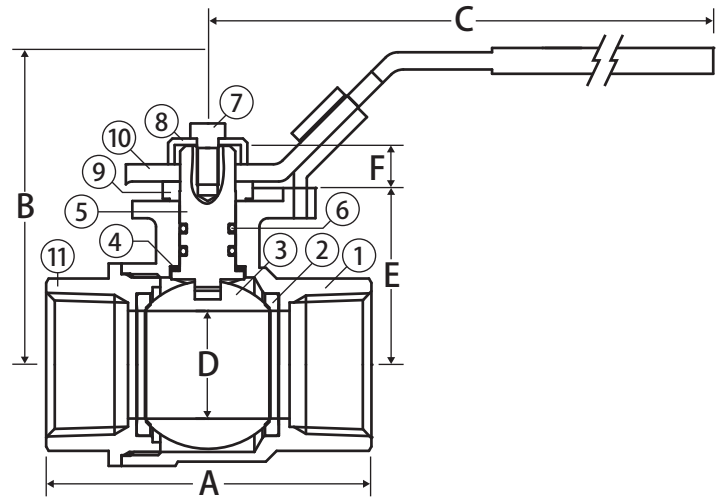
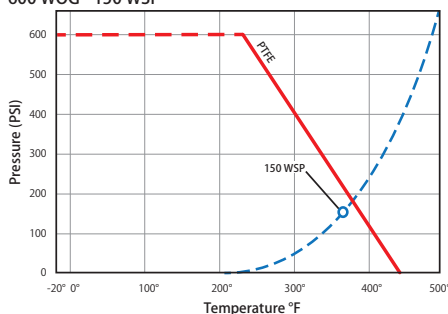


WARNING: This product can expose you to chemicals including lead, which is known to the State of California to cause cancer, and lead, which is known to the State of California to cause birth defects or other reproductive harm.

For more information go to www.P65Warnings.ca.gov.

Valve Seat Rating

600 WOG - 150 WSP



Material Specifications

No.	Part	Materials
1	Body	Lead Free Brass - C46500
2	Seat (2)	PTFE
3	Ball	304 Stainless Steel
4	Stem Seat	PTFE
5	Stem	304 Stainless Steel
6	O-ring (2)	Viton®
7	Screw	Nickel Plated Steel
8	Packing Nut	Nickel Plated Brass - C37700
9	Gasket	Nylon
10	Handle	Chrome Plated Steel
11	End Connection	Lead Free Brass

Dimensions

Size	A	B	C	D	E	F	G	H	J	ISO	Torque
1/2"	2.39	2.34	4.76	0.59	1.14	0.37	0.35	1.42	0.23	F03	16
3/4"	2.57	2.48	4.76	0.75	1.28	0.37	0.35	1.42	0.23	F03	23
1"	2.97	2.85	6.73	0.98	1.59	0.39	0.43	1.97	0.28	F05	36
1-1/4"	3.44	3.15	6.73	1.26	1.82	0.39	0.43	1.97	0.28	F05	73
1-1/2"	3.88	3.64	6.73	1.57	2.32	0.43	0.43	1.97	0.28	F05	76
2"	4.29	3.94	6.73	1.94	2.62	0.43	0.43	1.97	0.28	F05	130

Note: Torque is in (in-lb)

Products are constructed without silicone containing material and are assembled using silicone-free grease. SALES@FLOTITE.COM 910-738-8904 WWW.FLOTITE.COM