



# MAX-SEAL UPGRADE!

Max-Seal's Performance Series of resilient seated BFV, over ten years of great performance in high pressure applications - trouble-free performance.

## Current Rated Pressure Size

2"-12" 200/wog	2"-12" 225/wog
14"-20" 175/wog	14"-24" 200/wog

## New Pressure Rated

All size valves have been tested up to 275 & 250 PSIG.

## Body Style

Lug design model 52.

## Body Material

Ductile iron-rugged heavy duty casting.

## Valve Stem

High strength 17-4ph ss

## Seat

Field replaceable phenolic-bonded cartridge, field replaceable.

## Dead-end Services

Lug type body, standard design.

*Ideal design incorporates a unique machined "step" into the valve body. This step will positively retain the valve seat and prevent seat blow-out.*

## Vacuum Service

Provided up to 28 inches of Hg.

## Actuator Mounting

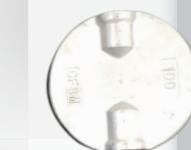
ISO-5211

Top flange. All valve stems are ISO square design

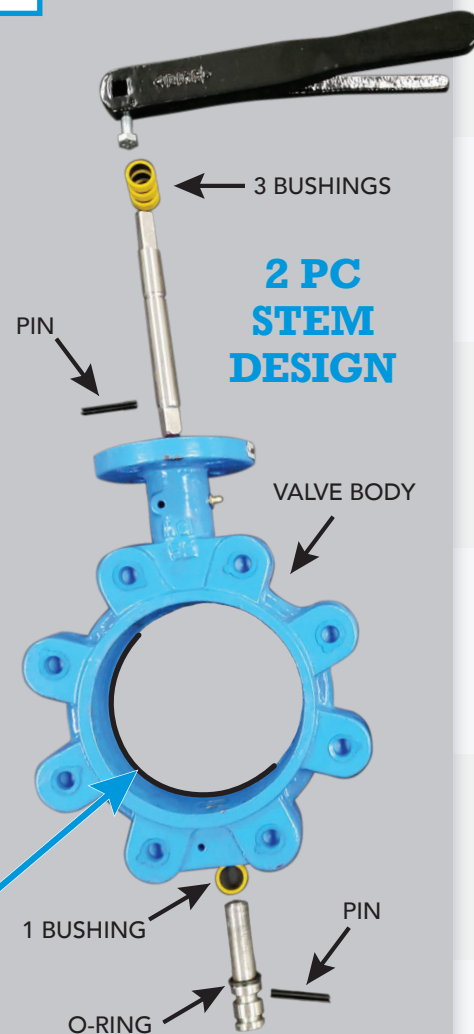
O-RINGS are molded in the seat on the top and bottom



SEAT



HIGH FLOW DISC DESIGN



**NOT JUST  
ANOTHER  
BOOT SEATED  
VALVE!**

## SEAT MATERIAL OFFERING

- EPDM
- Viton
- Buna
- Teflon

Food Grade Options