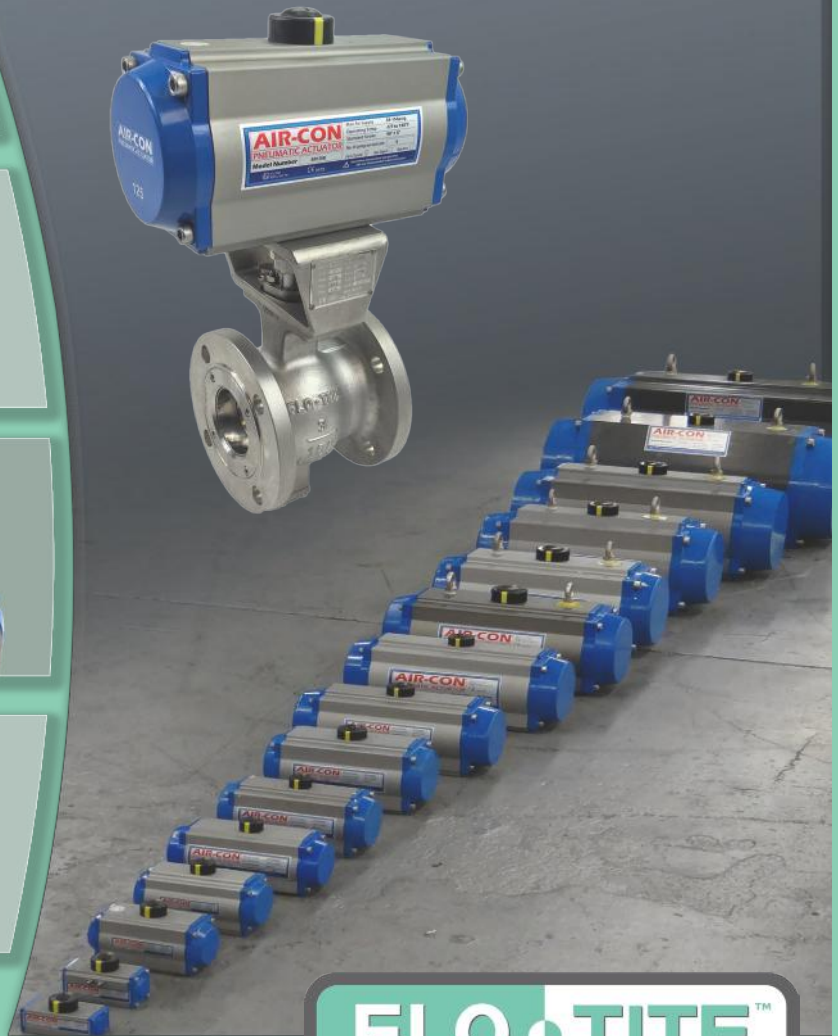
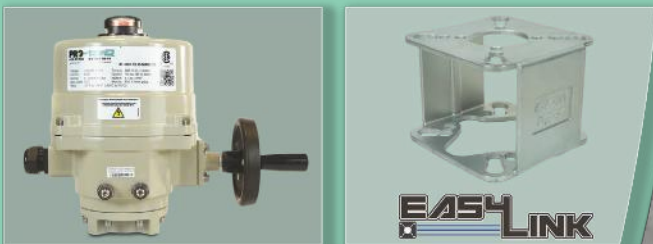


AIR-CON Offers full line of Actuators and Accessories.

Extended Range Series

**World's largest size Rack & Pinion
Torque Range : 115,000 - 1,565,200 Inch Lbs**



**Size Ranging from 55 lbf-in
to 80887 lbf-in**



2022 Quick Reference Sizing Guide for Automated Valve Packages

Flo-Tite and Max-Seal's 30+ years of experience in sizing and actuating all types of ball and butterfly valves has allowed us to create this comprehensive price list of actuated valve assemblies.

This assembled unit pricing includes properly designed and sized brackets, couplers, and pneumatic or electric actuators.

www.flotite.com

Table of Content

Multi-Choice 200/300 with Spring Return and Double Acting Actuator	Pg 1
F150CS/SS Full Flo Series with Spring Return and Double Acting Actuator	Pg 2
RF15CS/SS and RF30CS/SS with Spring Return and Double Acting Actuator	Pg 3
SF150CS/SS UNI-FLO Series with Spring Return and Double Acting Actuator	Pg 4
F300CS/SS Full Flo Series with Spring Return and Double Acting Actuator	Pg 5
HPF51/52SS Tri-Pro Series with Spring Return and Double Acting Actuator	Pg 6
HPF41/42 CS Tri-Pro Series with Spring Return and Double Acting Actuator	Pg 7
HPS51/52SS Tri-Pro Series with Spring Return and Double Acting Actuator	Pg 8
HPS41/42CS Tri-Pro Series with Spring Return and Double Acting Actuator	Pg 8
S23CS/SS Fusion Series with Spring Return and Double Acting Actuator	Pg 9
T23CS/SS Fusion Series with Spring Return and Double Acting Actuator	Pg 10
MPT100-L/T-SS Multi-Port Series with Spring Return and Double Acting Actuator	Pg 10
MPF15SS Multi-Port Series with Spring Return and Double Acting Actuator	Pg 11
W150SS and WF150SS with Spring Return and Double Acting Actuator	Pg 12
Valve with Carbon TFM (Y) or 50/50 Stainless Teflon (s)	
F150CS/SS Full Flo Series with Spring Return and Double Acting Actuator	Pg 12
F300CS/SS Full Flo Series with Spring Return and Double Acting Actuator	Pg 13
MPF15SS/CS Multi-Port Series with S Ring Return and Double Acting Actuator	Pg 14
DM300SS Direct Mount Automation Series with Spring Return and Double Acting Actuator	Pg 15
DM85SS Direct Mount Automation Series with Spring Return and Double Acting Actuator	Pg 16
DMF15SS Direct Mount Automation Series with Spring Return and Double Acting Actuator	Pg 16
DM51BZ Direct Mount Brass Ball Series with Spring Return and Double Acting Actuator	Pg 16
DM2000 Direct Mount Series with Spring Return and Double Acting Actuator	Pg 17
Valves with Electric Motor Actuator	
F150CS/SS Full Flo Series with Electric Motor Actuator	Pg 17
F300CS/SS Full Flo Series with Electric Motor Actuator	Pg 17
SF150CS/SS UNI-FLO Series with Electric Motor Actuator	Pg 18
W150SS and WF150SS with Electric Motor Actuator	Pg 18
MPF15SS/CS and MPF30SS/CS Multi-Port Series with Electric Motor Actuator	Pg 19
MPT100-L/T-SS Multi-Port Series with Electric Motor Actuator	Pg 20
HPF51/52SS Tri-Pro Series with Electric Motor Actuator	Pg 20
HPF41/42CS Tri-Pro Series with Electric Motor Actuator	Pg 21
HPF56SS Tri-Pro Series with Electric Motor Actuator	Pg 21
HPF46CS Tri-Pro Series with Electric Motor Actuator	Pg 21
Multi-Choice 200/300 with Electric Motor Actuator	Pg 22
Multi-Choice 325/335SL with Electric Motor Actuator	Pg 22
Multi-Choice 225/235 TFM with Electric Motor Actuator	Pg 22
Multi-Choice 225/235CS with Electric Motor Actuator	Pg 22
Multi-Choice 350/370SS with Electric Motor Actuator	Pg 23
S23SS/CS Fusion Series with Electric Motor Actuator	Pg 23
T23SS/CS Fusion Series with Electric Motor Actuator	Pg 23
DM310SS and DM320SS Direct Mount Series with Electric Motor Actuator	Pg 23
DM85SS/CS Direct Mount Series with Electric Motor Actuator	Pg 23
DM51/52BZ Brass Direct Mount Series with Electric Motor Actuator	Pg 24
DM-MPT100S4 Multi Port Series with Electric Motor Actuator	Pg 24
MPT355BZ and MPT365BZ Multi Port Series with Electric Motor Actuator	Pg 24

Option Adders to list price:

Limit Switch

MODEL	NOTE
FMYB - 5120 NEMA 4	With Visual Indicator
AMYB - 5120 NEMA 7	With Visual Indicator
FFNB - 5120 NEMA 4	Without Visual Indicator
ALS COMPACT SERIES	NEMA - 4 / with Indicator
ALS-II (Standard Box)	NEMA - 4 / with Indicator

Positioners

MODEL	TYPE
VP700-G	Pneumatic 3-15 psi
VE700-G	Electro Pneumatic 4-20 mA
VAC-400	Digital Positioner
YT1000	Electro Pneumatic 4-20 mA

The prices in this price list will be for either a 25% carbon TFM (Y) or 50/50 Stainless Teflon (S)
 Seats List price on this sheet includes seat change out
 Consult factory for application assistance
 All units are assembled and tested.

User Friendly, Accurate, Quick & Easy

Automation sizing and price list for Flo-Tite Valves.

Differential pressure, seat material, media type and temperature will affect actuator sizing.
 Flo-Tite actuator selections are based on valves with standard seats and clean fluid only at ambient temperatures PSI and rated system pressures not to exceed 800.

All units are assembled and tested

3PC 300 MULTI-CHOICE SERIES WITH SPRING RETURN ACTUATOR

300 Series with SR @80PSI	300 Series with SR@60PSI
½" 300SS-SR52.12	½" 300SS-SR63.8
¾" 300SS-SR63.12	¾" 300SS-SR63.9
1" 300SS-SR63.12	1" 300SS-SR75.9
1 ¼" 300SS-SR83.12	1 ¼" 300SS-SR83.10
1 ½" 300SS-SR83.12	1 ½" 300SS-SR92.9
2" 300SS-SR92.12	2" 300SS-SR105.8
2 ½" 300SS-SR105.12	2 ½" 300SS-SR125.9
3" 300SS-SR125.12	3" 300SS-SR140.8
4" 300SS-SR140.12	4" 300SS-SR160.10

3PC 300 MULTI-CHOICE SERIES WITH DOUBLE ACTING ACTUATOR

300 Series with DA@80PSI	300 Series w/ DA@60PSI
½" 300SS-DA40	½" 300SS-DA40
¾" 300SS-DA52	¾" 300SS-DA52
1" 300SS-DA52	1" 300SS-DA52
1 ¼" 300SS-DA63	1 ¼" 300SS-DA75
1 ½" 300SS-DA63	1 ½" 300SS-DA75
2" 300SS-DA75	2" 300SS-DA83
2 ½" 300SS-DA92	2 ½" 300SS-DA92
3" 300SS-DA92	3" 300SS-DA105
4" 300SS-DA125	4" 300SS-DA125

200 Series with SR@80PSI	200 Series with SR@60PSI
½" 200CS-SR52.12	½" 200CS- SR63.8
¾" 200CS-SR63.12	¾" 200CS-SR63.9
1" 200CS-SR63.12	1" 200CS-SR75.9
1 ¼" 200CS-SR83.12	1 ¼" 200CS-SR83.10
1 ½" 200CS-SR83.12	1 ½" 200CS-SR92.9
2" 200CS-SR92.12	2" 200CS-SR105.8
2 ½" 200CS-SR105.12	2 ½" 200CS-SR125.9
3" 200CS-SR125.12	3" 200CS-SR140.8
4" 200CS-SR140.12	4" 200CS-SR160.10

3PC 200 MULTI-CHOICE SERIES WITH DOUBLE ACTING ACTUATOR

200 Series with DA@80PSI	200 Series w/ DA@60PSI
½" 200CS-DA40	½" 200CS-DA40
¾" 200CS-DA52	¾" 200CS-DA52
1" 200CS-DA52	1" 200CS-DA52
1 ¼" 200CS-DA63	1 ¼" 200CS-DA75
1 ½" 200CS-DA63	1 ½" 200CS-DA75
2" 200CS-DA75	2" 200CS-DA83
2 ½" 200CS-DA92	2 ½" 200CS-DA92
3" 200CS-DA92	3" 200CS-DA105
4" 200CS-DA125	4" 200CS-DA125

2PC Flanged End Full Port Ball Valves

F150SS FULL FLO SERIES WITH SPRING RETURN ACTUATOR

F150SS W/ SR@80PSI	F150SS W/ SR@60PSI
½" F150SS-SR52.12	½" F150SS-SR63.8
¾" F150SS-SR63.12	¾" F150SS-SR63.9
1" F150SS-SR63.12	1" F150SS-SR75.9
1 ¼" F150SS-SR83.12	1 ¼" F150SS-SR83.10
1 ½" F150SS-SR83.12	1 ½" F150SS-SR92.9
2" F150SS-SR92.12	2" F150SS-SR105.8
2 ½" F150SS-SR105.12	2 ½" F150SS-SR125.9
3" F150SS-SR125.12	3" F150SS-SR140.8
4" F150SS-SR140.12	4" F150SS-SR160.8
6" F150SS-SR210.12	6" F150SS-SR240.8
8" F150SS-SR270.12	8" F150SS-B-SR300.9

F150SS FULL FLO SERIES WITH DOUBLE ACTING ACTUATOR

F150SS W/ DA@80PSI	F150SS W/ DA@60PSI
½" F150SS-DA40	½" F150SS- DA40
¾" F150SS-DA52	¾" F150SS-DA52
1" F150SS-DA52	1" F150S-DA52
1 ¼" F150SS-DA63	1 ¼" F150SS-DA63
1 ½" F150SS-DA63	1 ½" F150SS-DA75
2" F150SS-DA75	2" F150SS-C-DA83
2 ½" F150SS-DA92	2 ½" F150SS-DA92
3" F150SS-DA92	3" F150S-DA105
4" F150SS-DA125	4" F150SS-DA125
6" F150SS-DA160	6" F150SS-DA190
8" F150SS-DA210	8" F150SS-DA240
10" F150SS-DA240	10" F150SS-DA270
12" F150SS-DA270	12" F150SS-DA270

F150CS W/ SR@80PSI	F150CS W/ SR@60PSI
½" F150CS-SR52.12	½" F150CS- SR63.8
¾" F150CS-SR63.12	¾" F150CS-SR63.9
1" F150CS-SR63.12	1" F150CS-SR75.9
1 ½" F150CS-SR83.12	1 ½" F150CS-SR92.9
2" F150CS-SR92.12	2" F150CS-SR105.8
2 ½" F150CS-SR105.12	2 ½" F150CS-SR125.9
3" F150CS-SR125.12	3" F150CS-SR140.8
4" F150CS-SR140.12	4" F150CS-SR160.8
6" F150CS-SR210.12	6" F150CS-SR240.8
8" F150CS-SR270.12	8" F150CS-B-SR300.9

F150CS FULL FLO SERIES WITH DOUBLE ACTING ACTUATOR

F150CS W/ DA@80PSI	F150CS W/ DA@60PSI
½" F150CS- DA40	½" F150CS- DA40
¾" F150CS-DA52	¾" F150CS-DA52
1" F150CS-DA52	1" F150CS-DA52
1 ½" F150CS-DA63	1 ½" F150CS-DA75
2" F150CS-DA75	2" F150CS-DA83
2 ½" F150CS-DA92	2 ½" F150CS-DA92
3" F150CS-DA92	3" F150CS-DA105
4" F150CS-DA125	4" F150CS-DA125
6" F150CS-DA160	6" F150CS-DA190
8" F150CS-DA210	8" F150CS-DA240
10" F150CS-DA240	10" F150C-DA270
12" F150CS-DA270	12" F150CS-DA270

2PC Reduced Port Ball Valves

EZ SERIES/RF15SS SERIES WITH SPRING RETURN ACTUATOR

RF15SS W/ SR@80PSI	RF15SS W/ SR@60PSI
3" RF15-SS-SR105.12	3" RF15-SS-SR125.8
4" RF15-SS-SR125.12	4" RF15-SS-SR140.8
6" RF15-SS-SR140.12	6" RF15-SS-SR160.8
8" RF15-SS-SR210.12	8" RF15-SS-SR210.10
10" RF15-SS-SR270.12	10" RF15-SS-SR270.10
12" RF15-SS-SR300.12	12" RF15-SS-B-SR350.8

EZ SERIES/RF15SS WITH DOUBLE ACTING ACTUATOR

RF15SS W/ DA@80PSI	RF15SS W/ DA@60PSI
3" RF15-SS-DA92	3" RF15-SS-DA105
4" RF15-SS-DA105	4" RF15-SS-DA125
6" RF15-SS-DA125	6" RF15-SS-DA140
8" RF15-SS-DA160	8" RF15-SS-DA160
10" RF15-SS-DA240	10" RF15-SS-DA240
12" RF15-SS-DA270	12" RF15-SS-DA270

EZ SERIES/RF15CS SERIES WITH SPRING RETURN ACTUATOR

RF15CS W/ SR@80PSI	RF15SS W/ SR@60PSI
3" RF15-CS-SR105.12	3" RF15-CS-SR125.8
4" RF15-CS-SR125.12	4" RF15-CS-SR140.8
6" RF15-CS-SR140.12	6" RF15-CS-SR160.8
8" RF15-CS-SR210.12	8" RF15-CS-SR210.10
10" RF15-CS-SR270.12	10" RF15-CS-SR270.10
12" RF15-CS-SR300.12	12" RF15-CS-B-SR350.8

EZ SERIES/RF15CS WITH DOUBLE ACTING ACTUATOR

RF15CS W/ DA@80PSI	RF15CS W/ DA@60PSI
3" RF15-CS-DA92	3" RF15-CS-DA105
4" RF15-CS-DA105	4" RF15-CS-DA125
6" RF15-CS-DA125	6" RF15-CS-DA140
8" RF15-CS-DA160	8" RF15-CS-DA160
10" RF15-CS-DA240	10" RF15-CS-DA240
12" RF15-CS-DA270	12" RF15-CS-DA270

EZ SERIES/RF30SS SERIES WITH SPRING RETURN ACTUATOR

RF30SS W/ SR@80PSI	RF30SS W/ SR@60PSI
3" RF30-SS-SR105.12	3" RF30-SS-SR125.8
4" RF30-SS-SR125.12	4" RF30-SS-SR140.8
6" RF30-SS-SR140.12	6" RF30-SS-SR160.8
8" RF30-SS-SR210.12	8" RF30-SS-SR210.10

EZ SERIES/RF30SS WITH DOUBLE ACTING ACTUATOR

RF30SS W/ DA@80PSI	RF30SS W/ DA@60PSI
3" RF30-SS-DA92	3" RF30-SS-DA92
4" RF30-SS-DA92	4" RF30-SS-DA105
6" RF30-SS-DA125	6" RF30-SS-DA125
8" RF30-SS-DA160	8" RF30-SS-DA190

EZ SERIES/RF30CS SERIES WITH SPRING RETURN ACTUATOR

RF30CS W/ SR@80PSI	RF30SS W/ SR@60PSI
3" RF30-CS-SR105.12	3" RF30-CS-SR125.8
4" RF30-CS-SR125.12	4" RF30-CS-SR140.8
6" RF30-CS-SR140.12	6" RF30-CS-SR160.8
8" RF30-CS-SR210.12	8" RF30-CS-SR240.8

EZ SERIES/RF30CS WITH DOUBLE ACTING ACTUATOR

RF30CS W/ DA@80PSI	RF30CS W/ DA@60PSI
3" RF30-CS-DA92	3" RF30-CS-DA92
4" RF30-CS-DA105	4" RF30-CS-DA105
6" RF30-CS-DA125	6" RF30-CS-DA125
8" RF30-CS-DA160	8" RF30-CS-DA190

1PC Reduced Port Ball Valve

SF150CS UNI-FLO SERIES WITH SPRING RETURN ACTUATOR

SF150CS W/ SR@80PSI	SF150CS W/ SR@60PSI
2" SF150CS-SR83.12	2" SF150CS-SR92.8
3" SF150CS-SR105.12	3" SF150CS-SR125.8
4" SF150CS-SR125.12	4" SF150CS-SR140.8
6" SF150CS-SR140.12	6" SF150CS-SR160.8
8" SF150CS-SR210.12	8" SF150CS-SR210.10
10" SF150CS-SR270.12	10" SF150CS-SR270.10
12" SF150CS-B-SR350.12	12" SF150CS-B-SR350.8

SF150CS W/ DA@80PSI	SF150CS W/ DA@60PSI
2" SF150CS- DA75	2" SF150CS- DA83
3" SF150CS-DA92	3" SF150CS-DA105
4" SF150CS-DA105	4" SF150CS-DA125
6" SF150CS-DA125	6" SF150CS-DA140
8" SF150CS-DA160	8" SF150CS-DA160
10" SF150CS-DA240	10" SF150CS-DA240
12" SF150CS-DA270	12" SF150CS-DA270

SF150SS UNI-FLO SERIES WITH SPRING RETURN ACTUATOR

SF150SS W/ SR@80PSI	SF150SS W/ SR@60PSI
2" SF150SS- SR83.12	2" SF150SS- SR92.8
3" SF150SS-SR105.12	3" SF150SS-SR125.8
4" SF150SS-SR125.12	4" SF150SS-SR140.8
6" SF150SS-SR140.12	6" SF150SS-SR160.8
8" SF150SS-SR210.12	8" SF150SS-SR210.10
10"SF150SS-SR270.12	10" SF150SS-SR270.10
12" SF150SS-B-SR350.12	12" SF150SS-B-SR350.8

SF150SS UNI-FLO SERIES WITH DOUBLE ACTING ACTUATOR

SF150SS W/ DA@80PSI	SF150SS W/ DA@60PSI
2" SF150SS-DA75	2" SF150SS- DA83
3" SF150SS-DA92	3" SF150SS-DA105
4" SF150SS-DA105	4" SF150SS-DA125
6" SF150SS-DA125	6" SF150SS-DA140
8" SF150SS-DA160	8" SF150SS-DA160
10" SF150SS-DA240	10" SF150SS-DA240
12" SF150SS-DA270	12" SF150SS-DA270

2PC Flanged End Full Port Valves

F300SS FULL FLO SERIES WITH SPRING RETURN ACTUATOR

F300SS W/ SR@80PSI	F300SS W/ SR@60PSI
½" F300SS-SR52.12	½" F300SS-SR63.8
¾" F300SS-SR63.12	¾" F300SS-SR63.9
1" F300SS-SR63.12	1" F300SS-SR75.9
1 ½" F300SS-SR83.12	1 ½" F300SS-SR92.9
2" F300SS-SR92.12	2" F300SS-SR105.8
2 ½" F300SS-SR125.12	2 ½" F300SS-SR125.9
3" F300SS-SR125.12	3" F300SS-SR140.8
4" F300SS-SR140.12	4" F300SS-SR160.8
6" F300SS-SR210.12	6" F300SS-SR240.8

F300SS FULL FLO SERIES WITH DOUBLE ACTING ACTUATOR

F300SS W/ DA@80PSI	F300SS W/ DA@60PSI
½" F300SS-DA52	½" F300SS-DA52
¾" F300SS-DA52	¾" F300SS-DA52
1" F300SS-DA52	" F300SS-DA52
1 ½" F300SS-DA63	1 ½" F300SS-DA75
2" F300SS-DA75	2" F300SS-DA83
2 ½" F300SS-DA92	2 ½" F300SS-DA92
3" F300SS-DA92	3" F300SS-DA105
4" F300SS-DA125	4" F300SS-DA125
6" F300SS-DA160	6" F300SS-DA190
8" F300SS-DA210	8" F300SS-DA240
10" F300SS-DA240	10" F300SS-DA270
12" F300SS-DA270	12" F300SS-B-DA300

F300CS W/ SR@80PSI	F300CS W/ SR@60PSI
½" F300CS- SR52.12	½" F300CS-SR63.8
¾" F300CS-SR63.12	¾" F300CS-SR63.9
1" F300CS-SR63.12	1" F300CS-SR75.9
1 ½" F300CS-SR83.12	1 ½" F300CS-SR92.9
2" F300CS-SR92.12	2" F300CS-SR105.8
2 ½" F300CS-SR125.12	2 ½" F300CS-SR125.9
3" F300CS-SR125.12	3" F300CS-SR140.8
4" F300CS-SR140.12	4" F300CS-SR160.8
6" F300CS-SR210.12	6" F300CS-SR240.8

F300CS FULL FLO SERIES WITH DOUBLE ACTING ACTUATOR

F300SS W/ DA@80PSI	F300SS W/ DA@60PSI
½" F300CS-DA52	½" F300CS-DA52
¾" F300CS -DA52	¾" F300CS-DA52
1" F300CS -DA52	1" F300SS-DA52
1 ½" F300CS-DA63	1 ½" F300CS-DA75
2" F300CS-DA75	2" F300CS-DA83
2 ½" F300CS-DA92	2 ½" F300CS-DA92
3" F300CS-DA92	3" F300CS-DA105
4" F300CS-DA125	4" F300CS-DA125
6" F300CS-DA160	6" F300CS-DA190
8" F300CS-DA210	8" F300CS-DA240
10" F300CS-DA240	10" F300CS-DA270
12" F300CS-DA270	12" F300CS-B-DA300

3PC Tri-Pro Ball Valve

HPF51SS TRI-PRO SERIES WITH SPRING RETURN ACTUATOR

HPF51SS W/ SR@80PSI	HPF51 W/ SR@60PSI
½" HPF51SS- SR63.12	½" HPF51SS-SR63.9
¾" HPF51SS-SR63.12	¾" HPF51SS-SR75.9
1" HPF51SS-SR75.12	1" HPF51SS-SR83.8
1 ¼" HPF51SS-SR83.12	1 ¼" HPF51SS-SR92.8
1 ½" HPF51SS-SR92.12	1 ½" HPF51SS-SR105.9
2" HPF51SS-SR105.12	2" HPF51SS-SR125.8
3" HPF51SS-SR140.12	3" HPF51SS-SR140.11

HPF51 TRI-PRO SERIES WITH DOUBLE ACTING ACTUATOR

HPF51 W/ DA@80PSI	HPF51 W/ DA@60PSI
½" HPF51SS-DA40	½" HPF51SS-DA52
¾" HPF51SS-DA52	¾" HPF51SS-DA63
1" HPF51SS-DA63	1" HPF51SS-DA63
1 ¼" HPF51SS-DA75	1 ¼" HPF51SS-DA75
1 ½" HPF51SS-DA83	1 ½" HPF51SS-DA83
2" HPF51SS-DA83	2" HPF51SS-DA92
3" HPF51SS-DA105	3" HPF51SS-DA125

HPF52 TRI-PRO SERIES WITH SPRING RETURN ACTUATOR

HPF52 W/ SR@80PSI	HPF52 W SR@60PSI
½" HPF52SS- SR63.12	½" HPF52SS-SR63.9
¾" HPF52SS-SR63.12	¾" HPF52SS-SR75.9
1" HPF52SS-SR75.12	1" HPF52SS-SR83.9
1 ¼" HPF52SS-SR83.12	1 ¼" HPF52SS-SR92.8
1 ½" HPF52SS-SR92.12	1 ½" HPF52SS-SR105.9
2" HPF52SS-SR105.12	2" HPF52SS-SR125.8
3" HPF52SS-SR140.12	3" HPF52SS-SR140.11

HPF52 W/ DA@80PSI	HPF52 W/ DA@60PSI
½" HPF52SS-DA40	½" HPF52SS-DA52
¾" HPF52SS-DA52	¾" HPF52SS-DA63
1" HPF52SS-DA63	1" HPF52SS-DA63
1 ¼" HPF52SS-DA75	1 ¼" HPF52SS-DA75
1 ½" HPF52SS-DA83	1 ½" HPF52SS-DA83
2" HPF52SS-DA83	2" HPF52SS-DA92
3" HPF52SS-DA105	3" HPF52SS-DA125

HPF41 TRI-PRO SERIES WITH SPRING RETURN ACTUATOR

HPF41 W/ SR@80PSI	HPF41 W/ SR@60PSI
½" HPF41CS-SR63.12	½" HPF41CS-SR63.9
¾" HPF41CS-SR63.12	¾" HPF41CS-SR75.9
1" HPF41CS-SR75.12	1" HPF41CS-SR83.9
1 ¼" HPF41CS-SR83.12	1 ¼" HPF41CS-SR92.8
1 ½" HPF41CS-SR92.12	1 ½" HPF41CS-SR105.9
2" HPF41CS-SR105.12	2" HPF41CS-SR125.8
3" HPF41CS-SR140.12	3" HPF41CS-SR140.11

HPF41 TRI-PRO SERIES WITH DOUBLE ACTING ACTUATOR

HPF41 W/ DA@80PSI	HPF41 W/ DA@60PSI
½" HPF41CS-DA40	½" HPF41CS-DA52
¾" HPF41CS-DA52	¾" HPF41CS-DA63
1" HPF41CS-DA63	1" HPF41CS-DA63
1 ¼" HPF41CS-DA75	1 ¼" HPF41CS-DA75
1 ½" HPF41CS-DA83	1 ½" HPF41CS-DA83
2" HPF41CS-DA83	2" HPF41CS-DA92
3" HPF41CS-DA125	3" HPF41CS-DA125

HPF42 TRI-PRO SERIES WITH SPRING RETURN ACTUATOR

HPF42 W/ SR@80PSI	HPF42 W/ SR@60PSI
½" HPF42CS-SR63.12	½" HPF42CS-SR63.9
¾" HPF42CS-SR63.12	¾" HPF42CS-SR75.9
1" HPF42CS-C-SR75.12	1" HPF42CS-SR83.9
1 ¼" HPF42CS-SR83.12	1 ¼" HPF42CS-SR92.8
1 ½" HPF42CS-SR92.12	1 ½" HPF42CS-SR105.9
2" HPF42CS-SR105.12	2" HPF42CS-SR125.8
3" HPF42CS-SR140.12	3" HPF42CS-SR140.11

HPF42 TRI-PRO SERIES WITH DOUBLE ACTING ACTUATOR

HPF42 W/ DA@80PSI	HPF42 W/ DA@60PSI
½" HPF42CS-DA40	½" HPF42CS-DA52
¾" HPF42CS-DA52	¾" HPF42CS-DA63
1" HPF42CS-DA63	1" HPF42CS-DA63
1 ¼" HPF42CS-DA75	1 ¼" HPF42CS-DA75
1 ½" HPF42CS-DA83	1 ½" HPF42CS-DA83
2" HPF42CS-DA83	2" HPF42CS-DA92
3" HPF42CS-DA125	3" HPF42CS-DA125

HPS51 W/ SR@80PSI	HPS51 W/ SR@60PSI
¾" HPS51SS-SR63.12	¾" HPS51SS-SR63.9
1" HPS51SS-SR75.12	1" HPS51SS-SR75.9
1 ¼" HPS51SS-SR75.12	1 ¼" HPS51SS-SR83.8
1 ½" HPS51SS-SR83.12	1 ½" HPS51SS-SR92.8
2" HPS51SS-SR92.12	2" HPS51SS-SR105.9
2 ½" HPS51SS-SR105.12	2 ½" HPS51SS-SR125.8
4" HPS51SS-SR140.12	4" HPS51SS-SR140.11

HPS51 TRI-PRO SERIES WITH DOUBLE ACTING ACTUATOR

HPS51 W/ DA@80PSI	HPS51 W/ DA@60PSI
¾" HPS51SS-DA40	¾" HPS51SS-DA52
1" HPS51SS-DA52	1" HPS51SS-DA63
1 ¼" HPS51SS-DA63	1 ¼" HPS51SS-DA63
1 ½" HPS51SS-DA75	1 ½" HPS51SS-DA75
2" HPS51SS-DA83	2" HPS51SS-DA83
2 ½" HPS51SS-DA83	2 ½" HPS51SS-DA92
4" HPS51SS-DA125	4" HPS51SS-DA125

HPS52 TRI-PRO SERIES WITH SPRING RETURN ACTUATOR

HPS52 W/ SR@80PSI	HPS52 W/ SR@60PSI
¾" HPS52SS-SR63.12	¾" HPS52SS-SR63.9
1" HPS52SS-SR75.12	1" HPS52SS-SR75.9
1 ¼" HPS52SS-SR75.12	1 ¼" HPS52SS-SR83.8
1 ½" HPS52SS-SR83.12	1 ½" HPS52SS-SR92.8
2" HPS52SS-SR92.12	2" HPS52SS-SR105.9
2 ½" HPS52SS-SR105.12	2 ½" HPS52SS-SR125.8
4" HPS52SS-SR140.12	4" HPS52SS-SR140.11

HPS52 TRI-PRO SERIES WITH DOUBLE ACTING ACTUATOR

HPS52 W/ DA@80PSI	HPS52 W/ DA@60PSI
¾" HPS52SS-DA40	¾" HPS52SS-DA52
1" HPS52SS-DA52	1" HPS52SS-DA63
1 ¼" HPS52SS-DA63	1 ¼" HPS52SS-DA63
1 ½" HPS52SS-DA75	1 ½" HPS52SS-DA75
2" HPS52SS-DA83	2" HPS52SS-DA83
2 ½" HPS52SS-DA83	2 ½" HPS52SS-DA92
4" HPS52SS-DA125	4" HPS52SS-DA125

HPS41 TRI-PRO SERIES WITH SPRING RETURN ACTUATOR

HPS41 W/ SR@80PSI	HPS41 W/ SR@60PSI
¾" HPS41CS-SR63.12	¾" HPS41CS-SR63.9
1" HPS41CS-SR75.12	1" HPS41CS-SR75.9
1 ¼" HPS41CS-SR75.12	1 ¼" HPS41CS-SR83.8
1 ½" HPS41CS-SR83.12	1 ½" HPS41CS-SR92.8
2" HPS41CS-SR92.12	2" HPS41CS-SR105.9
2 ½" HPS41CS-SR105.12	2 ½" HPS41CS-SR125.8
4" HPS41CS-SR140.12	4" HPS41CS-SR140.11

HPS41 TRI-PRO SERIES WITH DOUBLE ACTING ACTUATOR

HPS41 W/ DA@80PSI	HPS41 W/ DA@60PSI
¾" HPS41CS-DA40	¾" HPS41CS-DA52
1" HPS41CS-DA52	1" HPS41CS-DA63
1 ¼" HPS41CS-DA63	1 ¼" HPS41CS-DA63
1 ½" HPS41CS-DA75	1 ½" HPS41CS-DA75
2" HPS41CS-DA83	2" HPS41CS-DA83
2 ½" HPS41CS-DA83	2 ½" HPS41CS-DA92
4" HPS41CS-DA125	4" HPS41CS-DA125

HPS42 TRI-PRO SERIES WITH SPRING RETURN ACTUATOR

HPS42 W/ SR@80PSI	HPS42 W/ SR@60PSI
¾" HPS42CS-SR63.12	¾" HPS42CS-SR63.9
1" HPS42CS-SR75.12	1" HPS42CS-SR75.9
1 ¼" HPS42CS-SR75.12	1 ¼" HPS42CS-SR83.8
1 ½" HPS42CS-SR83.12	1 ½" HPS42CS-SR92.8
2" HPS42CS-SR92.12	2" HPS42CS-SR105.9
2 ½" HPS42CS-SR105.12	2 ½" HPS42CS-SR125.8
4" HPS41CS-SR140.12	4" HPS42CS-SR140.11

HPS42 TRI-PRO SERIES WITH DOUBLE ACTING ACTUATOR

HPS42 W/ DA@ 80PSI	HPS42 W/ DA@ 60PSI
¾" HPS42CS-DA40	¾" HPS42CS-DA52
1" HPS42CS-DA52	1" HPS42CS-DA63
1 ¼" HPS42CS-DA63	1 ¼" HPS42CS-DA63
1 ½" HPS42CS-DA75	1 ½" HPS42CS-DA75
2" HPS42CS-DA83	2" HPS42CS-DA83
2 ½" HPS42CS-DA83	2 ½" HPS42CS-DA92
4" HPS42CS-DA125	4" HPS42CS-DA125

Fusion Seal-Weld Body Design

S23SS FUSION SERIES WITH SPRING RETURN ACTUATOR

S23SS W/ SR@80PSI	S23SS W/ SR@60PSI
½" S23SS- SR63.12	½" S23SS-SR63.9
¾" S23SS-SR63.12	¾" S23SS-SR75.9
1" S23SS-SR63.12	1" S23SS-SR75.9
1 ¼" S23SS-SR83.12	1 ¼" S23SS-SR92.8
1 ½" S23SS-SR92.12	1 ½" S23SS-SR105.8
2" S23SS-SR105.12	2" S23SS-SR125.8
2 ½" S23SS-SR105.12	2 ½" S23SS-SR125.8
3" S23SS-SR125.12	3" S23SS-SR140.8

S23SS FUSION SERIES WITH DOUBLE ACTING ACTUATOR

S23SS W/ SR@80PSI	S23SS W/ SR@60PSI
½" S23SS- DA40	½" S23SS-DA52
¾" S23SS-DA52	¾" S23SS-DA52
1" S23SS-DA52	1" S23SS-DA52
1 ¼" S23SS-DA63	1 ¼" S23SS-DA63
1 ½" S23SS-DA75	1 ½" S23SS-DA83
2" S23SS-DA83	2" S23SS-DA83
2 ½" S23SS-DA92	2 ½" S23SS-DA92
3" S23SS-DA105	3" S23SS-DA125

S23CS FUSION SERIES WITH SPRING RETURN ACTUATOR

S23CS W/ SR@80PSI	S23CS W/ SR@60PSI
½" S23CS-SR63.12	½" S23CS-SR63.9
¾" S23CS-SR63.12	¾" S23CS-SR75.9
1" S23CS-SR63.12	1" S23CS-SR75.9
1 ¼" S23CS-SR83.12	1 ¼" S23CS-SR92.8
1 ½" S23CS-SR92.12	1 ½" S23CS-SR105.8
2" S23CS-SR105.12	2" S23CS-SR125.8
2 ½" S23CS-SR125.12	2 ½" S23CS-SR125.8
3" S23CS-SR125.12	3" S23CS-SR140.8

S23CS FUSION SERIES WITH DOUBLE ACTING ACTUATOR

S23CS W/ DA@80PSI	S23CS W/ DA@60PSI
½" S23CS-DA40	½" S23CS-DA52
¾" S23CS-DA52	¾" S23CS-DA52
1" S23CS-DA52	1" S23CS-DA52
1 ¼" S23CS-DA63	1 ¼" S23CS-DA63
1 ½" S23CS-DA75	1 ½" S23CS-DA83
2" S23CS-DA83	2" S23CS-DA83
2 ½" S23CS-DA92	2 ½" S23CS-DA92
3" S23CS-DA92	3" S23CS-DA125

T23SS FUSION SERIES WITH SPRING RETURN ACTUATOR

T23SS W/ SR@80PSI	T23SS W/ SR@60PSI
½" T23SS-SR52.12	½" T23SS-SR63.8
¾" T23SS-SR63.12	¾" T23SS-SR63.9
1" T23SS-SR63.12	1" T23SS-SR63.9
1 ¼" T23SS-SR83.12	1 ¼" T23SS-SR83.9
1 ½" T23SS-SR83.12	1 ½" T23SS-SR92.9
2" T23SS-SR92.12	2" T23SS-SR105.8
2 ½" T23SS-SR105.12	2 ½" T23SS-SR125.8
3" T23SS-SR125.12	3" T23SS-SR140.8

T23SS FUSION SERIES WITH DOUBLE ACTING ACTUATOR

T23SS W/ DA@80PSI	T23SS W/ DA@60PSI
½" T23SS-DA40	½" T23SS-DA40
¾" T23SS-DA52	¾" T23SS-DA52
1" T23SS-DA52	1" T23SS-DA52
1 ¼" T23SS-DA63	1 ¼" T23SS-DA75
1 ½" T23SS-DA63	1 ½" T23SS-DA75
2" T23SS-DA75	2" T23SS-DA83
2 ½" T23SS-DA92	2 ½" T23SS-DA92
3" T23SS-DA92	3" T23SS-DA105

3-Way SS Ball Valves/Threaded Ends

MPT100-L MULTI-PORT SERIES WITH SPRING RETURN ACTUATOR

MPT100-L W/ SR@80PSI	MPT100-L W/ SR@60PSI
¼" MPT100-L-SR63.12	¼" MPT100-L-SR63.8
½" MPT100-L-SR63.12	½" MPT100-L-SR63.8
¾" MPT100-L-SR75.12	¾" MPT100-L-SR83.8
1" MPT100-L-SR83.12	1" MPT100-L-SR92.9
1 ¼" MPT100-L-SR92.12	1 ¼" MPT100-L-SR105.8
1 ½" MPT100-L-SR105.12	1 ½" MPT100-L-SR125.8
2" MPT100-L-SR125.12	2" MPT100-L-SR140.8

MPT100-L W/ DA@80PSI	MPT100-L W/ DA@60PSI
¼" MPT100-L-DA52	¼" MPT100-L-DA52
½" MPT100-L-DA52	½" MPT100-L-DA52
¾" MPT100-L-DA63	¾" MPT100-L-DA63
1" MPT100-L-DA63	1" MPT100-L-DA75
1 ¼" MPT100-L-DA75	1 ¼" MPT100-L-DA83
1 ½" MPT100-L-DA83	1 ½" MPT100-L-DA83
2" MPT100-L-DA92	2" MPT100-L-DA105

MPT100-T MULTI-PORT SERIES WITH SPRING RETURN ACTUATOR

MPT100-T W/ SR@80PSI	MPT100-T W/ SR@60PSI List
¼" MPT100-T-SR63.12	¼" MPT100-T-SR63.8
½" MPT100-T-SR63.12	½" MPT100-T-SR63.8
¾" MPT100-T-SR75.12	¾" MPT100-T-SR83.8
1" MPT100-T-SR83.12	1" MPT100-T-SR92.9
1 ¼" MPT100-T-SR92.12	1 ¼" MPT100-T-SR105.8
1 ½" MPT100-T-SR105.12	1 ½" MPT100-T-SR125.8
2" MPT100-T-SR125.12	2" MPT100-T-SR140.8

MPT100-T MULTI-PORT SERIES WITH DOUBLE ACTING ACTUATOR

MPT100-T W/ DA@80PSI	MPT100-T W/ DA@60PSI
¼" MPT100-T-DA52	¼" MPT100-T-DA52
½" MPT100-T-DA52	½" MPT100-T-DA52
¾" MPT100-T-DA63	¾" MPT100-T-DA63
1" MPT100-T-DA63	1" MPT100-T-DA75
1 ¼" MPT100-T-DA75	1 ¼" MPT100-T-DA83
1 ½" MPT100-T-DA83	1 ½" MPT100-T-DA83
2" MPT100-T-DA92	2" MPT100-T-DA105

MPF15SS TRANS-FLO SERIES WITH SPRING RETURN ACTUATOR

MPF15SS W/ SR@80PSI	MPF15SS W/SR@60PSI
1" MPF15SS-SR92.12	1" MPF15SS-SR105.8
1 ½"MPF15SS-SR105.12	1 ½"MPF15SS-SR125.6
2" MPF15SS-SR125.12	2" MPF15SS- SR125.8
3" MPF15SS-SR160.12	3" MPF15SS-SR160.8
4" MPF15SS-SR190.12	4" MPF15SS-SR190.9
6" MPF15SS-SR270.12	6" MPF15SS-SR270.10

MPF15SS TRANS-FLO SERIES WITH DOUBLE ACTING ACTUATOR

MPF15SS W/ DA@80PSI	MPF15SS W/ DA@60PSI
1" MPF15SS- DA75	1" MPF15SS-DA75
1 ½"MPF15SS-DA75	1 ½"MPF15SS-DA83
2" MPF15SS-DA92	2" MPF15SS-DA92
3" MPF15SS-DA125	3" MPF15SS-DA125
4" MPF15SS-DA140	4" MPF15SS-DA140
6" MPF15SS-DA190	6" MPF15SS-DA210
8" MPF15SS-DA240	8" MPF15SS-DA270

MPF15CS W/ SR@80PSI	MPF15CS W/ SR@60PSI
1 ½"MPF15CS-SR105.12	1 ½"MPF15CS- SR125.6
2" MPF15CS-SR125.12	2" MPF15CS-SR125.8
3" MPF15CS-SR160.12	3" MPF15CS-SR160.8
4" MPF15CS-SR190.12	4" MPF15CS-SR190.9
6" MPF15CS-SR270.12	6" MPF15CS-SR270.9

MPF15CS TRANS-FLO SERIES WITH DOUBLE ACTING ACTUATOR

MPF15CS W/ DA@80PSI	MPF15CS W/ DA@60PSI
1 ½"MPF15CS- DA75	1 ½"MPF15CS-DA83
2" MPF15CS-DA92	2" MPF15CS-DA92
3" MPF15CS-DA125	3" MPF15CS-DA125
4" MPF15CS-DA140	4" MPF15CS-DA140
6" MPF15CS-DA190	6" MPF15CS-DA210
8" MPF15CS-DA240	8" MPF15CS-DA270

Flanged Wafer 150#

KOMPACT SERIES WAFER/FLANGED FULL BORE BALL VALVE

W150SS W/ DA@80PSI	W150SS W/ DA@60PSI
2"W150-SS-DA63	2"W150-SS- DA75
3"W150-SS-DA92	3"W150-SS-DA92
4"W150-SS-DA92	4"W150-SS-DA105
6"W150-SS-DA125	6"W150-SS-DA140

KOMPACT SERIES WAFER/FLANGED FULL BORE BALL VALVE

WF15SS W/ SR@80PSI	WF15SS W/ SR@60PSI
2"WF150-SS-SR83.12	2"WF150-SS-SR92.8
3"WF150-SS-SR105.12	3"WF150SS-SR125.8
4"WF150SS-SR125.12	4"WF150SS-SR140.8
6"WF150SS-SR140.12	6"WF150SS-SR160.8

This price list will be for either a 25% carbon TFM (Y) or 50/50 Stainless Teflon (S) Seats

Flanged End 150# Full Port

F150SS FULL FLO SERIES WITH SPRING RETURN ACTUATOR

F150SS-Y/S W/ SR@80PSI	F150SS-Y/S W/ SR@60PSI
½" F150SS- Y/S -SR63.12	½" F150SS- Y/S -SR63.8
¾" F150SS- Y/S -SR63.12	¾" F150SS- Y/S -SR63.9
1" F150SS- Y/S -SR75.12	1" F150SS- Y/S -SR75.9
1 ½" F150SS- Y/S -SR92.12	1 ½" F150SS- Y/S -SR92.9
2" F150SS- Y/S -SR105.12	2" F150SS- Y/S -SR105.8
2 ½" F150SS- Y/S -SR125.12	2 ½" F150SS- Y/S -SR125.9
3" F150SS- Y/S -SR140.12	3" F150SS- Y/S -SR140.8
4" F150SS- Y/S -SR160.12	4" F150SS- Y/S -SR160.8
6" F150SS- Y/S -SR240.12	6" F150SS- Y/S -SR240.8
8" F150SS- Y/S -SR300.12	8" F150SS- Y/S -SR300.9
10" F150SS- Y/S -SR400.12	10" F150SS- Y/S -SR400.10
12" F150SS- Y/S -SR400.12	12" F150SS- Y/S -SR400.14

F150SS FULL FLO SERIES WITH DOUBLE ACTING ACTUATOR

Mint Green columns indicates special seating (Y) or (S)

F150SS-Y/S W/ DA@80PSI	F150SS-Y/S W/ DA@60PSI
½" F150SS-Y/S -DA52	½" F150SS-Y/S -DA52
¾" F150SS-Y/S -DA52	¾" F150SS-Y/S -DA63
1" F150SS-Y/S -DA52	1" F150S-Y/S -DA63
1 ½" F150SS-Y/S -DA75	1 ½" F150SS-Y/S -DA83
2" F150SS-Y/S -DA83	2" F150SS-Y/S -DA92
2 ½" F150SS-Y/S -DA92	2 ½" F150SS-Y/S -DA105
3" F150SS-Y/S -DA105	3" F150S-Y/S -DA125
4" F150SS-Y/S -DA125	4" F150SS-Y/S -DA140
6" F150SS-Y/S -DA190	6" F150SS-Y/S -DA190
8" F150SS-Y/S -DA240	8" F150S-Y/S -DA270
10" F150SS-Y/S -DA270	10" F150SS-Y/S -DAB300
12" F150SS-Y/S -DAB300	12" F150S-Y/S -DAB350

F150CS FULL FLO SERIES WITH SPRING RETURN ACTUATOR

F150CS-Y/S W/ SR@80PSI	F150CS-Y/S W/ SR@60PSI
½" F150CS-Y/S -SR63.12	½" F150CS-Y/S -SR63.8
¾" F150CS-Y/S -SR63.12	¾" F150CS-Y/S -SR63.9
1" F150CS-Y/S -SR75.12	1" F150CS-Y/S -SR75.9
1 ½" F150CS-Y/S -SR92.12	1 ½" F150CS-Y/S -SR92.9
2" F150CS-Y/S -SR105.12	2" F150CS-Y/S -SR105.8
2 ½" F150CS-Y/S -SR125.12	2 ½" F150CS-Y/S -SR125.9
3" F150CS-Y/S -SR140.12	3" F150CS-Y/S -SR140.8
4" F150CS-Y/S -SR160.12	4" F150CS-Y/S -SR160.8
6" F150CS-Y/S -SR240.12	6" F150CS-Y/S -SR240.8
8" F150CS-Y/S -SR300.12	8" F150CS-Y/S -SR300.9
10" F150CS-Y/S -SR400.12	10" F150CS-Y/S -SR400.10
12" F150CS-Y/S -SR400.14	12" F150CS-Y/S -SR400.14

This price list will be for either a 25% carbon TFM (Y) or 50/50 Stainless Teflon (S) Seats

F150CS FULL FLO SERIES WITH DOUBLE ACTING ACTUATOR

F150CS-Y/S W/ DA@80PSI	F150CS-Y/S W/ DA@60PSI
½" F150CS-Y/S -DA52	½" F150CS-Y/S -DA52
¾" F150CS-Y/S -DA52	¾" F150CS-Y/S -DA63
1" F150CS-Y/S -DA52	1" F150CS-Y/S -DA63
1 ½" F150CS-Y/S -DA75	1 ½" F150CS-Y/S -DA83
2" F150CS-Y/S -DA83	2" F150CS-Y/S -DA92
2 ½" F150CS-Y/S -DA92	2 ½" F150CS-Y/S -DA105
3" F150CS-Y/S -DA105	3" F150CS-Y/S -DA125
4" F150CS-Y/S -DA125	4" F150CS-Y/S -DA140
6" F150CS-Y/S -DA190	6" F150CS-Y/S -DA190
8" F150CS-Y/S -DA240	8" F150CS-Y/S -DA270
10" F150CS-Y/S -DA270	10" F150CS-Y/S -DAB300
12" F150CS-Y/S -DAB300	12" F150CS-Y/S -DAB350

Flanged End 300# Full Port

F300SS FULL FLO SERIES WITH SPRING RETURN ACTUATOR

F300SS Y/S W/ SR@80PSI	F300SS Y/S W/ SR@60PSI
½" F300SS-Y/S -SR63.12	½" F300SS-Y/S -SR63.10
¾" F300SS-Y/S -SR63.12	¾" F300SS-Y/S -SR75.8
1" F300SS-Y/S SR75.12	1" F300SS-Y/S -SR83.8
1 ½" F300SS- /S -SR92.12	1 ½" F300SS-Y/S -SR92.8
2" F300SS-Y/S -SR105.12	2" F300SS-Y/S -SR125.8
2 ½" F300SS-Y/S -SR125.12	2 ½" F300SS-Y/S -SR140.8
3" F300SS-Y/S -SR140.12	3" F300SS-Y/S -SR140.8
4" F300SS-Y/S -SR160.12	4" F300SS-Y/S -SR190.8
6" F300SS-Y/S -SR240.12	6" F300SS-Y/S -SR270.9
8" F300SS-Y/S-SR300.11	8" F300SS-Y/S-SR350.8
10" F300SS-Y/S-SR400.12	10" F300SS-Y/S-SR400.10
12" F300SS-Y/S-SR400.14	12" F300SS-Y/S-SR400

F300SS FULL FLO SERIES WITH DOUBLE ACTING ACTUATOR

F300SS Y/S W/ DA@80PSI	F300SS Y/S W/ DA@60PSI
½" F300SS-Y/S -DA52	½" F300SS-Y/S -DA52
¾" F300SS-Y/S -DA52	¾" F300SS-Y/S -DA63
1" F300SS-Y/S -DA52	1" F300SS-Y/S -DA63
1 ½" F300SS-Y/S -DA75	1 ½" F300SS-Y/S -DA83
2" F300SS-Y/S -DA83	2" F300SS-Y/S -DA92
2 ½" F300SS-Y/S -DA92	2 ½" F300SS-Y/S -DA105
3" F300SS-Y/S -DA105	3" F300SS-Y/S -DA125
4" F300SS-Y/S -DA125	4" F300SS-Y/S -DA140
6" F300SS-Y/S -DA190	6" F300SS-Y/S -DA190
8" F300SS-Y/S -DA240	8" F300SS-Y/S -DA270
10" F300SS-Y/S -DA270	10" F300SS-Y/S -DAB300
12" F300SS-Y/S -DAB300	12" F300SS-Y/S -DAB350

Mint Green columns indicates special seating (Y) or (S)

F300CS FULL FLO SERIES WITH SPRING RETURN ACTUATOR

F300CS Y/S W/ SR@80PSI	F300CS Y/S W/ SR@60PSI
½" F300CS-Y/S -SR63.12	½" F300CS-Y/S -SR63.8
¾" F300CS-Y/S -SR63.12	¾" F300CS-Y/S -SR75.8
1" F300CS-Y/S -SR75.12	1" F300CS-Y/S -SR83.8
1 ½" F300CS-Y/S -SR92.12	1 ½" F300CS-Y/S -SR92.8
2" F300CS-Y/S -SR105.12	2" F300CS-Y/S -SR125.8
2 ½" F300CS-Y/S -SR125.12	2 ½" F300CS-Y/S -SR140.8
3" F300CS-Y/S -SR140.12	3" F300CS-Y/S -SR140.8
4" F300CS-Y/S -SR160.12	4" F300CS-Y/S -SR190.8
6" F300CS-Y/S -SR240.12	6" F300CS-Y/S -SR270.9
8" F300CS-Y/S -SR300.11	8" F300CS-Y/S -SR350.8
10" F300CS-Y/S -SR400.12	10" F300CS-Y/S -SR400.10
12" F300CS-Y/S -SR400.14	12" F300CS-Y/S -SR400

F300CS FULL FLO SERIES WITH DOUBLE ACTING ACTUATOR

F300CS Y/S W/ DA@80PSI	F150SS-Y/S W/ SR@60PSI
½" F300CS-Y/S C-DA52	½" F300CS- Y/S -DA52
¾" F300CS-Y/S -DA52	¾" F300CS- Y/S -DA63
1" F300CS-Y/S -DA52	1" F300CS- Y/S -DA63
1 ½" F300CS-Y/S -DA75	1 ½" F300CS- Y/S -DA83
2" F300CS-Y/S -DA83	2" F300CS- Y/S -DA92
2 ½" F300CS-Y/S -DA92	2 ½" F300CS- Y/S -DA105
3" F300CS-Y/S -DA105	3" F300CS- Y/S -DA125
4" F300CS-Y/S -DA125	4" F300CS- Y/S -DA140
6" F300CS-Y/S -DA190	6" F300CS- Y/S -DA190
8" F300CS-Y/S -DA240	8" F300CS-Y/S -DA270
10" F300CS-Y/S -DA270	10" F300CS-Y/S -DAB300
12" F300CS-Y/S -DAB300	12" F300SS-Y/S -DAB350

MPF15SS MULTI-POR T SERIES WITH SPRING RETURN ACTUATOR

MPF15SS Y/S W/ SR@80PSI	MPF15SS Y/S W/SR@60PSI
¾" MPF15SS Y/S - SR83.12	¾" MPF15SS Y/S- SR92.12
1" MPF15SS- Y/S -SR92.12	1" MPF15SS- Y/S -SR105.8
1 ½"MPF15SS- Y/S -SR105.12	1 ½"MPF15SS- Y/S -SR125.8
2" MPF15SS- Y/S -SR125.12	2" MPF15SS- Y/S -SR140.8
2 ½" MPF15SS-Y/S -SR140.12	2 ½" MPF15SS-Y/S -SR160.8
3" MPF15SS- Y/S -SR160.12	3" MPF15SS- Y/S -SR190.7
4" MPF15SS- Y/S -SR190.12	4" MPF15SS- Y/S -SR210.8
6" MPF15SS- Y/S -SR270.12	6" MPF15SS- Y/S -SR300.9

Mint Green columns indicates special seating (Y) or (S)

MPF15SS Y/S W/ DA@80PSI	MPF15SS Y/S W/ DA@60PSI
¾" MPF15SS Y/S – DA75	¾" MPF15SS Y/S – DA75
1" MPF15SS- Y/S –DA83	1" MPF15SS- Y/S –DA83
1 ½"MPF15SS- Y/S –DA83	1 ½"MPF15SS- Y/S –DA92
2" MPF15SS- Y/S –DA92	2" MPF15SS- Y/S –DA105
2 ½" MPF15SS Y/S –DA125	2 ½" MPF15SS Y/S –DA125
3" MPF15SS- Y/S -DA125	3" MPF15SS- Y/S –DA140
4" MPF15SS- Y/S -DA140	4" MPF15SS- Y/S –DA160
6" MPF15SS- Y/S –DA210	6" MPF15SS- Y/S –DA240

MPF15CS TRANS-FLO SERIES WITH SPRING RETURN ACTUATOR

MPF15CS Y/S W/ SR@80PSI	MPF15CS Y/S W/ SR@60PSI
¾" MPF15CS Y/S – SR83.12	¾" MPF15CS Y/S – SR92.12
1" MPF15CS- Y/S –SR92.123	1" MPF15CS- Y/S –SR105.8
1 ½"MPF15CS- Y/S-SR105.12	1 ½"MPF15CS- Y/S -SR125.8
2" MPF15CS- Y/S -SR125.12	2" MPF15CS- Y/S -SR140.8
2 ½" MPF15CS-Y/S-SR140.12	2 ½" MPF15CS-Y/S-SR160.8
3" MPF15CS- Y/S -SR160.12	3" MPF15CS- Y/S –SR190.7
4" MPF15CS- Y/S -SR190.12	4" MPF15CS- Y/S –SR210.8
6" MPF15CS- Y/S -SR270.12	6" MPF15CS-Y/S-SR300.9

MPF15CS TRANS-FLO SERIES WITH DOUBLE ACTING ACTUATOR

MPF15CS Y/S W/ DA@80PSI	MPF15CS Y/S W/ DA@60PSI
¾" MPF15CS Y/S – DA75	¾" MPF15CS Y/S – DA75
1" MPF15CS- Y/S –DA83	1" MPF15CS- Y/S –DA83
1 ½"MPF15CS- Y/S –DA783	1 ½"MPF15CS- Y/S –DA92
2" MPF15CS- Y/S -DA92	2" MPF15CS- Y/S –DA105
2 ½" MPF15SS Y/S –DA125	2 ½" MPF15CS Y/S –DA125
3" MPF15CS- Y/S -DA125	3" MPF15CS- Y/S –DA140
4" MPF15CS- Y/S -DA140	4" MPF15CS- Y/S –DA160
6" MPF15CS- Y/S –DA210	6" MPF15CS- Y/S -DA240

Direct Mount Ball Valves

DM300 3-PC DIRECT MOUNT AUTOMATION SERIES WITH SPRING RETURN ACTUATOR

DM300 3-PC with SR @80PSI	DM300 3-PC with SR@60PSI
½" DM300SS-SR52.12	½" DM300SS-SR52.9
¾" DM300SS-SR52.12	¾" DM300SS-SR52.8
1" DM300SS-SR63.12	1" DM300SS-SR63.9
1-1/2" DM300SS-SR83.12	1-1/2" DM300SS-SR83.8
2" DM300SS-SR92.12	2" DM300SS-SR-92.9
2-1/2" DM300SS	2-1/2" DM300SS
3" DM300SS	3" DM300SS

3-PCS DIRECT MOUNT AUTOMATION SERIES WITH DOUBLE ACTING ACTUATOR

DM300 3-PC with DA@80PSI	DM300 3-PC with DA@60PSI
½" DM300SS-DA40	½" DM300SS-DA40
¾"DM 300SS-DA52	¾" DM300SS-DA52
1" DM300SS-DA52	1" DM300SS-DA52
1 ½" DM300SS-DA75	1 ½"DM300SS-DA83
2" DM300SS-DA75	2" DM300SS-DA83
2 ½" DM300SS	2 ½" DM300SS
3" DM300SS	3" DM300SS

DM85 2-PC with SR@80PSI	DM85 2-PC with SR@60PSI
½" DM85SS-SR52.12	½" DM85SS-SR52.9
¾" DM85SS-SR52.12	¾" DM85SS-SR52.8
1" DM85SS-SR63.12	1" DM85SS-SR63.9
1-1/2" DM85SS-SR83.12	1-1/2" DM85SS-SR83.8
2" DM85SS-SR92.12	2" DM85SS-SR92.9

DM85 2-PCS DIRECT MOUNT SERIES WITH DOUBLE ACTING ACTUATOR

DM85-2PC with DA@80PSI	DM85-2PC with DA@60PSI
½" DM85SS-DA40	½" DM85SS-DA40
¾" DM85SS-DA52	¾" DM85SS-DA52
1" DM85SS-DA52	1" DM85SS-DA52
1-1/2" DM85SS-DA75	1-1/2" DM85SS-DA75
2" DM85SS-DA75	2" DM85SS-DA83

DMF15SS FLANGED DIRECT MOUNT SERIES WITH SPRING RETURN ACTUATOR

DMF15SS with SR@80PSI	DMF15SS with SR@60PSI
½" DMF15SS-SR52.12	½" DMF15SS-SR52.9
¾" DMF15SS-SR52.12	¾" DMF15SS-SR52.8
1" DMF15SS-SR63.12	1" DMF15SS-SR63.9
1-1/2" DMF15SS-SR83.12	1-1/2" DMF15SS-SR83.8
2" DMF15SS-SR92.12	2" DMF15SS-SR92.9

DMF15SS FLANGED DIRECT MOUNT SERIES WITH DOUBLE ACTING ACTUATOR

DMF15SS with DA@80PSI	DMF15SS with DA@60PSI
½" DMF15SS-DA40	½" DMF15SS-DA40
¾" DMF15SS-DA52	¾" DMF15SS-DA52
1" DMF15SS-DA52	1" DMF15SS-DA52
1-1/2" DMF15SS-DA75	1-1/2" DMF15SS-DA83
2" DMF15SS-DA75	2" DMF15SS-DA-83

DM51BZ DIRECT MOUNT BRASS BALL SERIES WITH SPRING RETURN ACTUATOR

DM51 BZ with SR@80PSI	DM51 BZ with SR@60PSI
¼" DM51BZ-SR52.12	¼" DM51BZ-SR52.8
3/8" DM51BZ-SR52.12	3/8" DM51BZ-SR52.8
½" DM51BZ-SR52.12	½" DM51BZ-SR52.8
¾" DM51BZ-SR52.12	¾" DM51BZ-SR52.8
1" DM51BZ-SR52.12	1" DM51BZ-SR52.8
1-1/4" DM51BZ-SR52.12	1-1/4" DM51BZ-SR52.8
1-1/2" DM51BZ-SR75.12	1-1/2" DM51BZ-SR83.9
2" DM51BZ-SR75.12	2" DM51BZ-SR83.9
2.5" DM51BZ-SR-83.12	2.5" DM51BZ-SR92.8
3" DM51BZ-SR83.12	3" DM51BZ-SR92.8
4" DM51BZ-SR105.12	4" DM51BZ-SR125.8

DM51 BZ with DA @80PSI	DM51 BZ with DA @60PSI
¼" DM51BZ-DA40	¼" DM51BZ-DA40
3/8" DM51BZ-DA40	3/8" DM51BZ-DA40
½" DM51BZ-DA40	½" DM51BZ-DA40
¾" DM51BZ-DA52	¾" DM51BZ-DA52
1" DM51BZ-DA52	1" DM51BZ-DA52
1-1/4" DM51BZ-DA52	1-1/4" DM51BZ-DA52
1-1/2" DM51BZ-DA75	1-1/2" DM51BZ-DA83
2" DM51BZ-DA83	2" DM51BZ-DA83
2.5" DM51BZ-DA83	2.5" DM51BZ-DA83
3" DM51BZ-DA83	3" DM51BZ-DA92
4" DM51BZ-DA92	4" DM51BZ-DA92

DM2000 DIRECT MOUNT SERIES WITH SPRING RETURN ACTUATOR

DM2000SS with SR@80PSI	DM2000SS with SR@60PSI
½" DM2000SS- SR63	½" DM2000SS- SR63.8
¾" DM2000SS- SR63	¾" DM2000SS- SR75.9
1" DM2000SS- SR75	1" DM2000SS- SR75.8
1-1/2" DM2000SS- SR75	1-1/2" DM2000SS- SR83.8
2" DM2000SS- SR83	2" DM2000SS- SR-83.8

Flanged End 150# - Electric Actuators

F150CS FULL FLO SERIES WITH ELECTRIC MOTOR ACTUATOR

F150CS w/TFM seats, Electric Motor Actuator 120v	F150CS w/ 50/50 seats, Electric Motor Actuator 120v
½" F150CS-ELO-NA4K0	½" F150CS-ELO-NA4K0
¾" F150CS-ELO-NA4K0	¾" F150CS-ELO-NA4K0
1" F150CS-ELO-NA4K0	1" F150CS-ELO-NA4K0
1 ¼" F150CS-ELO-NA4K0	1 ¼" F150CS-ELO-NR6K0
1 ½" F150CS-ELO-NA4K0	1 ½" F150CS-ELO-NR6K0
2" F150CS-ELO-NR6K0	2" F150CS-ELO-NA8K0
2 ½" F150CS-ELO-NA8K0	2 ½" F150CS-ELO-NB9K0
3" F150CS-ELO-NB9K0	3" F150CS-ELO-NB9K0
4" F150CS-ELO-NA10K0	4" F150CS-ELO-NA10K0
5" F150CS-ELO-NB11K0	5" F150CS-ELO-ND13K0
6" F150CS-ELO-NC12K0	6" F150CS-ELO-ND13K0
8" F150CS-ELO-NE14K0	8" F150CS-ELO-NF15K0
10" F150CS-ELO-NA16K0	10" F150CS-ELO-NB17K0
12" F150CS-ELO-NA18K0	12" F150CS-ELO-NA18K0

Flanged End 300# - Electric Actuators

F300SS FULL FLO SERIES WITH ELECTRIC MOTOR ACTUATOR

F300SS w/ TFM seats, Electric Motor Actuator 120v	F300SS w/ 50/50 seats, Electric Motor Actuator 120v
½" F300SS-ELO-NA4K0	½" F300SS-ELO-NA4K0
¾" F300SS-ELO-NA4K0	¾" F300SS-ELO-NA4K0
1" F300SS-ELO-NA4K0	1" F300SS-ELO-NA4K0
1 ¼" F300SS-ELO-NA4K0	1 ¼" F300SS-ELO-NR6K0
1 ½" F300SS-ELO-NA4K0	1 ½" F300SS-ELO-NR6K0
2" F300SS-ELO-NR6K0	2" F300SS-ELO-NA8K0
2 ½" F300SS-ELO-NA8K0	2 ½" F300SS-ELO-NB9K0
3" F300SS-ELO-NB9K0	3" F300SS-ELO-NB9K0
4" F300SS-ELO-NA10K0	4" F300SS-ELO-NA10K0
5" F300SS-ELO-NB11K0	5" F300SS-ELO-ND13K0
6" F300SS-ELO-NC12K0	6" F300SS-ELO-ND13K0
8" F300SS-ELO-NE14K0	8" F300SS-ELO-NF15K0
10" F300SS-ELO-NA16K0	10" F300SS-ELO-NB17K0
12" F300SS-ELO-NB17K0	12" F300SS-ELO-NA18K0

F300CS w/ TFM seats, Electric Motor Actuator 120v	F300CS w/ 50/50 seats, Electric Motor Actuator 120v
½" F300CS-ELO-NA4K0	½" F300CS-ELO-NA4K0
¾" F300CS-ELO-NA4K0	¾" F300CS-ELO-NA4K0
1" F300CS-ELO-NA4K0	1" F300CS-ELO-NA4K0
1 ¼" F300CS-ELO-NA4K0	1 ¼" F300CS-ELO-NR6K0
1 ½" F300CS-ELO-NA4K0	1 ½" F300CS-ELO-NR6K0
2" F300CS-ELO-NR6K0	2" F300CS-ELO-NA8K0
2 ½" F300CS-ELO- NA8K0	2 ½" F300CS-ELO-NB9K0
3" F300CS-ELO-NB9K0	3" F300CS-ELO-NB9K0
4" F300CS-ELO-NA10K0	4" F300CS-ELO-NA10K0
5" F300CS-ELO-NB11K0	5" F300CS-ELO-ND13K0
6" F300CS-ELO-NC12K0	6" F300CS-ELO-ND13K0
8" F300CS-ELO-NE14K0	8" F300CS-ELO-NF15K0
10" F300CS-ELO-NA16K0	10" F300CS-ELO-NB17K0
12" F300CS-ELO-NB17K0	12" F300CS-ELO-NA18K0

SF150SS REDUCED PORT FLANGED END

SF150SS w/ TFM seats, Electric Motor Actuator 120v	SF150SS w/ 50/50 seats, Electric Motor Actuator 120v
1 ½" SF150SS-ELO-NA4K0	1 ½" SF150SS-ELO-NR6K0
2" SF150SS- ELO-NA4K0	2" SF150SS-ELO-NR6K0
2 ½" SF150SS-ELO-NA8K0	2 ½" SF150SS-ELO-NB9K0
3" SF150SS-ELO-NA8K0	3" SF150SS-ELO-NB9K0
4" SF150SS-ELO-NB9K0	4" SF150SS-ELO-NB9K0
6" SF150SS-ELO-NA10K0	6" SF150SS-ELO-NA10K0
8" SF150SS-ELO-NC12K0	8" SF150SS-ELO-ND13K0
10"SF150SS-ELO-NE14K0	10" SF150SS-ELO-NF15K0
12" SF150SS-ELO-NA16K0	12" SF150SS-ELO-NA18K0

SF150CS REDUCED PORT FLANGED END

SF150CS w/ TFM seats, Electric Motor Actuator 120v	SF150CS w/ 50/50 seats, Electric Motor Actuator 120v
1 ½" SF150CS-ELO-NA4K0	1 ½" SF150CS-ELO-NR6K0
2" SF150CS- ELO-NA4K0	2" SF150CS-ELO-NR6K0
2 ½" SF150CS-ELO-NA8K0	2 ½" SF150CS- ELO-NB9K0
3" SF150CS-ELO-NA8K0	3" SF150CS-ELO-NB9K0
4" SF150CS-ELO-NB9K0	4" SF150CS-ELO-NB9K0
6" SF150CS-ELO-NA10K0	6" SF150CS-ELO-NA10K0
8" SF150CS-ELO-NC12K0	8" SF150CS-ELO-ND13K0
10"SF150CS-ELO-NE14K0	10" SF150CS-ELO-NF15K0
12" SF150CS-ELO-NA16K0	12" SF150CS-ELO-NA18K0

WAFER STYLE

W150SS/CS KOMPACT SERIES WITH ELECTRIC MOTOR ACTUATORS

W150SS Series w/ Electric Motor Actuator 120v	W150CS Series w/ Electric Motor Actuator 120v
½" W150SS-ELO-NA4K0	½" W150CS- ELO-NA4K0
¾" W150SS-ELO-NA4K0	¾" W150CS- ELO-NA4K0
1" W150SS- ELO-NA4K0	1" W150CS- ELO-NA4K0
1 ¼" W150SS-ELO-NA4K0	1 ¼" W150CS-ELO-NA4K0
1 ½" W150SS-ELO-NA4K0	1 ½" W150CS-ELO-NA4K0
2"W150SS-ELO-NR6K0	2"W150CS-ELO-NR6K0
3"W150SS-ELO-NA8K0	3"W150CS-ELO-NA8K0
4"W150SS-ELO-NB9K0	4"W150CS-ELO-NB9K0
6"W150SS-ELO-NA10K0	6"W150CS-ELO-NA10K0

3 Way Multi-Port Valves

MPF15SS TRANS-FLO SERIES ELECTRIC MOTOR ACTUATOR

MPF15SS w/ Electric Motor Actuator 120v	MPF15CS Series w/ Electric Motor Actuator 120v
2"MPF15SS-ELO-NR6K0	2"MPF15CS-ELO-NR6K0
3"MPF15SS-ELO-NA8K0	3"MPF15CS-ELO-NA8K0
4"MPF15SS-ELO-NB9K0	4"MPF15CS-ELO-NB9K0

MPF15SS TRANS-FLO SERIES ELECTRIC MOTOR ACTUATOR

MPF15SS w/TFM seats w/ Electric Motor Actuator 120v	MPF15SS w/ 50/50 seats w/ Electric Motor Actuator 120v
½"MPF15SS-ELO-NA4K0	½"MPF15SS-ELO-NA4K0
¾"MPF15SS-ELO-NA4K0	¾"MPF15SS-ELO-NR6K0
1"MPF15SS-ELO-NA4K0	1"MPF15SS-ELO-NA8K0
1 ½"MPF15SS-ELO-NA8K0	1 ½"MPF15SS-ELO-NA8K0
2"MPF15SS-ELO-NA8K0	2"MPF15SS-ELO-NB9K0
2 ½"MPF15SS-ELO-NA10K0	2 ½"MPF15SS-ELO-NA10K0
3"MPF15SS-ELO-NA10K0	3"MPF15SS-ELO-NA10K0
4"MPF15SS-ELO-NA10K0	4"MPF15SS-ELO-NC12K0
6"MPF15SS-ELO-NC12K0	6"MPF15SS-ELO-NE14K0
8"MPF15SS-ELO-NE14K0	8"MPF15SS-ELO-NF15K0
10"MPF15SS-ELO-NF15K0	10"MPF15SS-ELO-NA18K0
12" MPF15SS-ELO-NB17K0	12"MPF15SS-ELO-NA19K0

MPF15CS TRANS-FLO SERIES ELECTRIC MOTOR ACTUATOR

MPF15CS w/ TFM seats, Electric Motor Actuator 120v	MPF15CS w/ 50/50 seats w/ Electric Motor Actuator 120v
½"MPF15CS-ELO-NA4K0	½"MPF15CS-ELO-NA4K0
¾"MPF15CS-ELO-NA4K0	¾"MPF15CS-ELO-NR6K0
1"MPF15CS-ELO-NA4K0	1"MPF15CS-ELO-NA8K0
1 ½"MPF15CS-ELO-NA8K0	1 ½"MPF15CS-ELO-NA8K0
2"MPF15CS-ELO-NA8K0	2"MPF15CS-ELO-NB9K0
2 ½"MPF15CS-ELO-NA10K0	2 ½"MPF15CS-ELO-NA10K0
3"MPF15CS-ELO-NA10K0	3"MPF15CS-ELO-NA10K0
4"MPF15CS-ELO-NA10K0	4"MPF15CS-ELO-NC12K0
6"MPF15CS-ELO-NC12K0	6"MPF15CS-ELO-NE14K0
8"MPF15CS-ELO-NE14K0	8"MPF15CS-ELO-NF15K0
10"MPF15CS-ELO-NF15K0	10"MPF15CS-ELO-NA18K0
12" MPF15CS-ELO-NB17K0	12"MPF15CS-ELO-NA19K0

MPF30SS TRANS-FLO SERIES ELECTRIC MOTOR ACTUATOR

MPF30SS Series w/ TFM seats, Electric Motor Actuator 120v	MPF30SS w/ 50/50 seats w/ Electric Motor Actuator 120v
¾"MPF30SS-ELO-NA4K0	¾"MPF30SS-ELO-NR6K0
1"MPF30SS-ELO-NR6K0	1"MPF30SS-ELO-NA8K0
1 ½"MPF30SS-ELO-NA8K0	1 ½"MPF30SS-ELO-NB9K0
2"MPF30SS-ELO-NB9K0	2"MPF30SS-ELO-NA10K0
3"MPF30SS-ELO-NA10K0	3"MPF30SS-ELO-NB11K0
4"MPF30SS-ELO-NB11K0	4"MPF30SS-ELO-NC12K0
6"MPF30SS-ELO-ND13K0	6"MPF30SS-ELO-NE14K0
8"MPF30SS-ELO-NE14K0	8"MPF30SS-ELO-NF15K0

MPF30CS TRANS-FLO SERIES ELECTRIC MOTOR ACTUATOR

MPF30CS w/ TFM seats, Electric Motor Actuator 120v	MPF30CS w/ 50/50 seats w/ Electric Motor Actuator 120v
¼"MPF30CS-ELO-NA4K0	¼"MPF30CS-ELO-NR6K0
1"MPF30CS-ELO-NR6K0	1"MPF30CS-ELO-NA8K0
1½"MPF30CS-ELO-NA8K0	1½"MPF30CS-ELO-NB9K0
2"MPF30CS-ELO-NB9K0	2"MPF30CS-ELO-NA10K0
3"MPF30CS-ELO-NA10K0	3"MPF30CS-ELO-NB11K0
4"MPF30CS-ELO-NB11K0	4"MPF30CS-ELO-NC12K0
6"MPF30CS-ELO-ND13K0	6"MPF30CS-ELO-NE14K0
8"MPF30CS-ELO-NE14K0	8"MPF30CS-ELO-NA15K0

MPF100 (THREADED) L-PORT 3-WAY MULTI-PORT SERIES WITH ELECTRIC MOTOR ACTUATORS

MPT100SS w/ TFM seats, Electric Motor Actuator 120v	MPT100SS w/ 50/50 seats w/ Electric Motor Actuator 120v
¼"MPT100SS-ELO-NA4K0	¼"MPT100SS-ELO-NA4K0
3/8"MPT100SS-ELO-NA4K0	3/8"MPT100SS-ELO-NA4K0
½"MPT100SS-ELO-NA4K0	½"MPT100SS-ELO-NA4K0
¾"MPT100SS-ELO-NA4K0	¾"MPT100SS-ELO-NA4K0
1"MPT100SS-ELO-NA4K0	1"MPT100SS-ELO-NR6K0
1¼"MPT100SS-ELO-NR6K0	1¼"MPT100SS-ELO-NA8K0
1½"MPT100SS-ELO-NA8K0	1½"MPT100SS-ELO-NB9K0
2"MPT100SS-ELO-NB9K0	2"MPT100SS-ELO-NB9K0

3 Piece Valves - Tri-Pro Series

HPF51SS 3PC TRI-PRO SERIES (NPT) WITH ELECTRIC MOTOR ACTUATORS ON/OFF SERVICE

HPF51SS Series w/ TFM seats, Electric Motor Actuator 120v	HPF51SS Series w/ 50/50Seat Electric Motor Actuator 120v
¼"HPF51SS-ELO-NA4K0	¼"HPF51SS-ELO-NA4K0
3/8" HPF51SS-ELO-NA4K0	3/8" HPF51SS-ELO-NA4K0
½"HPF51SS-ELO-NA4K0	½"HPF51SS-ELO-NA4K0
¾"HPF51SS-ELO-NA4K0	¾"HPF51SS-ELO-NA4K0
1"HPF51SS-ELO-NA4K0	1"HPF51SS-ELO-NA4K0
1¼"HPF51SS-ELO-NR6K0	1¼"HPF51SS-ELO-NA8K0
1½"HPF51SS-ELO-NR6K0	1½"HPF51SS-ELO-NA8K0
2"HPF51SS-ELO-NA8K0	2"HPF51SS-ELO-NB9K0
2½"HPF51SS-ELO-NB9K0	2½"HPF51SS-ELO-NA10K0
3"HPF51SS-ELO-NB9K0	3"HPF51SS-ELO-NA10K0
4"HPF51SS-ELO-NA10K0	4"HPF51SS-ELO-NA10K0

HPF52SS 3PC SOCKET WELD VALVES WITH ELECTRIC MOTOR ACTUATORS

HPF52SS Series w/ TFM seats, Electric Motor Actuator 120v	HPF52SS Series w/ 50/50 Seat Electric Motor Actuator 120v
¼"HPF52SS-ELO-NA4K0	¼"HPF52SS-ELO-NA4K0
3/8" HPF52SS-ELO-NA4K0	3/8" HPF52SS-ELO-NA4K0
½"HPF52SS-ELO-NA4K0	½"HPF52SS-ELO-NA4K0
¾"HPF52SS-ELO-NA4K0	¾"HPF52SS-ELO-NA4K0
1"HPF52SS-ELO-NA4K0	1"HPF52SS-ELO-NA4K0
1¼"HPF52SS-ELO-NR6K0	1¼"HPF52SS-ELO-NA8K0
1½"HPF52SS-ELO-NR6K0	1½"HPF52SS-ELO-NA8K0
2"HPF52SS-ELO-NA8K0	2"HPF52SS-ELO-NB9K0
2½"HPF52SS-ELO-NB9K0	2½"HPF52SS-ELO-NA10K0
3"HPF52SS-ELO-NB9K0	3"HPF52SS-ELO-NA10K0
4"HPF52SS-ELO-NA10K0	4"HPF52SS-ELO-NA10K0

HPF41CS NAT WITH ELECTRIC MOTOR ACTUATORS

HPF41CS Series w/TFM seats, Electric Motor Actuator 120v	HPF41CS Series w/50/50Seat Electric Motor Actuator 120v
½"HPF41CS-ELO-NA4K0	½"HPF41CS-ELO-NA4K0
3/8" HPF41CS-ELO-NA4K0	3/8" HPF41CS-ELO-NA4K0
½"HPF41CS-ELO-NA4K0	½"HPF41CS-ELO-NA4K0
¾"HPF41CS-ELO-NA4K0	¾"HPF41CS-ELO-NA4K0
1"HPF41CS-ELO-NA4K0	1"HPF41CS-ELO-NA4K0
1¼"HPF41CS-ELO-NR6K0	1¼"HPF41CS-ELO-NA8K0
1½"HPF41CS-ELO-NR6K0	1½"HPF41CS-ELO-NA8K0
2"HPF41CS-ELO-NA8K0	2"HPF41CS-ELO-NB9K0
2½"HPF41CS-ELO-NB9K0	2½"HPF41CS-ELO-NA10K0
3"HPF41CS-ELO-NB9K0	3"HPF41CS-ELO-NA10K0
4"HPF41CS-ELO-NA10K0	4"HPF41CS-ELO-NA10K0

HPF42CS SOCKET WELD WITH ELECTRIC MOTOR ACTUATORS

HPF42CS Series w/TFM seats, Electric Motor Actuator 120v	HPF42CS Series w/50/50 Seat Electric Motor Actuator 120v
½"HPF42CS-ELO-NA4K0	½"HPF42CS-ELO-NA4K0
3/8" HPF42CS-ELO-NA4K0	3/8" HPF42CS-ELO-NA4K0
½"HPF42CS-ELO-NA4K0	½"HPF42CS-ELO-NA4K0
¾"HPF42CS-ELO-NA4K0	¾"HPF42CS-ELO-NA4K0
1"HPF42CS-ELO-NA4K0	1"HPF42CS-ELO-NA4K0
1¼"HPF42CS-ELO-NR6K0	1¼"HPF42CS-ELO-NA8K0
1½"HPF42CS-ELO-NR6K0	1½"HPF42CS-ELO-NA8K0
2"HPF42CS-ELO-NA8K0	2"HPF42CS-ELO-NB9K0
2½"HPF42CS-ELO-NB9K0	2½"HPF42CS-ELO-NA10K0
3"HPF42CS-ELO-NB9K0	3"HPF42CS-ELO-NA10K0
4"HPF42CS-ELO-NA10K0	4"HPF42CS-ELO-NA10K0

HPF56SS 600# FLANGED END WITH ELECTRIC MOTOR ACTUATORS

HPF56SS Series w/TFM seats, Electric Motor Actuator 120v	HPF56SS Series w/50/50 Seat Electric Motor Actuator 120v
½"HPF56SS-ELO-NA4K0	½"HPF56SS-ELO-NA4K0
¾"HPF56SS-ELO-NA4K0	¾"HPF56SS-ELO-NA4K0
1"HPF56SS-ELO-NA4K0	1"HPF56SS-ELO-NA4K0
1¼"HPF56SS-ELO-NA4K0	1¼"HPF56SS-ELO-NA4K0
1½"HPF56SS-ELO-NR6K0	1½"HPF56SS-ELO-NA8K0
2"HPF56SS-ELO-NR6K0	2"HPF56SS-ELO-NA8K0
2½"HPF56SS-ELO-NA8K0	2½"HPF56SS-ELO-NA10K0
3"HPF56SS-ELO-NB9K0	3"HPF56SS-ELO-NA10K0
4"HPF56SS-ELO-NA10K0	4"HPF56SS-ELO-NA10K0

HPF46CS 600# FLANGED END WITH ELECTRIC MOTOR ACTUATORS

HPF46CS Series w/TFM seats, Electric Motor Actuator 120v	HPF46CS Series w/50/50 Seat Electric Motor Actuator 120v
½"HPF46CS-ELO-NA4K0	½"HPF46CS-ELO-NA4K0
¾"HPF46CS-ELO-NA4K0	¾"HPF46CS-ELO-NA4K0
1"HPF46CS-ELO-NA4K0	1"HPF46CS-ELO-NA4K0
1¼"HPF46CS-ELO-NA4K0	1¼"HPF46CS-ELO-NA4K0
1½"HPF46CS-ELO-NR6K0	1½"HPF46CS-ELO-NA8K0
2"HPF46CS-ELO-NR6K0	2"HPF46CS-ELO-NA8K0
2½"HPF46CS-ELO-NA8K0	2½"HPF46CS-ELO-NA10K0
3"HPF46CS-ELO-NB9K0	3"HPF46CS-ELO-NA10K0
4"HPF46CS-ELO-NA10K0	4"HPF46CS-ELO-NA10K0

3PC 300SS MULTI-CHOICE WITH ELECTRIC MOTOR ACTUATORS

300SS Series w/TFM seats, Electric Motor Actuator 120v	300SS Series w/ 50/50 Electric Motor Actuator 120v
1/4"300SS-ELO-NA4K0	1/4"300SS-ELO-NA4K0
3/8"300SS-ELO-NA4K0	3/8"300SS-ELO-NA4K0
1/2"300SS-ELO-NA4K0	1/2"300SS-ELO-NA4K0
3/4"300SS-ELO-NA4K0	3/4"300SS-ELO-NA4K0
1"300SS-ELO-NA4K0	1"300SS-ELO-NA4K0
1 1/4"300SS-ELO-NA4K0	1 1/4"300SS-ELO-NA4K0
1 1/2"300SS-ELO-NA4K0	1 1/2"300SS-ELO-NR6K0
2"300SS-ELO-NR6K0	2"300SS-ELO-NA8K0
2 1/2"300SS-ELO-NA8K0	2 1/2"300SS-ELO-NA8K0
3"300SS-ELO-NA8K0	3"300SS-ELO-NB9K0
4"300SS-ELO-NA10K0	4"300SS-ELO-NA10K0

3PC 200CS MULTI-CHOICE SERIES WITH ELECTRIC MOTOR ACTUATORS

200CS Series w/ TFM seats, Electric Motor Actuator 120v	200CS Series w/ 50/50 Electric Motor Actuator 120v
1/4"200CS-ELO-NA4K0	1/4"200CS-ELO-NA4K0
3/8"200CS-ELO-NA4K0	3/8"200CS-ELO-NA4K0
1/2"200CS-ELO-NA4K0	1/2"200CS-ELO-NA4K0
3/4"200CS-ELO-NA4K0	3/4"200CS-ELO-NA4K0
1"200CS-ELO-NA4K0	1"200CS-ELO-NA4K0
1 1/4"200CS-ELO-NA4K0	1 1/4"200CS-ELO-NA4K0
1 1/2"200CS-ELO-NA4K0	1 1/2"200CS-ELO-NR6K0
2"200CS-ELO-NR6K0	2"200CS-ELO-NA8K0
2 1/2"200CS-ELO-NA8K0	2 1/2"200CS-ELO-NA8K0
3"200CS-ELO-NA8K0	3"200CS-ELO-NB9K0
4"200CS-ELO-NA10K0	4"200CS-ELO-NA10K0

3PC 325/335SS WELD-IN-PLACE SL WITH ELECTRIC MOTOR ACTUATORS

325/335SL w/ TFM seats, Electric Motor Actuator 120v	S325/335SL Series w/ 50/50 Electric Motor Actuator 120v
1/4"325/335SL-ELO-NA4K0	1/4" 325/335SL-ELO-NA4K0
3/8"325/335SL-ELO-NA4K0	3/8"325/335SL-ELO-NA4K0
1/2"325/335SL-ELO-NA4K0	1/2"325/335SL-ELO-NA4K0
3/4"325/335SL-ELO-NA4K0	3/4"325/335SL-ELO-NA4K0
1"325/335SL-ELO-NA4K0	1"325/335SL-ELO-NA4K0
1 1/4"325/335SL-ELO-NA4K0	1 1/4"325/335SL-ELO-NR6K0
1 1/2"325/335SL-ELO-NA4K0	1 1/2"325/335SL-ELO-NA8K0
2"325/335SL-ELO-NR6K0	2"325/335SL-ELO-NA8K0
2 1/2"325/335SL-ELO-NA8K0	2 1/2"325/335SL-ELO-NA8K0
3"325/335SL-ELO-NA8K0	3"325/335SL-ELO-NB9K0
4"325/335SL-ELO-NA10K0	4"325/335SL-ELO-NA10K0

225/235CS 3PC MULTI-CHOICE SERIES WELD-IN-PLACE DESIGN (EXTENDED SOCKET OR BUTT-WELD ENDS) WITH ELECTRIC MOTOR ACTUATORS

225/235CS w/ TFM seats, Electric Motor Actuator 120v	225/235CS Series w/ 50/50 Electric Motor Actuator 120v
1/4"225/235CS-ELO-NA4K0	1/4" 225/235CS-ELO-NA4K0
3/8"225/235CS-ELO-NA4K0	3/8"225/235CS-ELO-NA4K0
1/2"225/235CS-ELO-NA4K0	1/2"225/235CS-ELO-NA4K0
3/4"225/235CS-ELO-NA4K0	3/4"225/235CS-ELO-NA4K0
1"225/235CS-ELO-NA4K0	1"225/235CS-ELO-NA4K0
1 1/4"225/235CS-ELO-NA4K0	1 1/4"225/235CS-ELO-NR6K0
1 1/2"225/235CS-ELO-NA4K0	1 1/2"225/235CS-ELO-NA8K0
2"225/235CS-ELO-NR6K0	2"225/235CS-ELO-NA8K0
2 1/2"225/235CS-ELO-NA8K0	2 1/2"225/235CS-ELO-NA8K0
3"225/235CS-ELO-NA8K0	3"225/235CS-ELO-NB9K0
4"225/235CS-ELO-NA10K0	4"225/235CS-ELO-NA10K0

S350SL Series w/ TFM seats, Electric Motor Actuator 120v	S370SL Series w/ Electric Motor Actuator 120v
½"350SL-ELO-NA4K0	½"370SL-ELO-NA4K0
¾"350SL-ELO-NA4K0	¾"370SL-ELO-NA4K0
1"350SL-ELO-NA4K0	1"370SL-ELO-NA4K0
1½"350SL-ELO-NA4K0	1½"370SL-ELO-NA4K0
2"350SL-ELO-NR6K0	2"370SL-ELO-NR6K0
2½"350SL-ELO-NA8K0	2½"370SL-ELO-NA8K0
3"350SL-ELO-NB9K0	3"370SL-ELO-NB9K0
4"350SL-ELO-NA10K0	4"370SL-ELO-NA10K0

S23SS/CS 1PC SEAL-WELD FUSION SERIES WITH ELECTRIC MOTOR ACTUATORS ON/OFF SERVICE

S23SS Series w/ Electric Motor Actuator 120v	S23CS Series w/ Electric Motor Actuator 120v
¼" S23SS-ELO-NA4K0	¼" S23CS-ELO-NA4K0
3/8" S23SS-ELO-NA4K0	3/8" S23CS-ELO-NA4K0
½" S23SS-ELO-NA4K0	½" S23SS-ELO-NA4K0
¾" S23SS-ELO-NA4K0	¾" S23SS-ELO-NA4K0
1" S23SS-ELO-NA4K0	1" S23SS- ELO-NA4K0
1¼" S23SS- ELO-NA4K0	1¼" S23SS- ELO-NA4K0
1½" S23SS-ELO-NA8K0	1½" S23SS-ELO-NA8K0
2" S23SS-ELO-NA8K0	2" S23SS-ELO-NA8K0
2 1/2" S23SS-ELO-NA8K0	2½" S23SS-ELO-NA8K0
3" S23SS-ELO-NB9K0	3" S23SS-ELO-NB9K0
4" S23SS-ELO-NA10K0	4" S23SS-ELO-NA10K0

T23SS/CS 2PC FUSION SERIES WITH ELECTRIC MOTOR ACTUATORS ON/OFF SERVICE

T23SS Series w/ Electric Motor Actuator 120v	T23CS Series w/ Electric Motor Actuator 120v
¼" T23SS-ELO-NA4K0	¼" T23CS-ELO-NA4K0
3/8" T23SS-ELO-NA4K0	3/8" T23CS-ELO-NA4K0
½" T23SS-ELO-NA4K0	½" T23CS-ELO-NA4K0
¾" T23SS-ELO-NA4K0	¾" T23CS-ELO-NA4K0
1" T23SS-ELO-NA4K0	1" T23CS- ELO-NA4K0
1¼" T23SS- ELO-NA4K0	1¼" T23CS- ELO-NA4K0
1½" T23SS-ELO-NR6K0	1½" T23CS-ELO-NR6K0
2" T23SS-ELO-NR6K0	2" T23CS-ELO-NR6K0
2½" T23SS-ELO-NA8K0	2½" T23CS-ELO-NA8K0
3" T23SS-ELO-NB9K0	3" T23CS-ELO-NB9K0
4" T23SS-ELO-NA10K0	4" T23CS-ELO-NA10K0

Direct Mount Ball Valves

DM310SS OR DM320SS 3PC (THREADED OR SOCKET WELD) WITH ELECTRIC MOTOR ACTUATOR

DM310SS Series w/ Electric Motor Actuator 120v	DM320SS Series w/Electric Motor Actuator 120v
½"DM310SS-ELO-NA4K0	½"DM320CS-ELO-NA4K0
¾"DM310SS-ELO-NA4K0	¾"DM320CS-ELO-NA4K0
1"DM310SS-ELO-NA4K0	1"DM320CS-ELO-NA4K0
1½"DM310SS-ELO-NR6K0	1½"DM320CS-ELO-NR6KA
2"DM310SS-ELO-NA8K0	2"DM320CS-ELO-NA8K0

DM85SS THREADED ENDS WITH ELECTRIC MOTOR ACTUATOR

DM85SS Series w/ Electric Motor Actuator 120v	DMF15SS Series w/ Electric Motor Actuator 120v
½"DM85SS-ELO-NA4K0	½" DMF15SS-ELO-NA4K0
¾"DM85SS-ELO-NA4K0	¾" DMF15SS-ELO-NA4K0
1"DM85SS-ELO-NA4K0	1" DMF15SS-ELO-NA4K0
1½"DM85SS-ELO-NR6K0	1½" DMF15SS-ELO-NA4K0
2"DM85SS-ELO-NA8K0	2" DMF15SS-ELO-NA4K0



Direct Mount Ball Valves

DM51BZ OR DM52BZ BRASS 2PC DIRECT MOUNT AUTOMATION SERIES W/ ELECTRIC MOTOR ACTUATORS ON/OFF SERVICE

DM51BZ Series w/ Electric Motor Actuator 120v	DM52BZ (316SS Ball & Steam) Series w/ Electric Motor Actuator 120v.
1/4"DM51BZ-ELO-NA4K0	1/4"DM52BZ-ELO-NA4K0
3/8"DM51BZ-ELO-NA4K0	3/8"DM52BZ-ELO-NA4K0
1/2"DM51BZ-ELO-NA4K0	1/2"DM52BZ-ELO-NA4K0
3/4"DM51BZ-ELO-NA4K0	3/4"DM52BZ-ELO-NA4K0
1"DM51BZ-ELO-NA4K0	1"DM52BZ-ELO-NA4K0
1 1/4"DM51BZ-ELO-NA4K0	1 1/4"DM52BZ-ELO-NA4K0
1 1/2"DM51BZ-ELO-NA4K0	1 1/2"DM52BZ-ELO-NA4K0
2"DM51BZ-ELO-NA4K0	2"DM52BZ-ELO-NA4K0
2 1/2"DM51BZ-ELO-NA4K0	
3"DM51BZ-ELO-NA4K0	
4"DM51BZ-ELO-NA8K0	

ELECTRIC

User Friendly, Accurate, Quick & Easy - Automation sizing and price list for Flo-Tite Ball Valves. Differential pressure, seat material, media type and temperature will affect actuator sizing. Flo-Tite actuator selections are based on valves with standard seats and clean fluid only at ambient temperatures and rated system pressures not to exceed 800 PSI. All units are assembled and tested.



DM-MPT100S4 (THREADED) L OR T PORT 3 WAY MULTI PORT SERIES w/ ELECTRIC MOTOR ACTUATORS

DM-MPT100S4 w/ TFM seats, Electric Motor Actuator 120v	DM-MPT100S4 w/ TFM seats, Electric Motor Actuator 120v
1/2"DM-MPT100S4-ELO-NA4K0	1 1/2"DM-MPT100S4-ELO-NR6K0
3/4"DM-MPT100S4-ELO-NA4K0	2"DM-MPT100S4-ELO-NR6K0
1"DM-MPT100S4-ELO-NA4K0	2 1/2"DM-MPT100S4-ELO-NB9K0
1 1/4"DM-MPT100S4-ELO-NA4K0	3"DM-MPT100S4-ELO-NA10K0

MPT355BZ OR MPT365BZ 3-WAY BRASS MULTI PORT DIRECT MOUNT with ELECTRIC MOTOR

MPT355-BZ T-Port Series w/ Electric Motor Actuator 120v	MPT365-BZ L-Port Series w/ Electric Motor Actuator 120v
1/4" MPT355BZ-ELO-NA4K0	1/4" MPT365BZ-ELO-NA4K0
3/8" MPT355BZ-ELO-NA4K0	3/8" MPT365BZ-ELO-NA4K0
1/2" MPT355BZ-ELO-NA4K0	1/2" MPT365BZ-ELO-NA4K0
3/4" MPT355BZ-ELO-NA4K0	3/4" MPT365BZ-ELO-NA4K0
1" MPT355BZ-ELO-NA4K0	1" MPT365BZ-ELO-NA4K0
1 1/4" MPT355BZ-ELO-NA4K0	1 1/4" MPT365BZ-ELO-NA4K0
1 1/2" MPT355BZ-ELO-NA4K0	1 1/2" MPT365BZ-ELO-NA4K0
2" MPT355BZ-ELO-NR6K0	2" MPT365BZ-ELO-NR6K0
2 1/2" MPT355BZ-ELO-NA8K0	2 1/2" MPT365BZ-ELO-NA8K0
3" MPT355BZ-ELO-NA8K0	3" MPT365BZ-ELO-NA8K0

Besides Offering Automation Packages, For Your Convenience, We Also Offer Accessories Such as Solenoid Valves, Positioners, and Limit Switches.

ACTUATOR ACCESSORIES ADD TO LIST PRICE:

LIMIT SWITCHES

MODEL	NOTE
FMYB - 5120 NEMA 4	With Visual Indicator
AMYB - 5120 NEMA 7	With Visual Indicator
FFNB - 5120 NEMA 4	Without Visual Indicator
ALS COMPACT SERIES	NEMA - 4 / with Indicator
ALS-II (Standard Box)	NEMA - 4 / with Indicator

POSITIONERS

MODEL	TYPE
VP700-G	Pneumatic 3-15 psi
VE700-G	Electro Pneumatic 4-20 mA
VAC	Digital Positioner

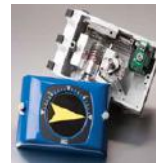
Custom Build Your Automation Package

Consult Factory for all U Ports and Other Specialty Ball Valves.

Easy-Link

Precision Engineered Actuator Mounting Brackets

12 Design Built
Ten Different Options Meet Most All Valves
With ISO 5211 Mounting Bolt Circle 304 Stainless Steel or
Chrome Plated Carbon Steel

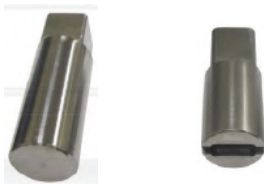


Easy - Link

Custom Designed Actuator Drive Couplers (from 9 to 46 mm)



Actuator Drive Blank Coupler



ISO Square Encapsulated Design



ISO Square Open Slot

Easy - Link's Actuator Inserts Are

An Easy Way to Mount Valves to Actuators

Butterfly Valve Spacer Plates



ISO Square Adapters

Model SQ





The Worlds Largest Selection of Quarter-Turn Valve Actuator Accessories



Solenoid Valves



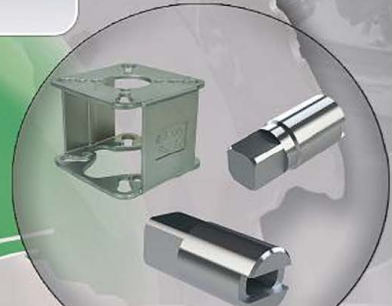
Limit Switches



**Indicators
and
Positioners**



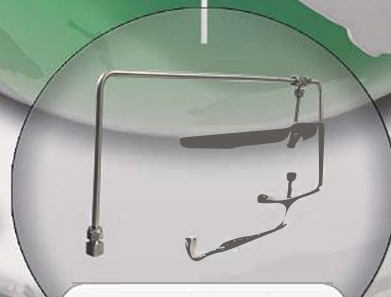
**Complete Actuator
Packages**



**Brackets
and
Couplers**



**Filter Regulators
and
Lubricators**



**Flexible and
Hard Stainless
Steel Hoses**



**Stem Extensions
and
Cryogenic Tops**

Air-Con's products are used in almost every energy related industry, including oil and gas production, oil and gas transmission, and petroleum refining.

Other markets include chemical, petrochemical, pulp and paper, food and beverage, and water systems.



4815 West 5th Street
Lumberton NC 28358

www.flotite.com

Office: 910.738.8904
Fax: 910.738.9112
sales@flotite.com