



Actuator Selection Guide

AirCon C Series

**Pneumatic rack & pinion
Rotary actuators
Spring return & double acting
Travel stop adjustments 5%
Optional travel stop for 100%**

TB 1554



**Sizes Ranging from 55 in-lbs to
28500 in-lbs Standard**

TB 155A



Series XB

Extended Range Series

**AirCon heavy duty rack and
seven pinion actuators offer
a broad range of torques
up to 1,565,800 inch lbs**

AirMax Cylinder Type

**Dependable high-cycle operation
The AirMax Actuator is the most
efficient pneumatic actuator available,
delivering precise reliable automation
for all types of control valves.**

TB 1552



TB 1556



Kompact 4 Series

**Space saving - fast acting four piston
design- increased number of pistons
allows for a smaller piston diameter,
allowing less air consumption to reduce
size while maintaining its high output torques.**

Automator Series

**Spring-Diaphragm Actuator
designed & developed specifically
for valves that require precise control
with low air supply.
Torque range; 133 to 12680 inch lbs**

TB 1553





INOX Series

**304 & 316 Stainless Steel
Pneumatic rack & pinion
Actuators suitable for highly
corrosive environments.**



TB 1558



TB 152



PRO-torq
electric actuators

Pro-Torque Series

**Electric actuators built for
Industrial process &
commercial applications.**

Torque Range : 90 - 177,000 inch lbs.

POWER STROKE

**The Power-Stroke Series is a heavy-duty product line of
pneumatic actuators ideal for operating a higher torque
ball, butterfly, or plug valves.**

**Our Scotch-Yoke design mechanism produces a torque curve
that closely matches requirements of valve actuation when
converting linear to rotary motion.**

**The Scotch-Yoke produces greater torque at the beginning and the
end of each stroke of the piston, precisely where it is required to
operate most valve types.**

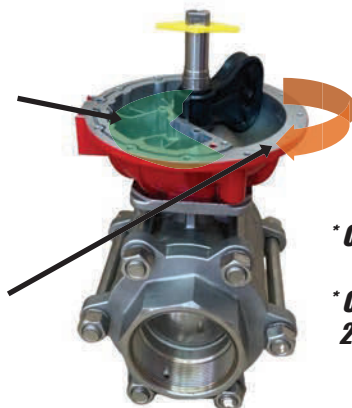
Scotch-Yoke Actuators



TB 1560



EZ Vane actuators are
significantly smaller,
lighter, faster, and more
cost efficient.



Torque Range:
30in-lbs to 57,854 in-lbs

Travel Stop Adjustment: +/- 5°

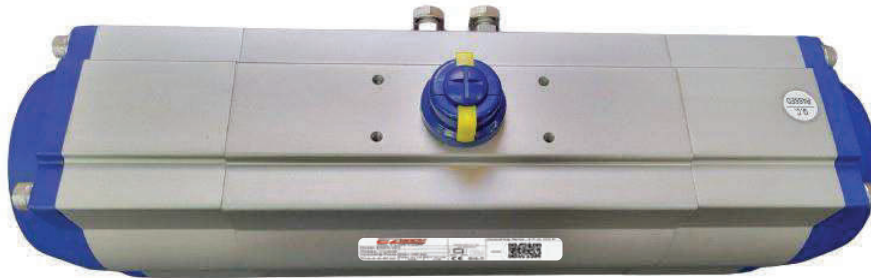
***Only one part to replace if ever needed**

***Change from Fail Open to Fail close in
2 minutes**

TB 1555

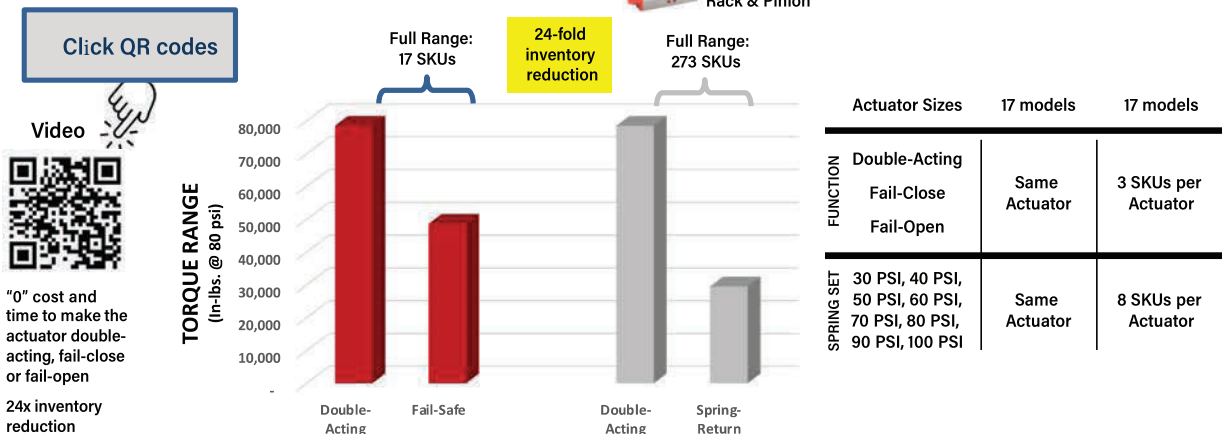
EZ RACK ACTUATOR

INTRODUCING THE WORLD'S ONLY Spring-Less Quarter Turn Pneumatic Valve Actuator LESS TIME, COST AND INVENTORY

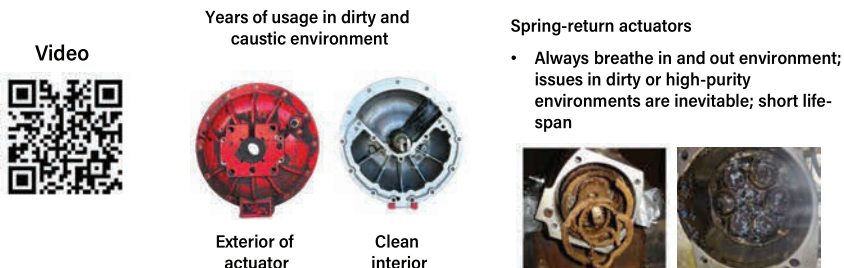


EZ RACK FEATURES AND BENEFITS

INVENTORY & WORKING CAPITAL EFFICIENCY



DIRTY OR HIGH-PURITY ENVIRONMENTS



EZ Vane Actuator's Unique Solutions and Benefits

The Easytork Control Actuator line is a game-changing development for the pneumatic actuation and control valve markets. It replaces the rotary spring & diaphragm style actuator's reason for existence. **Compared to RS&D, the EZ has better accuracy and is more economical, 1/10th to 1/4th the weight, 1/6th to 2/3rd the size, and consumes 1/4th to 1/2 the air consumption.**

Predictive Maintenance

Using internal air reservoir for fail-safe

Air reservoirs in fail-safe systems are commonly used to replace springs for large mission critical emergency shut down valves. Spring failure and its performance decay are common occurrences but are hard to detect. Unlike spring actuation, monitoring devices can be installed onto air reservoir fail-safe actuation systems to positively detect performance decay or failure.

Product Reliability

One moving piece – pure rotary-to-rotary movement

EVAs only have one moving part that creates pure rotary-to-rotary movement. Not only does the simplistic design contribute to better lifespan, the singular moving component simplifies predictive maintenance monitoring. Common off the shelf technology provides for validated automatic detection.

Product Reliability

Ideal for dirty environments & poor instrument air

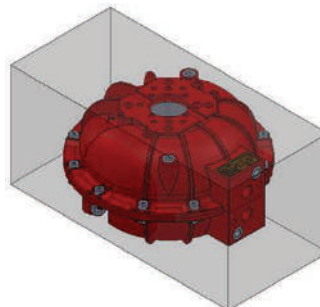
Environmental air never enters the actuator. Unlike springs, air reservoir fail-safe systems never pull in environmental air into actuators. While clean instrument air is important, Easytork's rugged vane handles poor air supply significantly better than traditional actuators.

Smaller & Lighter than any other actuator

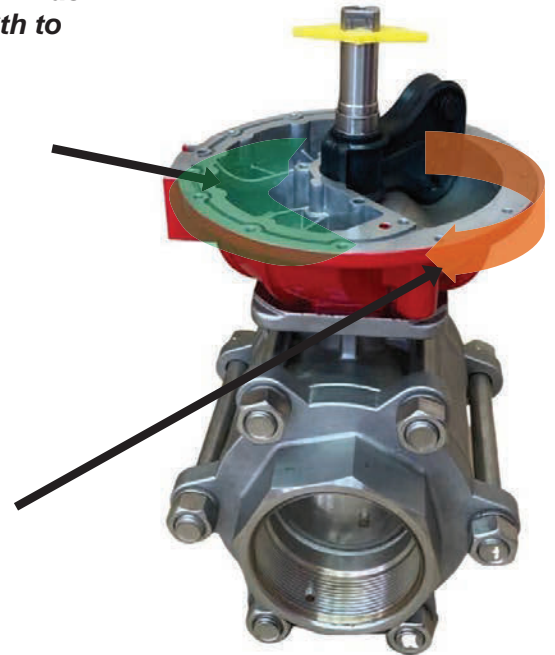
Smallest and lightest actuator on the market

Spring-return actuators are sized up to compensate for the resistance of the spring, while air reservoir fail-safe actuators do not have to account for spring resistance, as such EVA is the smallest and lightest actuator for any fail-safe application.

Rack & Pinion
(2 Piston)



Size overlay



EZ Vane actuators are significantly smaller, lighter, faster, and more cost efficient.



Weight Differential

12" butterfly valve
for fail-safe
49 lb (~22kg) EVA
or
120 lb (~54kg)
spring-return rack
& pinion

Email: sales@flotite.com
Main Tel.: 1-910-738-8904

www.flotite.com





ACTUATION ACCESSORIES

Air-Con SV Direct Mount Solenoids

Custom-designed pilot type valves for use with pneumatic actuators.

FEATURES:

- NAMUR Direct Mounting Rapid Response
- Nickel Infused Aluminum Body - Optional Stainless
- Wide Selection of Three & Four Way Types
- Voltage 12, 24, 120, 220 Available
- NEMA 4 & 7



Limit Switch

ALS Series

Low Cost Compact Design



ALS II Series

Conventional Size Box

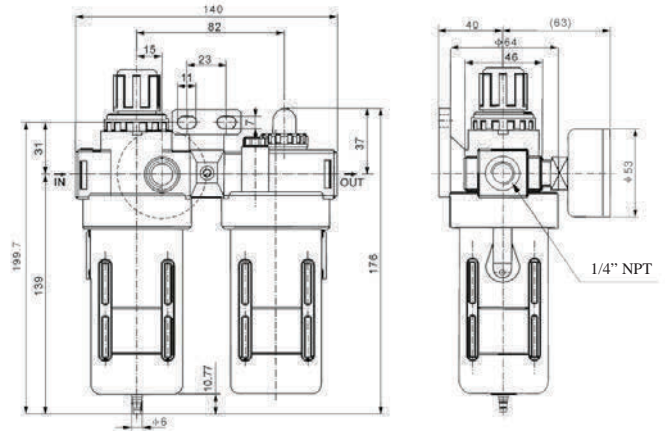
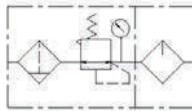


Corrosion Resistance • Nickel Infused Housing
Low Profile • Visual Indication

Filter Regulator & Lubricator (Air-Set)

Specification

Operating fluid	Air
Joint pipe bore	1/4" NPT
Filtering element micron	40
Range of adjustable pressure	7.25 - 123.28 psi
Max. adjustable pressure	137.8 psi
Ensured pressure resistance	217.5 psi
Operating temperature range	41 - 140 F
Capacity of filter cup	15 cc
Capacity of oil feed cup	25 cc
Suggested lube	ISO VG 32 or equal
Weight	1.1 lbs
Body material	Aluminum
Container cup material	PE
Protective cup cover material	Iron



Filter regulator units are available in a wide variety of port sizes to meet a broad range of pneumatic air supply filtration, air regulation and compressed air lubrication applications. It includes two parts: filter/regulator and lubricator, but still has three functions: filtration, decompression, and lubricating.

ISO Square Adapters

Model SQ

Eazy - Link's Actuator Inserts are an easy way to mount valves to actuators.



Butterfly Valve Spacer Plates



Eazy-Link

Precision Engineered Actuator Mounting Brackets

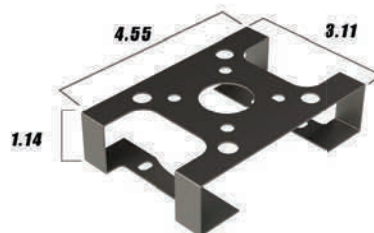
Features

- 12 design built
- Ten different options
- Fits most valves with ISO 5211 mounting bolt holes
- 304 stainless steel or chrome plated carbon steel

Limit Switch Bracket

Model LS5

Adjustable stainless steel NAMUR Limit Switch Brackets are designed to directly interface with NAMUR standards.



Easy - Link

Custom Designed Actuator Drive Couplers (from 9 to 46 mm)

Actuator Drive
Blank Coupler



ISO Square
Encapsulated Design



ISO Square
Open Slot



Indicator Series

Highly Visual Position Indicator
mounts to Pneumatic Actuators
with NAMUR standards



Offering a wide selection of options.

Indicators for 90° / Quarter-Turn Valves

Type (open/closed)	Code	Open	Closed
Black / Yellow	Y		
Full Green / Full Red	A		
Full Red / Full Green	B		
ANSI Red / White	R		
ANSI Green / White	G		
ANSI Blue / White	B		

Indicators for Multi-Port Valves (90°)

Type	Code	Position 1	Position 2	Views	Position 1	Position 2
3-way Path O	O			or		
3-way Path T Note: Four Viewing Configurations Possible	T			or		
3-way Path F Note: Four Viewing Configurations Possible	F			or		
4-way Path S	S			or		



Manual Worm Gear Operators



Speed Control Valve Silencer, Muffler, Bug Screen, Breather Vent

In-line
Speed
Controls



An adjustable needle valve provides metered air flow with the adjustable pressure reducing feature

Speed Controls
& Muffler
Combination



Silencer
Muffler



Bug Screen
Breather Vent



*Flexible Stainless
Steel Hose*

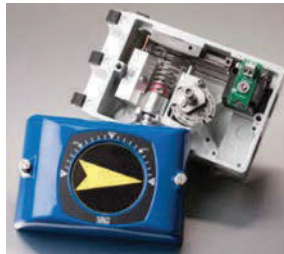


*Hard Stainless
Steel Pipe*



Positioners

Flo-Tite Series V200: This is our compact NEMA 4X "all-in-one housing" offered in a pneumatic or electro-pneumatic version. It provides a complete modular design utilizing a rugged, die cast aluminum housing. It is easy to calibrate and both the Zero and Span can be adjusted without removing the cover. This unit provides many options, such as a standard I/P, IS, EX, and others. It also offers a position feedback option in the all-in-one modular housing.



Flo-Tite Series D400: Our microprocessor based, "intelligent" or "smart" positioner can easily be mounted to a vast offering of pneumatic actuators for accurate valve control. This unit is simple to mount and calibrate with its local push-button calibration and LCD onboard monitoring. With properly filtered air, the D400 can provide extremely accurate and trouble-free service for many years. It's available in Hart, Foundation Fieldbus, or Profibus Communications.



Flo-Tite, Inc.
4815 West 5th St.
Lumberton, NC 28358

P. O. Box 1293
Lumberton, NC 28359
Website: www.flotite.com

Tel: (910) 738-8904
Fax: (910) 738-9112
E-mail: sales@flotite.com

Due to continuous development & improvement of our product range, we reserve the right to alter the dimensions and technical data included in this brochure.